

## **BARX1 Antibody (monoclonal) (M05)**

Mouse monoclonal antibody raised against a full length recombinant BARX1.

Catalog # AT1271a

### **Specification**

---

#### **BARX1 Antibody (monoclonal) (M05) - Product Information**

Application	IF, WB, E
Primary Accession	<a href="#">O9HBU1</a>
Other Accession	<a href="#">BC009458</a>
Reactivity	Human
Host	mouse
Clonality	Monoclonal
Isotype	IgG1 Kappa
Calculated MW	27298

#### **BARX1 Antibody (monoclonal) (M05) - Additional Information**

**Gene ID** 56033

##### **Other Names**

Homeobox protein BarH-like 1, BARX1

##### **Target/Specificity**

BARX1 (AAH09458, 1 a.a. ~ 100 a.a) full-length recombinant protein with GST tag. MW of the GST tag alone is 26 KDa.

##### **Dilution**

WB ~ ~ 1:500 ~ 1000

##### **Format**

Clear, colorless solution in phosphate buffered saline, pH 7.2 .

##### **Storage**

Store at -20°C or lower. Aliquot to avoid repeated freezing and thawing.

##### **Precautions**

BARX1 Antibody (monoclonal) (M05) is for research use only and not for use in diagnostic or therapeutic procedures.

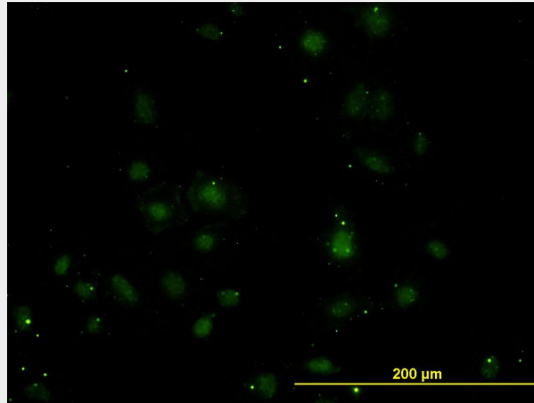
#### **BARX1 Antibody (monoclonal) (M05) - Protocols**

Provided below are standard protocols that you may find useful for product applications.

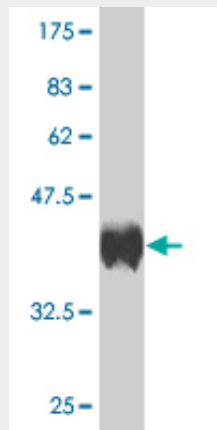
- [Western Blot](#)
- [Blocking Peptides](#)
- [Dot Blot](#)
- [Immunohistochemistry](#)

- [Immunofluorescence](#)
- [Immunoprecipitation](#)
- [Flow Cytometry](#)
- [Cell Culture](#)

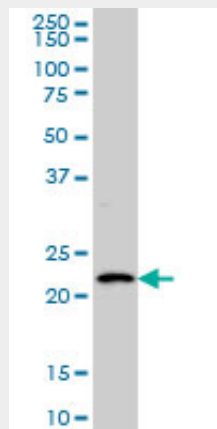
### BARX1 Antibody (monoclonal) (M05) - Images



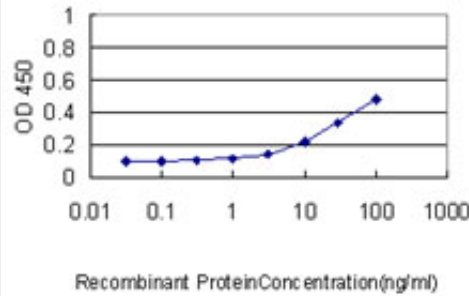
Immunofluorescence of monoclonal antibody to BARX1 on HeLa cell. [antibody concentration 10 ug/ml]



Antibody Reactive Against Recombinant Protein. Western Blot detection against Immunogen (36.74 KDa) .



BARX1 monoclonal antibody (M05), clone 3C11 Western Blot analysis of BARX1 expression in HeLa S3 NE ( (Cat # AT1271a )



Detection limit for recombinant GST tagged BARX1 is approximately 0.3ng/ml as a capture antibody.

### **BARX1 Antibody (monoclonal) (M05) - Background**

This gene encodes a member of the Bar subclass of homeobox transcription factors. Studies of the mouse and chick homolog suggest the encoded protein may play a role in developing teeth and craniofacial mesenchyme of neural crest origin. The protein may also be associated with differentiation of stomach epithelia.

### **BARX1 Antibody (monoclonal) (M05) - References**

Maternal genes and facial clefts in offspring: a comprehensive search for genetic associations in two population-based cleft studies from Scandinavia. Jugessur A, et al. PLoS One, 2010 Jul 9. PMID 20634891. Candidate gene/loci studies in cleft lip/palate and dental anomalies finds novel susceptibility genes for clefts. Vieira AR, et al. Genet Med, 2008 Sep. PMID 18978678. Barx1, growth factors and apoptosis in facial tissue of children with clefts. Krivicka-Uzkurele B, et al. Stomatologija, 2008. PMID 18708738. Absence of PITX2, BARX1, and FOXC1 mutations in De Hauwere syndrome (Axenfeld-Rieger anomaly, hydrocephaly, hearing loss): a 25-year follow up. Lowry RB, et al. Am J Med Genet A, 2007 Jun 1. PMID 17486624. Generation and initial analysis of more than 15,000 full-length human and mouse cDNA sequences. Strausberg RL, et al. Proc Natl Acad Sci U S A, 2002 Dec 24. PMID 12477932.