

**B2M Antibody (monoclonal) (M01)**

Mouse monoclonal antibody raised against a full length recombinant B2M.

Catalog # AT1251a

**Specification**

---

**B2M Antibody (monoclonal) (M01) - Product Information**

Application	IF, WB, IHC, E
Primary Accession	<a href="#">P61769</a>
Other Accession	<a href="#">BC032589</a>
Reactivity	Human
Host	mouse
Clonality	Monoclonal
Isotype	IgG2b kappa
Calculated MW	13715

**B2M Antibody (monoclonal) (M01) - Additional Information****Gene ID** 567**Other Names**

Beta-2-microglobulin, Beta-2-microglobulin form pI 53, B2M

**Target/Specificity**

B2M (AAH32589, 1 a.a. ~ 119 a.a) full-length recombinant protein with GST tag. MW of the GST tag alone is 26 KDa.

**Dilution**

WB~~1:500~1000

**Format**

Clear, colorless solution in phosphate buffered saline, pH 7.2 .

**Storage**

Store at -20°C or lower. Aliquot to avoid repeated freezing and thawing.

**Precautions**

B2M Antibody (monoclonal) (M01) is for research use only and not for use in diagnostic or therapeutic procedures.

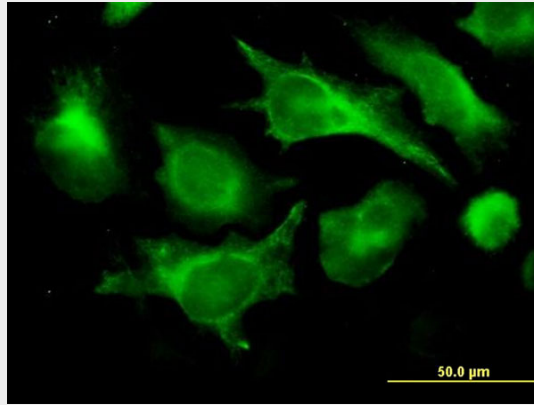
**B2M Antibody (monoclonal) (M01) - Protocols**

Provided below are standard protocols that you may find useful for product applications.

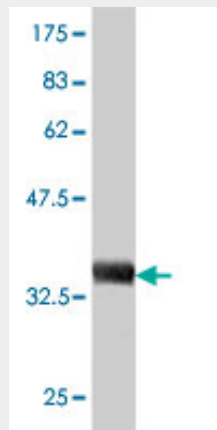
- [Western Blot](#)
- [Blocking Peptides](#)
- [Dot Blot](#)
- [Immunohistochemistry](#)

- [Immunofluorescence](#)
- [Immunoprecipitation](#)
- [Flow Cytometry](#)
- [Cell Culture](#)

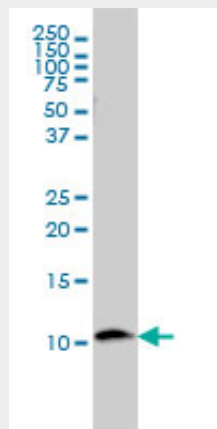
### B2M Antibody (monoclonal) (M01) - Images



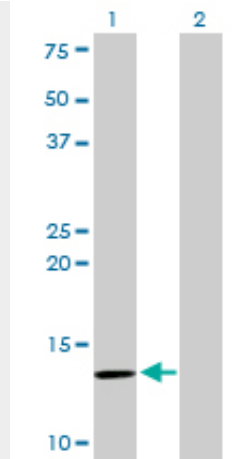
Immunofluorescence of monoclonal antibody to B2M on HeLa cell. [antibody concentration 10 ug/ml]



Antibody Reactive Against Recombinant Protein. Western Blot detection against Immunogen (38.83 KDa) .

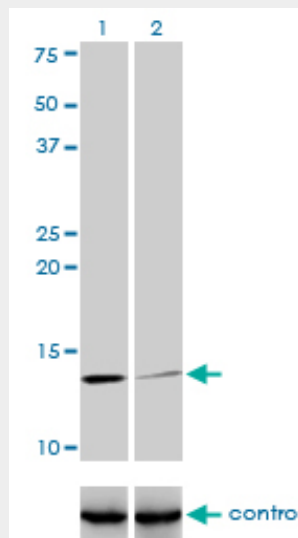


B2M monoclonal antibody (M01), clone 3F9-2C2 Western Blot analysis of B2M expression in U-2 OS ( (Cat # AT1251a )

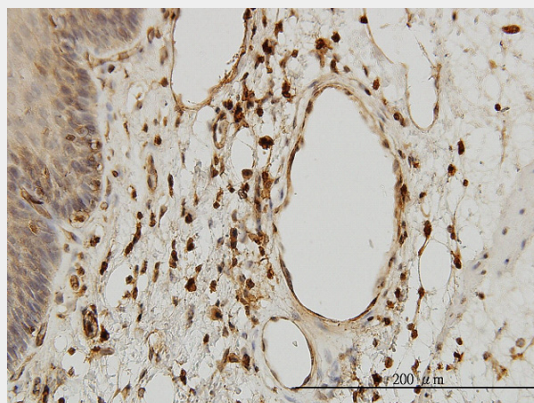


Western Blot analysis of B2M expression in transfected 293T cell line by B2M monoclonal antibody (M01), clone 3F9-2C2.

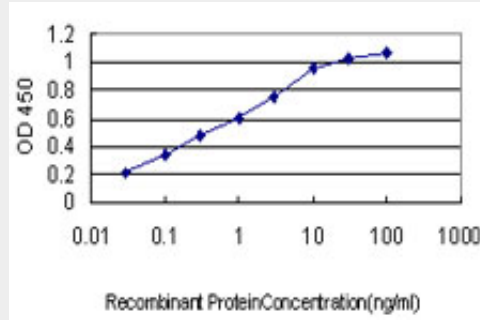
Lane 1: B2M transfected lysate(13.7 KDa).  
 Lane 2: Non-transfected lysate.



Western blot analysis of B2M over-expressed 293 cell line, cotransfected with B2M Validated Chimera RNAi ( (Cat # AT1251a )



Immunoperoxidase of monoclonal antibody to B2M on formalin-fixed paraffin-embedded human esophagus. [antibody concentration 3 ug/ml]



Detection limit for recombinant GST tagged B2M is approximately 0.03ng/ml as a capture antibody.

### **B2M Antibody (monoclonal) (M01) - Background**

This gene encodes a serum protein found in association with the major histocompatibility complex (MHC) class I heavy chain on the surface of nearly all nucleated cells. The protein has a predominantly beta-pleated sheet structure that can form amyloid fibrils in some pathological conditions. A mutation in this gene has been shown to result in hypercatabolic hypoproteinemia.

### **B2M Antibody (monoclonal) (M01) - References**

1. MHC-I expression renders catecholaminergic neurons susceptible to T-cell-mediated degeneration. Cebrian C, Zucca FA, Mauri P, Steinbeck JA, Studer L, Scherzer CR, Kanter E, Budhu S, Mandelbaum J, Vonsattel JP, Zecca L, Loike JD, Sulzer D. *Nat Commun.* 2014 Apr 16;5:3633. doi: 10.1038/ncomms4633.