

ATP2A3 Antibody (monoclonal) (M01)

Mouse monoclonal antibody raised against a partial recombinant ATP2A3.

Catalog # AT1234a

Specification

ATP2A3 Antibody (monoclonal) (M01) - Product Information

Application	WB, IHC, E
Primary Accession	O93084
Other Accession	BC035729
Reactivity	Human
Host	mouse
Clonality	Monoclonal
Isotype	IgG2a Kappa
Calculated MW	109256

ATP2A3 Antibody (monoclonal) (M01) - Additional Information

Gene ID 489

Other Names

Sarcoplasmic/endoplasmic reticulum calcium ATPase 3, SERCA3, SR Ca(2+)-ATPase 3, Calcium pump 3, ATP2A3

Target/Specificity

ATP2A3 (AAH35729, 501 a.a. ~ 620 a.a) partial recombinant protein with GST tag. MW of the GST tag alone is 26 KDa.

Dilution

WB~~1:500~1000

Format

Clear, colorless solution in phosphate buffered saline, pH 7.2 .

Storage

Store at -20°C or lower. Aliquot to avoid repeated freezing and thawing.

Precautions

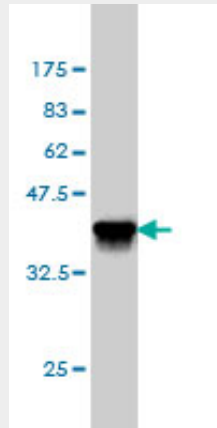
ATP2A3 Antibody (monoclonal) (M01) is for research use only and not for use in diagnostic or therapeutic procedures.

ATP2A3 Antibody (monoclonal) (M01) - Protocols

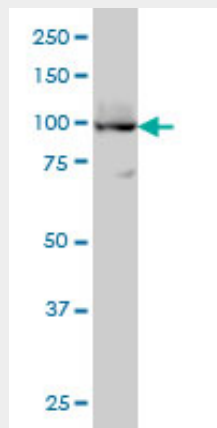
Provided below are standard protocols that you may find useful for product applications.

- [Western Blot](#)
- [Blocking Peptides](#)
- [Dot Blot](#)

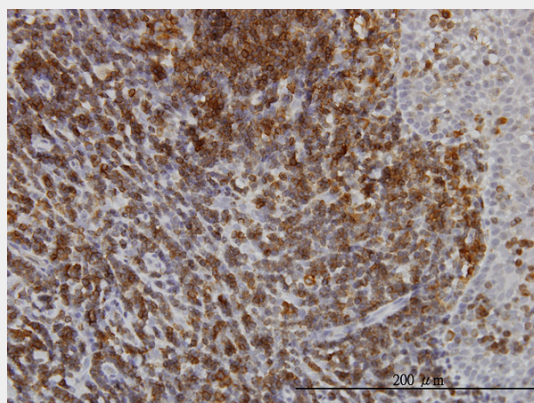
- [Immunohistochemistry](#)
- [Immunofluorescence](#)
- [Immunoprecipitation](#)
- [Flow Cytometry](#)
- [Cell Culture](#)

ATP2A3 Antibody (monoclonal) (M01) - Images

Antibody Reactive Against Recombinant Protein. Western Blot detection against Immunogen (38.94 KDa) .

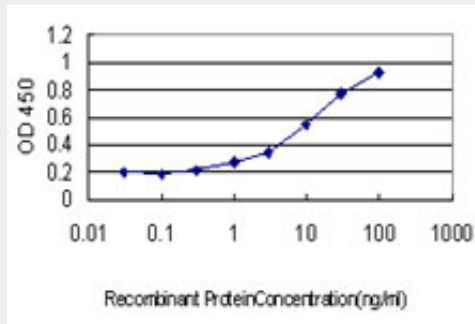


ATP2A3 monoclonal antibody (M01), clone 2H3 Western Blot analysis of ATP2A3 expression in HL-60 ((Cat # AT1234a)



Immunoperoxidase of monoclonal antibody to ATP2A3 on formalin-fixed paraffin-embedded

human tonsil. [antibody concentration 3 ug/ml]



Detection limit for recombinant GST tagged ATP2A3 is approximately 0.3ng/ml as a capture antibody.

ATP2A3 Antibody (monoclonal) (M01) - Background

This gene encodes one of the SERCA Ca²⁺-ATPases, which are intracellular pumps located in the sarcoplasmic or endoplasmic reticula of muscle cells. This enzyme catalyzes the hydrolysis of ATP coupled with the translocation of calcium from the cytosol to the sarcoplasmic reticulum lumen, and is involved in calcium sequestration associated with muscular excitation and contraction. Alternative splicing results in multiple transcript variants encoding different isoforms.

ATP2A3 Antibody (monoclonal) (M01) - References

1.Modulation of endoplasmic reticulum calcium pump expression during lung cancer cell differentiation.Arbabian A, Brouland JP, Apati A, Paszty K, Hegedus L, Enyedi A, Chomienne C, Papp B.FEBS J. 2012 Nov 15. doi: 10.1111/febs.12064.2.Expression of Sarco/Endoplasmic Reticulum Ca²⁺ATPase (SERCA) 3 proteins in two major conformational states in native human cell membranes.Corvazier E, Bredoux R, Kovacs T, Enouf J.Biochim Biophys Acta. 2009 Mar;1788(3):587-99. Epub 2008 Dec 16.