

ATP1B3 Antibody (monoclonal) (M03)

Mouse monoclonal antibody raised against a full length recombinant ATP1B3.

Catalog # AT1232a

Specification

ATP1B3 Antibody (monoclonal) (M03) - Product Information

Application	E
Primary Accession	P54709
Other Accession	BC011835
Reactivity	Human
Host	mouse
Clonality	Monoclonal
Isotype	IgG2a Kappa
Calculated MW	31513

ATP1B3 Antibody (monoclonal) (M03) - Additional Information

Gene ID 483

Other Names

Sodium/potassium-transporting ATPase subunit beta-3, Sodium/potassium-dependent ATPase subunit beta-3, ATPB-3, CD298, ATP1B3

Target/Specificity

ATP1B3 (AAH11835, 1 a.a. ~ 279 a.a) full-length recombinant protein with GST tag. MW of the GST tag alone is 26 KDa.

Format

Clear, colorless solution in phosphate buffered saline, pH 7.2 .

Storage

Store at -20°C or lower. Aliquot to avoid repeated freezing and thawing.

Precautions

ATP1B3 Antibody (monoclonal) (M03) is for research use only and not for use in diagnostic or therapeutic procedures.

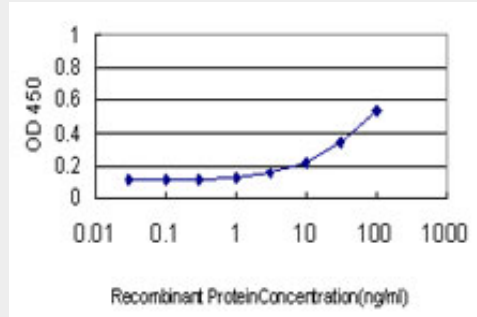
ATP1B3 Antibody (monoclonal) (M03) - Protocols

Provided below are standard protocols that you may find useful for product applications.

- [Western Blot](#)
- [Blocking Peptides](#)
- [Dot Blot](#)
- [Immunohistochemistry](#)
- [Immunofluorescence](#)
- [Immunoprecipitation](#)

- [Flow Cytometry](#)
- [Cell Culture](#)

ATP1B3 Antibody (monoclonal) (M03) - Images



Detection limit for recombinant GST tagged ATP1B3 is approximately 3ng/ml as a capture antibody.

ATP1B3 Antibody (monoclonal) (M03) - References

1. The importance of adequate fixation for immunofluorescent staining of bovine embryos. Goossens K, Vandaele L, Wydooghe E, Thys M, Dewulf J, Peelman Lj, Van Soom A. *Reprod Domest Anim.* 2011 Dec;46(6):1098-103. doi: 10.1111/j.1439-0531.2011.01770.x. Epub 2011 Mar 3.