

## **ASGR2 Antibody (monoclonal) (M05)**

Mouse monoclonal antibody raised against a full-length recombinant ASGR2.

Catalog # AT1213a

### **Specification**

---

#### **ASGR2 Antibody (monoclonal) (M05) - Product Information**

Application	<b>WB, E</b>
Primary Accession	<a href="#">P07307</a>
Other Accession	<a href="#">BC017251</a>
Reactivity	<b>Human</b>
Host	<b>Mouse</b>
Clonality	<b>Monoclonal</b>
Isotype	<b>IgG2a Kappa</b>
Calculated MW	<b>35092</b>

#### **ASGR2 Antibody (monoclonal) (M05) - Additional Information**

**Gene ID** 433

##### **Other Names**

Asialoglycoprotein receptor 2, ASGP-R 2, ASGPR 2, C-type lectin domain family 4 member H2, Hepatic lectin H2, HL-2, ASGR2, CLEC4H2

##### **Target/Specificity**

ASGR2 (AAH17251, 1 a.a. ~ 287 a.a) full-length recombinant protein with GST tag. MW of the GST tag alone is 26 KDa.

##### **Dilution**

WB~~1:500~1000

##### **Format**

Clear, colorless solution in phosphate buffered saline, pH 7.2 .

##### **Storage**

Store at -20°C or lower. Aliquot to avoid repeated freezing and thawing.

##### **Precautions**

ASGR2 Antibody (monoclonal) (M05) is for research use only and not for use in diagnostic or therapeutic procedures.

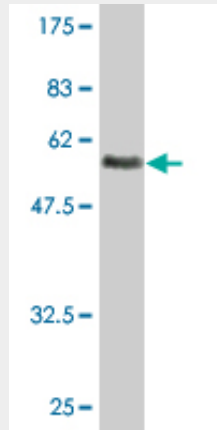
#### **ASGR2 Antibody (monoclonal) (M05) - Protocols**

Provided below are standard protocols that you may find useful for product applications.

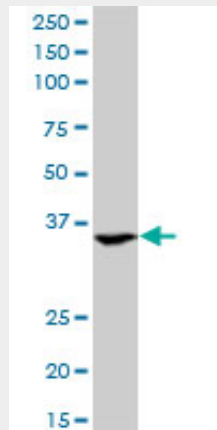
- [Western Blot](#)
- [Blocking Peptides](#)
- [Dot Blot](#)

- [Immunohistochemistry](#)
- [Immunofluorescence](#)
- [Immunoprecipitation](#)
- [Flow Cytometry](#)
- [Cell Culture](#)

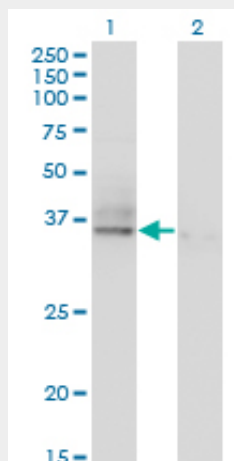
### ASGR2 Antibody (monoclonal) (M05) - Images



Antibody Reactive Against Recombinant Protein. Western Blot detection against Immunogen (57.31 KDa) .

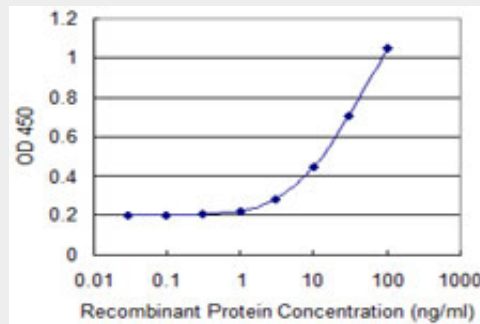


ASGR2 monoclonal antibody (M05), clone 1D7. Western Blot analysis of ASGR2 expression in K-562 ( (Cat # AT1213a )



Western Blot analysis of ASGR2 expression in transfected 293T cell line by ASGR2 monoclonal antibody (M05), clone 1D7.

Lane 1: ASGR2 transfected lysate (Predicted MW: 32.6 KDa).  
Lane 2: Non-transfected lysate.



Detection limit for recombinant GST tagged ASGR2 is 1 ng/ml as a capture antibody.

### **ASGR2 Antibody (monoclonal) (M05) - Background**

This cell surface receptor binds to galactose-terminated glycoproteins. It transports these glycoproteins via a series of membrane vesicles and tubules to an acidic-sorting organelle where the receptor and ligand dissociates. Then the receptor is recycled back to the cell surface. There are four alternatively spliced transcript variants of this gene.

### **ASGR2 Antibody (monoclonal) (M05) - References**

New genetic associations detected in a host response study to hepatitis B vaccine. Davila S, et al. *Genes Immun*, 2010 Apr. PMID 20237496. Role of sialic acid for platelet life span: exposure of beta-galactose results in the rapid clearance of platelets from the circulation by asialoglycoprotein receptor-expressing liver macrophages and hepatocytes. Sørensen AL, et al. *Blood*, 2009 Aug 20. PMID 19520807. Human plasma N-glycoproteome analysis by immunoaffinity subtraction, hydrazide chemistry, and mass spectrometry. Liu T, et al. *J Proteome Res*, 2005 Nov-Dec. PMID 16335952. The B domain of coagulation factor VIII interacts with the asialoglycoprotein receptor. Bovenschen N, et al. *J Thromb Haemost*, 2005 Jun. PMID 15946216. The status, quality, and expansion of the NIH full-length cDNA project: the Mammalian Gene Collection (MGC). Gerhard DS, et al. *Genome Res*, 2004 Oct. PMID 15489334.