

## **AMY1A Antibody (monoclonal) (M04)**

Mouse monoclonal antibody raised against a partial recombinant AMY1A.

Catalog # AT1135a

### **Specification**

---

#### **AMY1A Antibody (monoclonal) (M04) - Product Information**

Application	<b>WB, IHC</b>
Primary Accession	<a href="#">P04745</a>
Other Accession	<a href="#">NM_001008221</a>
Reactivity	<b>Human</b>
Host	<b>mouse</b>
Clonality	<b>Monoclonal</b>
Isotype	<b>IgG2a Kappa</b>

#### **AMY1A Antibody (monoclonal) (M04) - Additional Information**

##### **Other Names**

Alpha-amylase 1, 4-alpha-D-glucan glucohydrolase 1, Salivary alpha-amylase, AMY1A, AMY1

##### **Target/Specificity**

AMY1A (NP\_001008222, 172 a.a. ~ 245 a.a) partial recombinant protein with GST tag. MW of the GST tag alone is 26 KDa.

##### **Dilution**

WB~~1:500~1000

##### **Format**

Clear, colorless solution in phosphate buffered saline, pH 7.2 .

##### **Storage**

Store at -20°C or lower. Aliquot to avoid repeated freezing and thawing.

##### **Precautions**

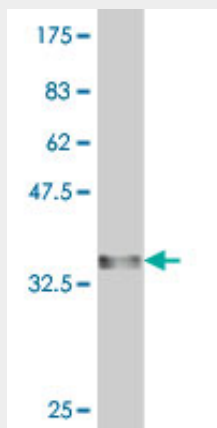
AMY1A Antibody (monoclonal) (M04) is for research use only and not for use in diagnostic or therapeutic procedures.

#### **AMY1A Antibody (monoclonal) (M04) - Protocols**

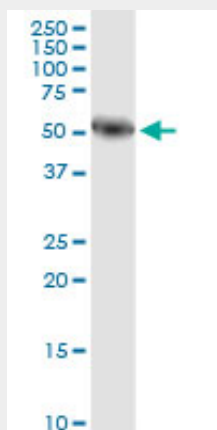
Provided below are standard protocols that you may find useful for product applications.

- [Western Blot](#)
- [Blocking Peptides](#)
- [Dot Blot](#)
- [Immunohistochemistry](#)
- [Immunofluorescence](#)
- [Immunoprecipitation](#)
- [Flow Cytometry](#)
- [Cell Culture](#)

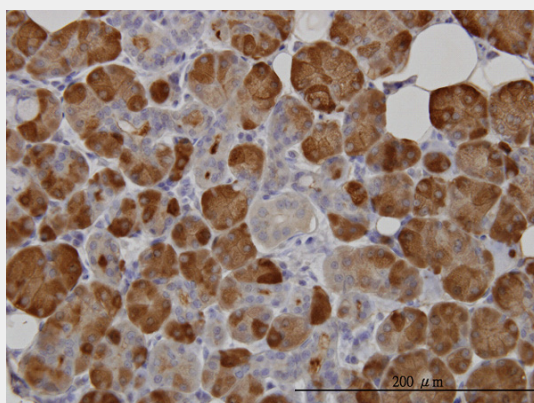
## AMY1A Antibody (monoclonal) (M04) - Images



Antibody Reactive Against Recombinant Protein. Western Blot detection against Immunogen (33.88 KDa) .



AMY1A monoclonal antibody (M04), clone 2D4. Western Blot analysis of AMY1A expression in human pancreas.



Immunoperoxidase of monoclonal antibody to AMY1A on formalin-fixed paraffin-embedded human salivary gland. [antibody concentration 3 ug/ml]

## AMY1A Antibody (monoclonal) (M04) - Background

Amylases are secreted proteins that hydrolyze 1,4-alpha-glucoside bonds in oligosaccharides and polysaccharides, and thus catalyze the first step in digestion of dietary starch and glycogen. The

human genome has a cluster of several amylase genes that are expressed at high levels in either salivary gland or pancreas. This gene encodes an amylase isoenzyme produced by the salivary gland. Alternative splicing results in multiple transcript variants encoding the same protein.

#### **AMY1A Antibody (monoclonal) (M04) - References**

Probing the role of aromatic residues at the secondary saccharide-binding sites of human salivary alpha-amylase in substrate hydrolysis and bacterial binding. Rangunath C, et al. J Mol Biol, 2008 Dec 31. PMID 18951906. Social evaluation-induced amylase elevation and economic decision-making in the dictator game in humans. Takahashi T, et al. Neuro Endocrinol Lett, 2007 Oct. PMID 17984929. Diet and the evolution of human amylase gene copy number variation. Perry GH, et al. Nat Genet, 2007 Oct. PMID 17828263. Interaction of salivary alpha-amylase and amylase-binding-protein A (AbpA) of *Streptococcus gordonii* with glucosyltransferase of *S. gordonii* and *Streptococcus mutans*. Chaudhuri B, et al. BMC Microbiol, 2007 Jun 25. PMID 17593303. Large-scale mapping of human protein-protein interactions by mass spectrometry. Ewing RM, et al. Mol Syst Biol, 2007. PMID 17353931.

#### **AMY1A Antibody (monoclonal) (M04) - Citations**

- [Identification and detection of protein markers to differentiate between forensically relevant body fluids.](#)