

## **AMPD2 Antibody (monoclonal) (M04)**

Mouse monoclonal antibody raised against a partial recombinant AMPD2.

Catalog # AT1134a

### **Specification**

---

#### **AMPD2 Antibody (monoclonal) (M04) - Product Information**

Application	WB
Primary Accession	<a href="#">O01433</a>
Other Accession	<a href="#">NM_139156</a>
Reactivity	Human
Host	mouse
Clonality	Monoclonal
Isotype	IgG2a Kappa
Calculated MW	94890

#### **AMPD2 Antibody (monoclonal) (M04) - Additional Information**

**Gene ID** 271

##### **Other Names**

AMP deaminase 2, AMP deaminase isoform L, AMPD2

##### **Target/Specificity**

AMPD2 (NP\_631895, 86 a.a. ~ 185 a.a) partial recombinant protein with GST tag. MW of the GST tag alone is 26 KDa.

##### **Dilution**

WB ~ ~ 1:500 ~ 1000

##### **Format**

Clear, colorless solution in phosphate buffered saline, pH 7.2 .

##### **Storage**

Store at -20°C or lower. Aliquot to avoid repeated freezing and thawing.

##### **Precautions**

AMPD2 Antibody (monoclonal) (M04) is for research use only and not for use in diagnostic or therapeutic procedures.

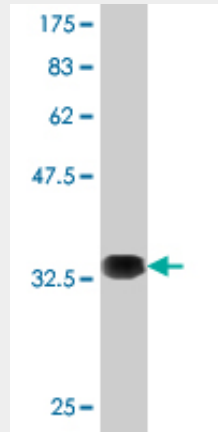
#### **AMPD2 Antibody (monoclonal) (M04) - Protocols**

Provided below are standard protocols that you may find useful for product applications.

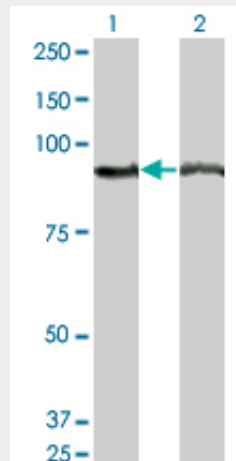
- [Western Blot](#)
- [Blocking Peptides](#)
- [Dot Blot](#)
- [Immunohistochemistry](#)

- [Immunofluorescence](#)
- [Immunoprecipitation](#)
- [Flow Cytometry](#)
- [Cell Culture](#)

### AMPD2 Antibody (monoclonal) (M04) - Images



Antibody Reactive Against Recombinant Protein. Western Blot detection against Immunogen (36.74 KDa) .



Western Blot analysis of AMPD2 expression in transfected 293T cell line by AMPD2 monoclonal antibody (M04), clone 2G8.

Lane 1: AMPD2 transfected lysate (92.1 KDa).  
Lane 2: Non-transfected lysate.

### AMPD2 Antibody (monoclonal) (M04) - Background

Adenosine monophosphate deaminase-2 (EC 3.5.4.6) catalyzes the deamination of AMP to IMP and plays an important role in the purine nucleotide cycle.

### AMPD2 Antibody (monoclonal) (M04) - References

Genome-wide association study of recurrent early-onset major depressive disorder. Shi J, et al. Mol Psychiatry, 2010 Feb 2. PMID 20125088. Integrative predictive model of coronary artery calcification in atherosclerosis. McGeachie M, et al. Circulation, 2009 Dec 15. PMID 19948975. Expression

patterns of AMP-deaminase isozymes in human hepatocellular carcinoma (HCC). Szydłowska M, et al. Mol Cell Biochem, 2008 Nov. PMID 18493842. Global, in vivo, and site-specific phosphorylation dynamics in signaling networks. Olsen JV, et al. Cell, 2006 Nov 3. PMID 17081983. A probability-based approach for high-throughput protein phosphorylation analysis and site localization. Beausoleil SA, et al. Nat Biotechnol, 2006 Oct. PMID 16964243.