

AMELX Antibody (monoclonal) (M03)

Mouse monoclonal antibody raised against a partial recombinant AMELX.

Catalog # AT1131a

Specification

AMELX Antibody (monoclonal) (M03) - Product Information

Application	WB, E
Primary Accession	O99217
Other Accession	NM_001142
Reactivity	Human
Host	mouse
Clonality	Monoclonal
Isotype	IgG2b Kappa
Calculated MW	21603

AMELX Antibody (monoclonal) (M03) - Additional Information

Gene ID 265

Other Names

Amelogenin, X isoform, AMELX, AMG, AMGX

Target/Specificity

AMELX (NP_001133, 93 a.a. ~ 191 a.a) partial recombinant protein with GST tag. MW of the GST tag alone is 26 KDa.

Dilution

WB ~ ~ 1:500 ~ 1000

Format

Clear, colorless solution in phosphate buffered saline, pH 7.2 .

Storage

Store at -20°C or lower. Aliquot to avoid repeated freezing and thawing.

Precautions

AMELX Antibody (monoclonal) (M03) is for research use only and not for use in diagnostic or therapeutic procedures.

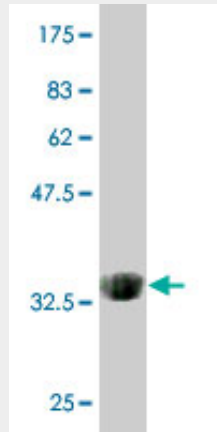
AMELX Antibody (monoclonal) (M03) - Protocols

Provided below are standard protocols that you may find useful for product applications.

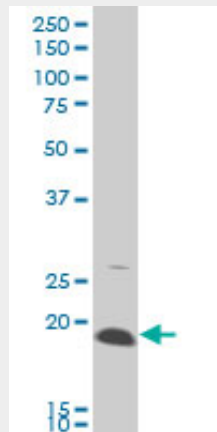
- [Western Blot](#)
- [Blocking Peptides](#)
- [Dot Blot](#)
- [Immunohistochemistry](#)

- [Immunofluorescence](#)
- [Immunoprecipitation](#)
- [Flow Cytometry](#)
- [Cell Culture](#)

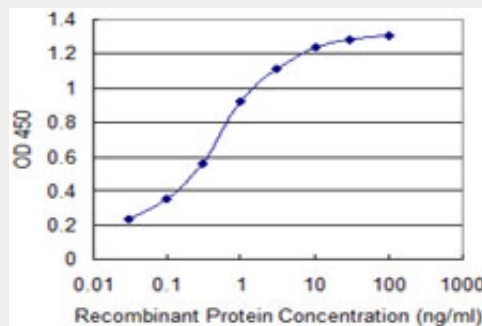
AMELX Antibody (monoclonal) (M03) - Images



Antibody Reactive Against Recombinant Protein. Western Blot detection against Immunogen (36.63 KDa) .



AMELX monoclonal antibody (M03), clone 3B5 Western Blot analysis of AMELX expression in A-431 ((Cat # AT1131a)



Detection limit for recombinant GST tagged AMELX is 0.03 ng/ml as a capture antibody.

AMELX Antibody (monoclonal) (M03) - Background

This gene encodes a member of the amelogenin family of extracellular matrix proteins.

Amelogenins are involved in biomineralization during tooth enamel development. Mutations in this gene cause X-linked amelogenesis imperfecta. Alternative splicing results in multiple transcript variants encoding different isoforms.

AMELX Antibody (monoclonal) (M03) - References

1.Expression of odontogenic ameloblast-associated protein, amelotin, ameloblastin, and amelogenin in odontogenic tumors: immunohistochemical analysis and pathogenetic considerations.Crivelini MM, Filipini RC, Miyahara GI, de Sousa SC.J Oral Pathol Med. 2011 Sep 21. doi: 10.1111/j.1600-0714.2011.01079.x.