

**AMBP Antibody (monoclonal) (M01)****Mouse monoclonal antibody raised against a full length recombinant AMBP.**

Catalog # AT1129a

**Specification**

---

**AMBP Antibody (monoclonal) (M01) - Product Information**

Application	IF, WB, IHC, E
Primary Accession	<a href="#">P02760</a>
Other Accession	<a href="#">BC041593</a>
Reactivity	Human
Host	Mouse
Clonality	Monoclonal
Isotype	IgG1 Kappa
Calculated MW	38999

**AMBP Antibody (monoclonal) (M01) - Additional Information**

Gene ID 259

**Other Names**

Protein AMBP, Alpha-1-microglobulin, Protein HC, Alpha-1 microglycoprotein, Complex-forming glycoprotein heterogeneous in charge, Inter-alpha-trypsin inhibitor light chain, ITI-LC, Bikunin, EDC1, HI-30, Uronic-acid-rich protein, Trypstatin, AMBP, HCP, ITIL

**Target/Specificity**

AMBP (AAH41593, 19 a.a. ~ 352 a.a) full-length recombinant protein with GST tag. MW of the GST tag alone is 26 KDa.

**Dilution**

WB~~1:500~1000

**Format**

Clear, colorless solution in phosphate buffered saline, pH 7.2 .

**Storage**

Store at -20°C or lower. Aliquot to avoid repeated freezing and thawing.

**Precautions**

AMBP Antibody (monoclonal) (M01) is for research use only and not for use in diagnostic or therapeutic procedures.

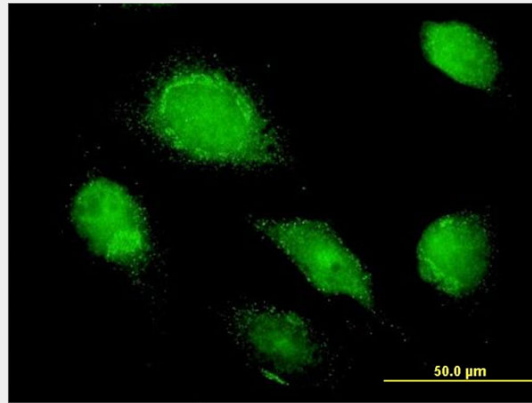
**AMBP Antibody (monoclonal) (M01) - Protocols**

Provided below are standard protocols that you may find useful for product applications.

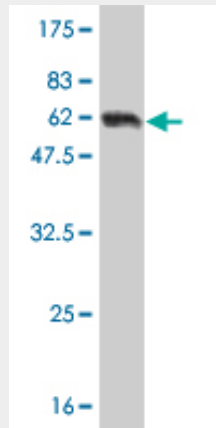
- [Western Blot](#)
- [Blocking Peptides](#)

- [Dot Blot](#)
- [Immunohistochemistry](#)
- [Immunofluorescence](#)
- [Immunoprecipitation](#)
- [Flow Cytometry](#)
- [Cell Culture](#)

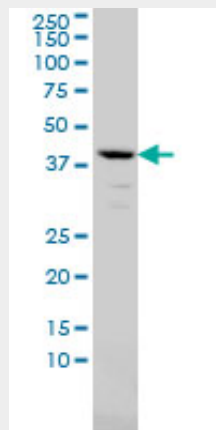
### AMBP Antibody (monoclonal) (M01) - Images



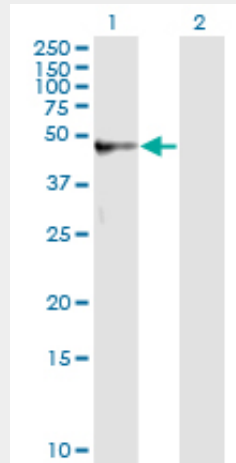
Immunofluorescence of monoclonal antibody to AMBP on HeLa cell. [antibody concentration 10 ug/ml]



Antibody Reactive Against Recombinant Protein. Western Blot detection against Immunogen (62.48 KDa) .

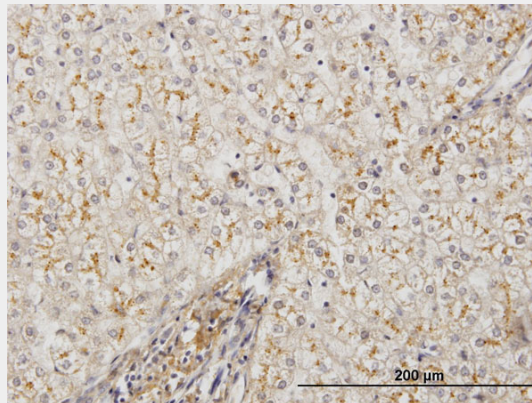


AMBP monoclonal antibody (M01), clone 3F1 Western Blot analysis of AMBP expression in A-549 (Cat # AT1129a )

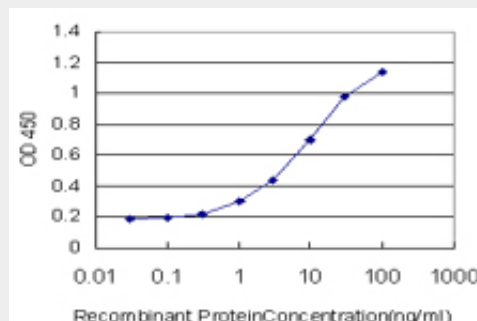


Western Blot analysis of AMBP expression in transfected 293T cell line by AMBP monoclonal antibody (M01), clone 3F1.

Lane 1: AMBP transfected lysate(39 KDa).  
 Lane 2: Non-transfected lysate.



Immunoperoxidase of monoclonal antibody to AMBP on formalin-fixed paraffin-embedded human liver. [antibody concentration 1 ug/ml]



Detection limit for recombinant GST tagged AMBP is approximately 1ng/ml as a capture antibody.

### AMBP Antibody (monoclonal) (M01) - Background

This gene encodes a complex glycoprotein secreted in plasma. The precursor is proteolytically processed into distinct functioning proteins: alpha-1-microglobulin, which belongs to the

superfamily of lipocalin transport proteins and may play a role in the regulation of inflammatory processes, and bikunin, which is a urinary trypsin inhibitor belonging to the superfamily of Kunitz-type protease inhibitors and plays an important role in many physiological and pathological processes. This gene is located on chromosome 9 in a cluster of lipocalin genes.

#### **AMBP Antibody (monoclonal) (M01) - References**

1. Differential proteomics analysis of amniotic fluid in pregnancies of increased nuchal translucency with normal karyotype. Cheng PJ, Wang TH, Huang SY, Kao CC, Lu JH, Hsiao CH, Steven Shaw SW. *Prenat Diagn.* 2011 Feb 10. doi: 10.1002 /pd.2719. [Epub ahead of print]