

**ALPPL2 Antibody (monoclonal) (M07)**

Mouse monoclonal antibody raised against a partial recombinant ALPPL2.

Catalog # AT1125a

**Specification**

---

**ALPPL2 Antibody (monoclonal) (M07) - Product Information**

Application	IP, WB, IHC
Primary Accession	<a href="#">P10696</a>
Other Accession	<a href="#">NM_031313</a>
Reactivity	Human
Host	Mouse
Clonality	Monoclonal
Isotype	IgG2a Kappa
Calculated MW	57377

**ALPPL2 Antibody (monoclonal) (M07) - Additional Information**

Gene ID 251

**Other Names**

Alkaline phosphatase, placental-like, ALP-1, Alkaline phosphatase Nagao isozyme, Germ cell alkaline phosphatase, GCAP, Placental alkaline phosphatase-like, PLAP-like, ALPPL2, ALPPL

**Target/Specificity**

ALPPL2 (NP\_112603, 365 a.a. ~ 454 a.a) partial recombinant protein with GST tag. MW of the GST tag alone is 26 KDa.

**Dilution**

WB~~1:500~1000

**Format**

Clear, colorless solution in phosphate buffered saline, pH 7.2 .

**Storage**

Store at -20°C or lower. Aliquot to avoid repeated freezing and thawing.

**Precautions**

ALPPL2 Antibody (monoclonal) (M07) is for research use only and not for use in diagnostic or therapeutic procedures.

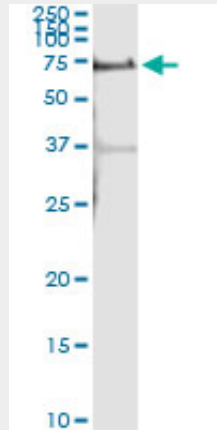
**ALPPL2 Antibody (monoclonal) (M07) - Protocols**

Provided below are standard protocols that you may find useful for product applications.

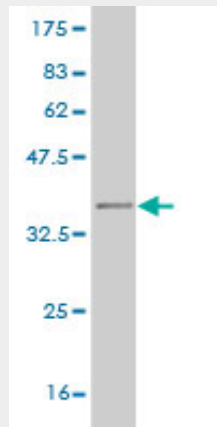
- [Western Blot](#)
- [Blocking Peptides](#)
- [Dot Blot](#)

- [Immunohistochemistry](#)
- [Immunofluorescence](#)
- [Immunoprecipitation](#)
- [Flow Cytometry](#)
- [Cell Culture](#)

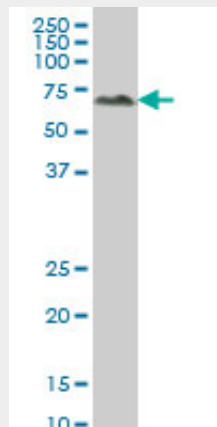
### ALPPL2 Antibody (monoclonal) (M07) - Images



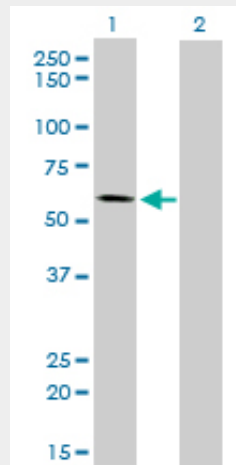
Immunoprecipitation of ALPPL2 transfected lysate using anti-ALPPL2 monoclonal antibody and Protein A Magnetic Bead ([U0007](#)), and immunoblotted with ALPPL2 MaxPab rabbit polyclonal antibody.



Antibody Reactive Against Recombinant Protein. Western Blot detection against Immunogen (35.64 KDa) .

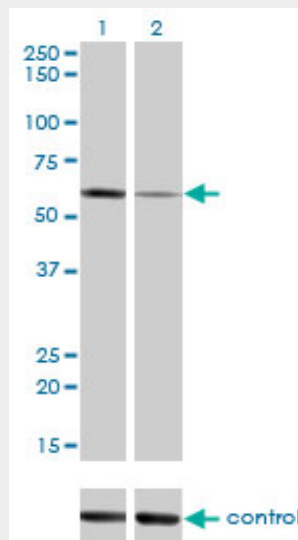


ALPPL2 monoclonal antibody (M07), clone 2B3 Western Blot analysis of ALPPL2 expression in A-431 ( (Cat # AT1125a )

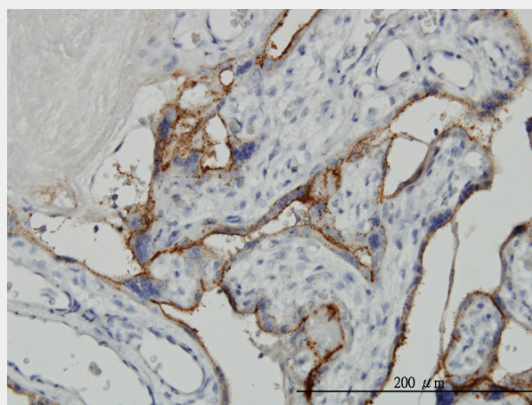


Western Blot analysis of ALPPL2 expression in transfected 293T cell line by ALPPL2 monoclonal antibody (M07), clone 2B3.

Lane 1: ALPPL2 transfected lysate(57.5 KDa).  
Lane 2: Non-transfected lysate.



Western blot analysis of ALPPL2 over-expressed 293 cell line, cotransfected with ALPPL2 Validated Chimera RNAi ( (Cat # AT1125a )



Immunoperoxidase of monoclonal antibody to ALPPL2 on formalin-fixed paraffin-embedded human placenta. [antibody concentration 3 ug/ml]

### **ALPPL2 Antibody (monoclonal) (M07) - Background**

There are at least four distinct but related alkaline phosphatases: intestinal, placental, placental-like, and liver/bone/kidney (tissue non-specific). The product of this gene is a membrane bound glycosylated enzyme, localized to testis, thymus and certain germ cell tumors, that is closely related to both the placental and intestinal forms of alkaline phosphatase.

### **ALPPL2 Antibody (monoclonal) (M07) - References**

Premature induction of hypertrophy during in vitro chondrogenesis of human mesenchymal stem cells correlates with calcification and vascular invasion after ectopic transplantation in SCID mice. Pelttari K, et al. Arthritis Rheum, 2006 Oct. PMID 17009260. Involvement of intestinal alkaline phosphatase in serum apolipoprotein B-48 level and its association with ABO and secretor blood group types. Nakano T, et al. Biochem Biophys Res Commun, 2006 Mar 3. PMID 16412386. Diversification of transcriptional modulation: large-scale identification and characterization of putative alternative promoters of human genes. Kimura K, et al. Genome Res, 2006 Jan. PMID 16344560. Generation and annotation of the DNA sequences of human chromosomes 2 and 4. Hillier LW, et al. Nature, 2005 Apr 7. PMID 15815621. The status, quality, and expansion of the NIH full-length cDNA project: the Mammalian Gene Collection (MGC). Gerhard DS, et al. Genome Res, 2004 Oct. PMID 15489334.