

## **ALOX15 Antibody (monoclonal) (M04)**

Mouse monoclonal antibody raised against a full length recombinant ALOX15.

Catalog # AT1123a

### **Specification**

---

#### **ALOX15 Antibody (monoclonal) (M04) - Product Information**

Application	WB, IHC, E
Primary Accession	<a href="#">P16050</a>
Other Accession	<a href="#">BC029032</a>
Reactivity	Human
Host	Mouse
Clonality	Monoclonal
Isotype	IgG2a Kappa
Calculated MW	74804

#### **ALOX15 Antibody (monoclonal) (M04) - Additional Information**

**Gene ID** 246

##### **Other Names**

Arachidonate 15-lipoxygenase, 15-LOX, 15-LOX-1, 12/15-lipoxygenase, Arachidonate 12-lipoxygenase, leukocyte-type, 12-LOX, Arachidonate omega-6 lipoxygenase, ALOX15, LOG15

##### **Target/Specificity**

ALOX15 (AAH29032, 1 a.a. ~ 662 a.a) full-length recombinant protein with GST tag. MW of the GST tag alone is 26 KDa.

##### **Dilution**

WB~~1:500~1000

##### **Format**

Clear, colorless solution in phosphate buffered saline, pH 7.2 .

##### **Storage**

Store at -20°C or lower. Aliquot to avoid repeated freezing and thawing.

##### **Precautions**

ALOX15 Antibody (monoclonal) (M04) is for research use only and not for use in diagnostic or therapeutic procedures.

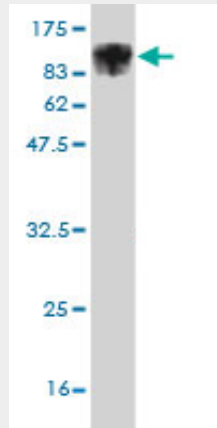
#### **ALOX15 Antibody (monoclonal) (M04) - Protocols**

Provided below are standard protocols that you may find useful for product applications.

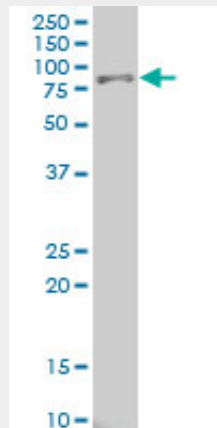
- [Western Blot](#)
- [Blocking Peptides](#)
- [Dot Blot](#)

- [Immunohistochemistry](#)
- [Immunofluorescence](#)
- [Immunoprecipitation](#)
- [Flow Cytometry](#)
- [Cell Culture](#)

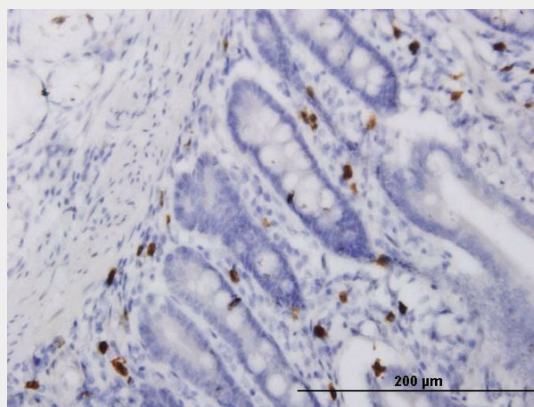
### ALOX15 Antibody (monoclonal) (M04) - Images



Antibody Reactive Against Recombinant Protein. Western Blot detection against Immunogen (98.56 KDa) .

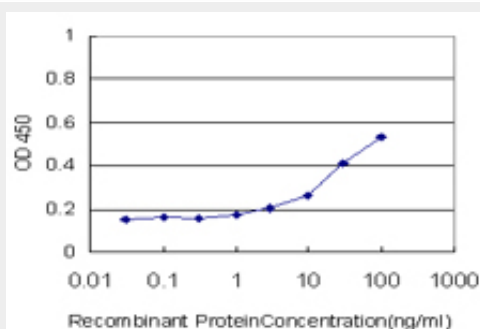


ALOX15 monoclonal antibody (M04), clone 3D8 Western Blot analysis of ALOX15 expression in HeLa S3 NE ( (Cat # AT1123a )



Immunoperoxidase of monoclonal antibody to ALOX15 on formalin-fixed paraffin-embedded

human small Intestine. [antibody concentration 1.5 ug/ml]



Detection limit for recombinant GST tagged ALOX15 is approximately 3ng/ml as a capture antibody.

### **ALOX15 Antibody (monoclonal) (M04) - References**

- 1.Expression and localization of prostaglandin receptors and stromal factors in human cervix—variations in pregnant and non-pregnant states. Blesson CS, Roos N, Stephansson O, Masironi B, Reinert S, Stjernholm YV, Ekman-Ordeberg G, Sahlin L. *Open Journal of Molecular and Integrative Physiology*, 3, 147-157.
- 2.Systematic analysis of rat 12/15-lipoxygenase enzymes reveals critical role for spinal eLOX3 hepoxilin synthase activity in inflammatory hyperalgesia. Gregus AM, Dumlao DS, Wei SC, Norris PC, Catella LC, Meyerstein FG, Buczynski MW, Steinauer JJ, Fitzsimmons BL, Yaksh TL, Dennis EAFASEB J. 2013 May;27(5):1939-49. doi: 10.1096/fj.12-217414. Epub 2013 Feb 4.
- 3.Differential Expression and Localization of 12/15 Lipoxygenases in Adipose Tissue in Human Obese Subjects. Dobrian AD, Lieb DC, Ma Q, Lindsay JW, Cole BK, Ma K, Chakrabarti SK, Kuhn NS, Wohlgemuth SD, Fontana M, Nadler JL. *Biochem Biophys Res Commun*. 2010 Nov 19. [Epub ahead of print]
- 4.Selective survival rescue in 15-lipoxygenase-1 deficient retinal pigment epithelial cells by the novel docosahexaenoic acid-derived mediator, neuroprotectin D1. Calandria JM, Marcheselli VL, Mukherjee PK, Uddin J, Winkler JW, Petasis NA, Bazan NG. *J Biol Chem*. 2009 Jun 26;284(26):17877-82. Epub 2009 Apr 29.