

ALDOA Antibody (monoclonal) (M02)

Mouse monoclonal antibody raised against a full length recombinant ALDOA.

Catalog # AT1116a

Specification

ALDOA Antibody (monoclonal) (M02) - Product Information

Application	IF, WB
Primary Accession	P04075
Other Accession	BC010660
Reactivity	Human
Host	mouse
Clonality	Monoclonal
Isotype	IgG1 kappa
Calculated MW	39420

ALDOA Antibody (monoclonal) (M02) - Additional Information

Gene ID 226

Other Names

Fructose-bisphosphate aldolase A, Lung cancer antigen NY-LU-1, Muscle-type aldolase, ALDOA, ALDA

Target/Specificity

ALDOA (AAH10660.1, 1 a.a. ~ 364 a.a) full-length recombinant protein with GST tag. MW of the GST tag alone is 26 KDa.

Dilution

WB~~1:500~1000

Format

Clear, colorless solution in phosphate buffered saline, pH 7.2 .

Storage

Store at -20°C or lower. Aliquot to avoid repeated freezing and thawing.

Precautions

ALDOA Antibody (monoclonal) (M02) is for research use only and not for use in diagnostic or therapeutic procedures.

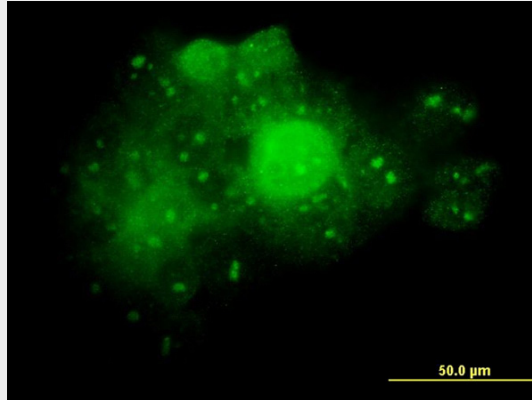
ALDOA Antibody (monoclonal) (M02) - Protocols

Provided below are standard protocols that you may find useful for product applications.

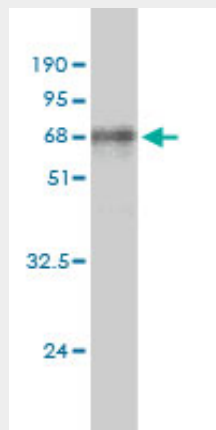
- [Western Blot](#)
- [Blocking Peptides](#)
- [Dot Blot](#)

- [Immunohistochemistry](#)
- [Immunofluorescence](#)
- [Immunoprecipitation](#)
- [Flow Cytometry](#)
- [Cell Culture](#)

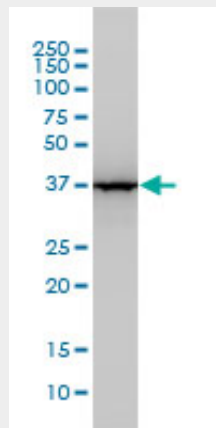
ALDOA Antibody (monoclonal) (M02) - Images



Immunofluorescence of monoclonal antibody to ALDOA on A-431 cell. [antibody concentration 10 ug/ml]

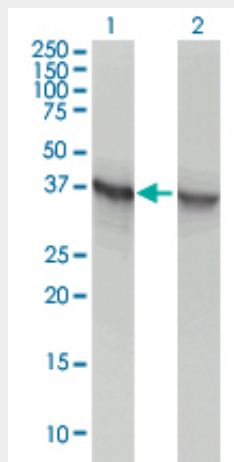


Antibody Reactive Against Recombinant Protein. Western Blot detection against Immunogen (65.78 KDa) .



ALDOA monoclonal antibody (M01), clone 3C12-6D11 Western Blot analysis of ALDOA expression

in A-431 ((Cat # AT1116a)



Western Blot analysis of ALDOA expression in transfected 293T cell line by ALDOA monoclonal antibody (M02), clone 3C12-6D11.

Lane 1: ALDOA transfected lysate(39 KDa).

Lane 2: Non-transfected lysate.

ALDOA Antibody (monoclonal) (M02) - Background

This gene product, Aldolase A (fructose-bisphosphate aldolase) is a glycolytic enzyme that catalyzes the reversible conversion of fructose-1,6-bisphosphate to glyceraldehyde 3-phosphate and dihydroxyacetone phosphate. Three aldolase isozymes (A, B, and C), encoded by three different genes, are differentially expressed during development. Aldolase A is found in the developing embryo and is produced in even greater amounts in adult muscle. Aldolase A expression is repressed in adult liver, kidney and intestine and similar to aldolase C levels in brain and other nervous tissue. Aldolase A deficiency has been associated with myopathy and hemolytic anemia. Alternative splicing of this gene results in multiple transcript variants which encode the same protein.

ALDOA Antibody (monoclonal) (M02) - References

1. Grade-dependent proteomic characterization of kidney cancer. Perroud B, Ishimaru T, Borowsky AD, Weiss RH. Mol Cell Proteomics. 2009 May;8(5):971-85. Epub 2009 Jan 21.

ALDOA Antibody (monoclonal) (M02) - Citations

- [Key proteins of proteome underlying sperm malformation of rats exposed to low fenvalerate doses are highly related to P53](#)