

ALAS1 Antibody (monoclonal) (M01)

Mouse monoclonal antibody raised against a partial recombinant ALAS1.

Catalog # AT1105a

Specification

ALAS1 Antibody (monoclonal) (M01) - Product Information

Application	WB, E
Primary Accession	P13196
Other Accession	NM_000688
Reactivity	Human
Host	mouse
Clonality	Monoclonal
Isotype	IgG2a Kappa
Calculated MW	70581

ALAS1 Antibody (monoclonal) (M01) - Additional Information

Gene ID 211

Other Names

5-aminolevulinate synthase, nonspecific, mitochondrial, ALAS-H, 5-aminolevulinic acid synthase 1, Delta-ALA synthase 1, Delta-aminolevulinate synthase 1, ALAS1, ALAS3, ALASH

Target/Specificity

ALAS1 (NP_000679, 1 a.a. ~ 98 a.a) partial recombinant protein with GST tag. MW of the GST tag alone is 26 KDa.

Dilution

WB~~1:500~1000

Format

Clear, colorless solution in phosphate buffered saline, pH 7.2 .

Storage

Store at -20°C or lower. Aliquot to avoid repeated freezing and thawing.

Precautions

ALAS1 Antibody (monoclonal) (M01) is for research use only and not for use in diagnostic or therapeutic procedures.

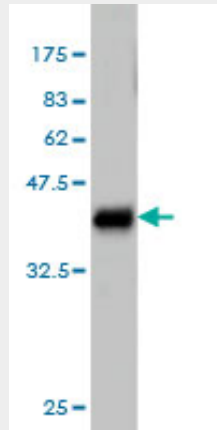
ALAS1 Antibody (monoclonal) (M01) - Protocols

Provided below are standard protocols that you may find useful for product applications.

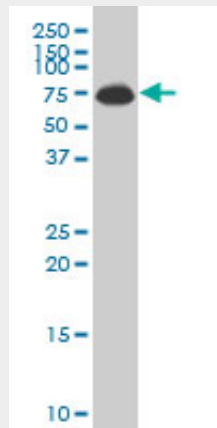
- [Western Blot](#)
- [Blocking Peptides](#)
- [Dot Blot](#)

- [Immunohistochemistry](#)
- [Immunofluorescence](#)
- [Immunoprecipitation](#)
- [Flow Cytometry](#)
- [Cell Culture](#)

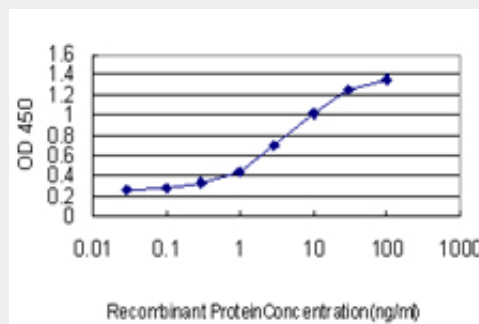
ALAS1 Antibody (monoclonal) (M01) - Images



Antibody Reactive Against Recombinant Protein. Western Blot detection against Immunogen (36.52 KDa) .



ALAS1 monoclonal antibody (M01), clone 3G10 Western Blot analysis of ALAS1 expression in JAR (Cat # AT1105a)



Detection limit for recombinant GST tagged ALAS1 is approximately 0.1ng/ml as a capture antibody.

ALAS1 Antibody (monoclonal) (M01) - Background

Delta-aminolevulinate synthase (ALAS; EC 2.3.1.37) catalyzes the condensation of glycine with succinyl-CoA to form delta-aminolevulinic acid. This nuclear-encoded mitochondrial enzyme is the first and rate-limiting enzyme in the mammalian heme biosynthetic pathway. There are 2 tissue-specific isozymes: a housekeeping enzyme encoded by the ALAS1 gene and an erythroid tissue-specific enzyme encoded by ALAS2 (MIM 301300).

ALAS1 Antibody (monoclonal) (M01) - References

1.PGC-1{alpha} is not mandatory for exercise- and training-induced adaptive gene responses in mouse skeletal muscle. Leick L, Wojtaszewski JF, Johansen ST, Kiilerich K, Comes G, Hellsten Y, Hidalgo J, Pilegaard H. *Am J Physiol Endocrinol Metab.* 2008 Feb;294(2):E463-74. Epub 2007 Dec 11.