

## **ADCYAP1R1 Antibody (monoclonal) (M01)**

Mouse monoclonal antibody raised against a partial recombinant ADCYAP1R1.

Catalog # AT1052a

### **Specification**

---

#### **ADCYAP1R1 Antibody (monoclonal) (M01) - Product Information**

Application	WB, E
Primary Accession	<a href="#">P41586</a>
Other Accession	<a href="#">NM_001118</a>
Reactivity	Human
Host	mouse
Clonality	Monoclonal
Isotype	IgG1 Kappa
Calculated MW	53314

#### **ADCYAP1R1 Antibody (monoclonal) (M01) - Additional Information**

**Gene ID** 117

##### **Other Names**

Pituitary adenylate cyclase-activating polypeptide type I receptor, PACAP type I receptor, PACAP-R-1, PACAP-R1, ADCYAP1R1

##### **Target/Specificity**

ADCYAP1R1 (NP\_001109, 21 a.a. ~ 120 a.a) partial recombinant protein with GST tag. MW of the GST tag alone is 26 KDa.

##### **Dilution**

WB~~1:500~1000

##### **Format**

Clear, colorless solution in phosphate buffered saline, pH 7.2 .

##### **Storage**

Store at -20°C or lower. Aliquot to avoid repeated freezing and thawing.

##### **Precautions**

ADCYAP1R1 Antibody (monoclonal) (M01) is for research use only and not for use in diagnostic or therapeutic procedures.

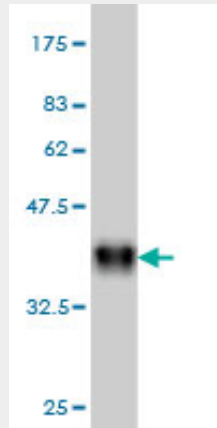
#### **ADCYAP1R1 Antibody (monoclonal) (M01) - Protocols**

Provided below are standard protocols that you may find useful for product applications.

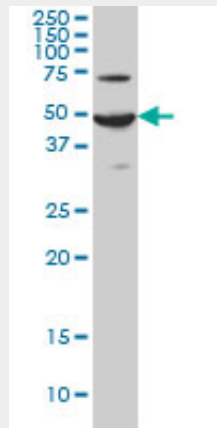
- [Western Blot](#)
- [Blocking Peptides](#)
- [Dot Blot](#)

- [Immunohistochemistry](#)
- [Immunofluorescence](#)
- [Immunoprecipitation](#)
- [Flow Cytometry](#)
- [Cell Culture](#)

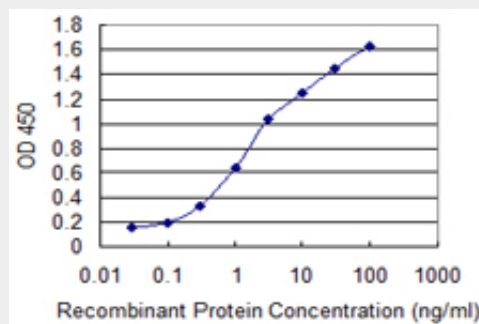
### ADCYAP1R1 Antibody (monoclonal) (M01) - Images



Antibody Reactive Against Recombinant Protein. Western Blot detection against Immunogen (36.74 kDa) .



ADCYAP1R1 monoclonal antibody (M01), clone 2B12 Western Blot analysis of ADCYAP1R1 expression in HeLa ( (Cat # AT1052a )



Detection limit for recombinant GST tagged ADCYAP1R1 is 0.03 ng/ml as a capture antibody.

### ADCYAP1R1 Antibody (monoclonal) (M01) - Background

This gene encodes type I adenylate cyclase activating polypeptide receptor, which is a membrane-associated protein and shares significant homology with members of the glucagon/secretin receptor family. This receptor mediates diverse biological actions of adenylate cyclase activating polypeptide 1 and is positively coupled to adenylate cyclase. Alternative splicing of two exons of this gene generates four major splice variants, but their full-length nature has not been determined.

#### **ADCYAP1R1 Antibody (monoclonal) (M01) - References**

Vasoactive intestinal peptide (VIP) receptor expression in monocyte-derived macrophages from COPD patients. Burian B, et al. Peptides, 2010 Apr. PMID 20026142. Luteinizing hormone-stimulated pituitary adenylate cyclase-activating polypeptide system and its role in progesterone production in human luteinized granulosa cells. Park HJ, et al. Endocr J, 2010. PMID 19926922. Calmodulin interacts with PAC1 and VPAC2 receptors and regulates PACAP-induced FOS expression in human neuroblastoma cells. Falktoft B, et al. Neuropeptides, 2009 Apr. PMID 19269029. Identification of new putative susceptibility genes for several psychiatric disorders by association analysis of regulatory and non-synonymous SNPs of 306 genes involved in neurotransmission and neurodevelopment. Gratac?s M, et al. Am J Med Genet B Neuropsychiatr Genet, 2009 Sep 5. PMID 19086053. Novel stable PACAP analogs with potent activity towards the PAC1 receptor. Bourgault S, et al. Peptides, 2008 Jun. PMID 18353507.