

**ADCY5 Antibody (monoclonal) (M01)**

Mouse monoclonal antibody raised against a partial recombinant ADCY5.

Catalog # AT1051a

**Specification**

---

**ADCY5 Antibody (monoclonal) (M01) - Product Information**

|                   |                           |
|-------------------|---------------------------|
| Application       | WB, E                     |
| Primary Accession | <a href="#">O95622</a>    |
| Other Accession   | <a href="#">NM_183357</a> |
| Reactivity        | Human                     |
| Host              | mouse                     |
| Clonality         | Monoclonal                |
| Isotype           | IgG2b Kappa               |
| Calculated MW     | 138908                    |

**ADCY5 Antibody (monoclonal) (M01) - Additional Information****Gene ID** 111**Other Names**

Adenylate cyclase type 5, ATP pyrophosphate-lyase 5, Adenylate cyclase type V, Adenylyl cyclase 5, ADCY5

**Target/Specificity**

ADCY5 (NP\_899200, 1152 a.a. ~ 1261 a.a) partial recombinant protein with GST tag. MW of the GST tag alone is 26 KDa.

**Dilution**

WB~~1:500~1000

**Format**

Clear, colorless solution in phosphate buffered saline, pH 7.2 .

**Storage**

Store at -20°C or lower. Aliquot to avoid repeated freezing and thawing.

**Precautions**

ADCY5 Antibody (monoclonal) (M01) is for research use only and not for use in diagnostic or therapeutic procedures.

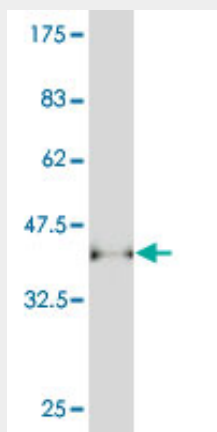
**ADCY5 Antibody (monoclonal) (M01) - Protocols**

Provided below are standard protocols that you may find useful for product applications.

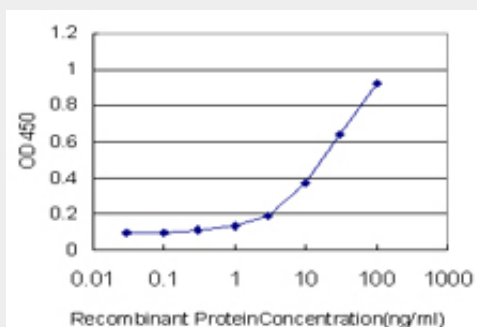
- [Western Blot](#)
- [Blocking Peptides](#)
- [Dot Blot](#)

- [Immunohistochemistry](#)
- [Immunofluorescence](#)
- [Immunoprecipitation](#)
- [Flow Cytometry](#)
- [Cell Culture](#)

### ADCY5 Antibody (monoclonal) (M01) - Images



Antibody Reactive Against Recombinant Protein. Western Blot detection against Immunogen (37.84 KDa) .



Detection limit for recombinant GST tagged ADCY5 is approximately 1ng/ml as a capture antibody.

### ADCY5 Antibody (monoclonal) (M01) - Background

ADCY5 belongs to the adenylate cyclase (EC 4.6.1.1) family of enzymes responsible for the synthesis of cAMP (Ludwig and Seuwen, 2002 [PubMed 12503609]).

### ADCY5 Antibody (monoclonal) (M01) - References

1. An adenylyl cyclase signaling pathway predicts direct dopaminergic input to vestibular hair cells. Drescher MJ, Cho WJ, Folbe AJ, Selvakumar D, Kewson DT, Abu-Hamdan MD, Oh CK, Ramakrishnan NA, Hatfield JS, Khan KM, Anne S, Harpool EC, Drescher DG. *Neuroscience*. 2010 Sep 29. [Epub ahead of print]