

**ADAM2 Antibody (monoclonal) (M01)**

Mouse monoclonal antibody raised against a partial recombinant ADAM2.

Catalog # AT1043a

**Specification**

---

**ADAM2 Antibody (monoclonal) (M01) - Product Information**

Application	WB, E
Primary Accession	<a href="#">O99965</a>
Other Accession	<a href="#">NM_001464</a>
Reactivity	Human
Host	mouse
Clonality	Monoclonal
Isotype	IgG2a Kappa
Calculated MW	82457

**ADAM2 Antibody (monoclonal) (M01) - Additional Information****Gene ID** 2515**Other Names**

Disintegrin and metalloproteinase domain-containing protein 2, ADAM 2, Cancer/testis antigen 15, CT15, Fertilin subunit beta, PH-30, PH30, PH30-beta, ADAM2, FTNB

**Target/Specificity**

ADAM2 (NP\_001455, 376 a.a. ~ 475 a.a) partial recombinant protein with GST tag. MW of the GST tag alone is 26 KDa.

**Dilution**

WB~~1:500~1000

**Format**

Clear, colorless solution in phosphate buffered saline, pH 7.2 .

**Storage**

Store at -20°C or lower. Aliquot to avoid repeated freezing and thawing.

**Precautions**

ADAM2 Antibody (monoclonal) (M01) is for research use only and not for use in diagnostic or therapeutic procedures.

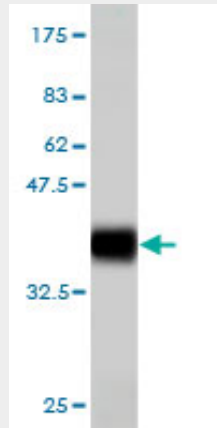
**ADAM2 Antibody (monoclonal) (M01) - Protocols**

Provided below are standard protocols that you may find useful for product applications.

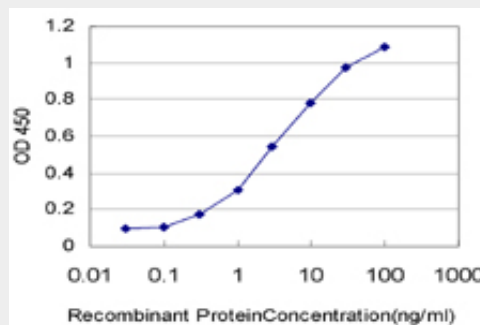
- [Western Blot](#)
- [Blocking Peptides](#)
- [Dot Blot](#)

- [Immunohistochemistry](#)
- [Immunofluorescence](#)
- [Immunoprecipitation](#)
- [Flow Cytometry](#)
- [Cell Culture](#)

### ADAM2 Antibody (monoclonal) (M01) - Images



Antibody Reactive Against Recombinant Protein. Western Blot detection against Immunogen (36.74 kDa).



Detection limit for recombinant GST tagged ADAM2 is approximately 0.1 ng/ml as a capture antibody.

### ADAM2 Antibody (monoclonal) (M01) - Background

This gene encodes a member of the ADAM (a disintegrin and metalloprotease domain) family. Members of this family are membrane-anchored proteins structurally related to snake venom disintegrins, and have been implicated in a variety of biological processes involving cell-cell and cell-matrix interactions, including fertilization, muscle development, and neurogenesis. This member is a subunit of an integral sperm membrane glycoprotein called fertilin, which plays an important role in sperm-egg interactions.

### ADAM2 Antibody (monoclonal) (M01) - References

Association between fertilin beta, protamines 1 and 2 and spermatid-specific linker histone H1-like protein mRNA levels, fertilization ability of human spermatozoa, and quality of preimplantation embryos. Depa-Martyn M, et al. *Folia Histochem Cytobiol*, 2007. PMID 18292840. The status, quality, and expansion of the NIH full-length cDNA project: the Mammalian Gene Collection (MGC). Gerhard DS, et al. *Genome Res*, 2004 Oct. PMID 15489334. Generation and initial analysis of more than 15,000 full-length human and mouse cDNA sequences. Strausberg RL, et al. *Proc Natl Acad Sci U S A*, 2002 Dec 24. PMID 12477932. Functional classification of ADAMs based on a conserved motif

for binding to integrin alpha 9beta 1: implications for sperm-egg binding and other cell interactions. Eto K, et al. J Biol Chem, 2002 May 17. PMID 11882657. Calmegin is required for fertilin alpha/beta heterodimerization and sperm fertility. Ikawa M, et al. Dev Biol, 2001 Dec 1. PMID 11784061.