

## **ADAM12 Antibody (monoclonal) (M01)**

Mouse monoclonal antibody raised against a partial recombinant ADAM12.

Catalog # AT1042a

### **Specification**

---

#### **ADAM12 Antibody (monoclonal) (M01) - Product Information**

Application	WB, E
Primary Accession	<a href="#">O43184</a>
Other Accession	<a href="#">NM_003474</a>
Reactivity	Human
Host	mouse
Clonality	Monoclonal
Isotype	IgG3 Kappa
Calculated MW	99542

#### **ADAM12 Antibody (monoclonal) (M01) - Additional Information**

**Gene ID** 8038

##### **Other Names**

Disintegrin and metalloproteinase domain-containing protein 12, ADAM 12, 3424-, Meltrin-alpha, ADAM12, MLTN

##### **Target/Specificity**

ADAM12 (NP\_003465, 208 a.a. ~ 304 a.a) partial recombinant protein with GST tag. MW of the GST tag alone is 26 KDa.

##### **Dilution**

WB~~1:500~1000

##### **Format**

Clear, colorless solution in phosphate buffered saline, pH 7.2 .

##### **Storage**

Store at -20°C or lower. Aliquot to avoid repeated freezing and thawing.

##### **Precautions**

ADAM12 Antibody (monoclonal) (M01) is for research use only and not for use in diagnostic or therapeutic procedures.

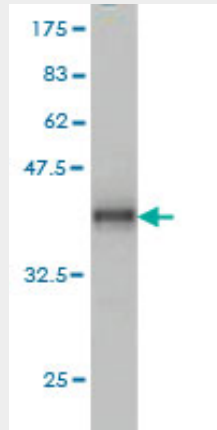
#### **ADAM12 Antibody (monoclonal) (M01) - Protocols**

Provided below are standard protocols that you may find useful for product applications.

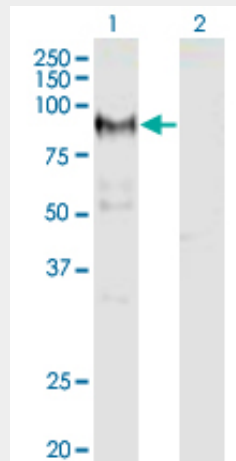
- [Western Blot](#)
- [Blocking Peptides](#)
- [Dot Blot](#)

- [Immunohistochemistry](#)
- [Immunofluorescence](#)
- [Immunoprecipitation](#)
- [Flow Cytometry](#)
- [Cell Culture](#)

### ADAM12 Antibody (monoclonal) (M01) - Images



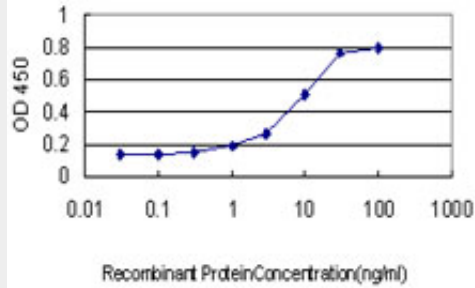
Antibody Reactive Against Recombinant Protein. Western Blot detection against Immunogen (36.41 kDa) .



Western Blot analysis of ADAM12 expression in transfected 293T cell line by ADAM12 monoclonal antibody (M01), clone 1G3.

Lane 1: ADAM12 transfected lysate (Predicted MW: 80.4 kDa).

Lane 2: Non-transfected lysate.



Detection limit for recombinant GST tagged ADAM12 is approximately 0.3ng/ml as a capture antibody.

### **ADAM12 Antibody (monoclonal) (M01) - Background**

This gene encodes a member of the ADAM (a disintegrin and metalloprotease) protein family. Members of this family are membrane-anchored proteins structurally related to snake venom disintegrins, and have been implicated in a variety of biological processes involving cell-cell and cell-matrix interactions, including fertilization, muscle development, and neurogenesis. This gene has two alternatively spliced transcripts: a shorter secreted form and a longer membrane-bound form. The shorter form is found to stimulate myogenesis.

### **ADAM12 Antibody (monoclonal) (M01) - References**

1. TM4SF3 promotes esophageal carcinoma metastasis via upregulating ADAM12m expression. Zhou Z, Ran YL, Hu H, Pan J, Li ZF, Chen LZ, Sun LC, Peng L, Zhao XL, Yu L, Sun LX, Yang ZH. Clin Exp Metastasis. 2008;25(5):537-48. Epub 2008 Mar 26.