

ADAM11 Antibody (monoclonal) (M01)

Mouse monoclonal antibody raised against a partial recombinant ADAM11.

Catalog # AT1041a

Specification

ADAM11 Antibody (monoclonal) (M01) - Product Information

| | |
|-------------------|---------------------------|
| Application | WB, E |
| Primary Accession | O75078 |
| Other Accession | NM_002390 |
| Reactivity | Human |
| Host | mouse |
| Clonality | Monoclonal |
| Isotype | IgG2b Kappa |
| Calculated MW | 83418 |

ADAM11 Antibody (monoclonal) (M01) - Additional Information

Gene ID 4185

Other Names

Disintegrin and metalloproteinase domain-containing protein 11, ADAM 11, Metalloproteinase-like, disintegrin-like, and cysteine-rich protein, MDC, ADAM11, MDC

Target/Specificity

ADAM11 (NP_002381, 230 a.a. ~ 333 a.a) partial recombinant protein with GST tag. MW of the GST tag alone is 26 KDa.

Dilution

WB~~1:500~1000

Format

Clear, colorless solution in phosphate buffered saline, pH 7.2 .

Storage

Store at -20°C or lower. Aliquot to avoid repeated freezing and thawing.

Precautions

ADAM11 Antibody (monoclonal) (M01) is for research use only and not for use in diagnostic or therapeutic procedures.

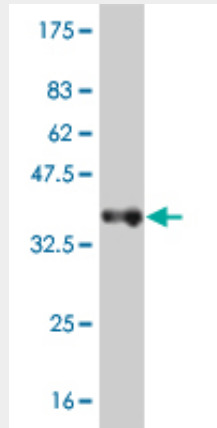
ADAM11 Antibody (monoclonal) (M01) - Protocols

Provided below are standard protocols that you may find useful for product applications.

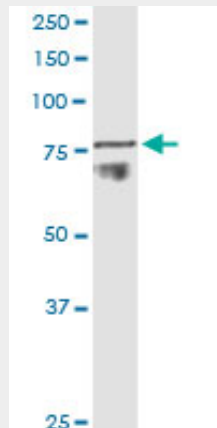
- [Western Blot](#)
- [Blocking Peptides](#)
- [Dot Blot](#)

- [Immunohistochemistry](#)
- [Immunofluorescence](#)
- [Immunoprecipitation](#)
- [Flow Cytometry](#)
- [Cell Culture](#)

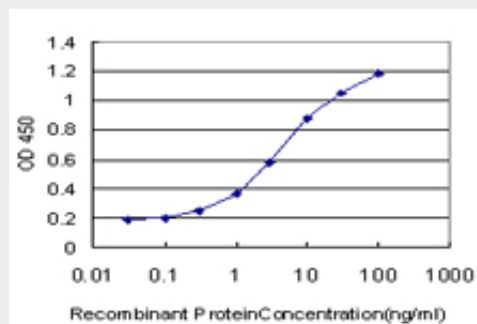
ADAM11 Antibody (monoclonal) (M01) - Images



Antibody Reactive Against Recombinant Protein. Western Blot detection against Immunogen (37.18 KDa) .



ADAM11 monoclonal antibody (M01), clone 3D4. Western Blot analysis of ADAM11 expression in human colon.



Detection limit for recombinant GST tagged ADAM11 is approximately 0.1ng/ml as a capture antibody.

ADAM11 Antibody (monoclonal) (M01) - Background

This gene encodes a member of the ADAM (a disintegrin and metalloprotease) protein family. Members of this family are membrane-anchored proteins structurally related to snake venom disintegrins, and have been implicated in a variety of biological processes involving cell-cell and cell-matrix interactions, including fertilization, muscle development, and neurogenesis. This gene represents a candidate tumor suppressor gene for human breast cancer based on its location within a minimal region of chromosome 17q21 previously defined by tumor deletion mapping.

ADAM11 Antibody (monoclonal) (M01) - References

A human protein-protein interaction network: a resource for annotating the proteome. Stelzl U, et al. Cell, 2005 Sep 23. PMID 16169070. Circular rapid amplification of cDNA ends for high-throughput extension cloning of partial genes. Fu GK, et al. Genomics, 2004 Jul. PMID 15203218. Transcriptome characterization elucidates signaling networks that control human ES cell growth and differentiation. Brandenberger R, et al. Nat Biotechnol, 2004 Jun. PMID 15146197. An unappreciated role for RNA surveillance. Hillman RT, et al. Genome Biol, 2004. PMID 14759258. Generation and initial analysis of more than 15,000 full-length human and mouse cDNA sequences. Strausberg RL, et al. Proc Natl Acad Sci U S A, 2002 Dec 24. PMID 12477932.