

ABCF2 Antibody (monoclonal) (M01)

Mouse monoclonal antibody raised against a partial recombinant ABCF2.

Catalog # AT1010a

Specification

ABCF2 Antibody (monoclonal) (M01) - Product Information

Application	IP, WB, IHC, E
Primary Accession	O9UG63
Other Accession	BC001661
Reactivity	Human
Host	mouse
Clonality	Monoclonal
Isotype	IgG2a Kappa
Calculated MW	71290

ABCF2 Antibody (monoclonal) (M01) - Additional Information**Gene ID** 10061;114483834**Other Names**

ATP-binding cassette sub-family F member 2, Iron-inhibited ABC transporter 2, ABCF2

Target/Specificity

ABCF2 (AAH01661, 1 a.a. ~ 110 a.a) partial recombinant protein with GST tag. MW of the GST tag alone is 26 KDa.

Dilution

WB~~1:500~1000

Format

Clear, colorless solution in phosphate buffered saline, pH 7.2 .

Storage

Store at -20°C or lower. Aliquot to avoid repeated freezing and thawing.

Precautions

ABCF2 Antibody (monoclonal) (M01) is for research use only and not for use in diagnostic or therapeutic procedures.

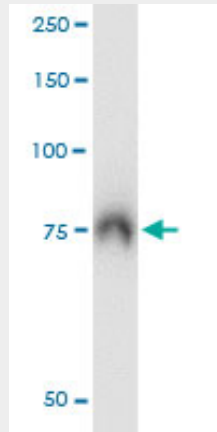
ABCF2 Antibody (monoclonal) (M01) - Protocols

Provided below are standard protocols that you may find useful for product applications.

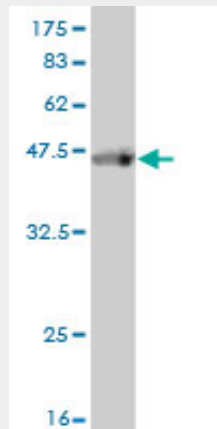
- [Western Blot](#)
- [Blocking Peptides](#)
- [Dot Blot](#)
- [Immunohistochemistry](#)

- [Immunofluorescence](#)
- [Immunoprecipitation](#)
- [Flow Cytometry](#)
- [Cell Culture](#)

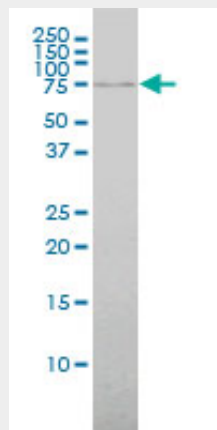
ABCF2 Antibody (monoclonal) (M01) - Images



Immunoprecipitation of ABCF2 transfected lysate using anti-ABCF2 monoclonal antibody and Protein A Magnetic Bead ([U0007](#)), and immunoblotted with ABCF2 monoclonal antibody.

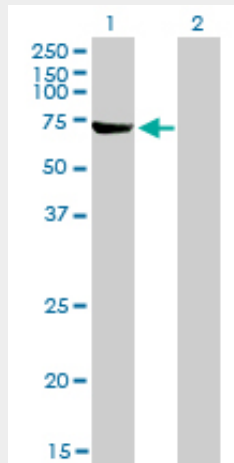


Antibody Reactive Against Recombinant Protein. Western Blot detection against Immunogen (37.73 KDa) .



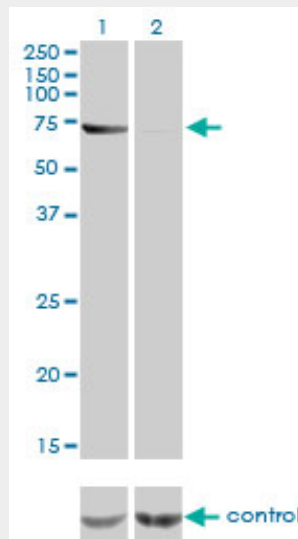
ABCF2 monoclonal antibody (M01), clone 1D11 Western Blot analysis of ABCF2 expression in HeLa

((Cat # AT1010a)

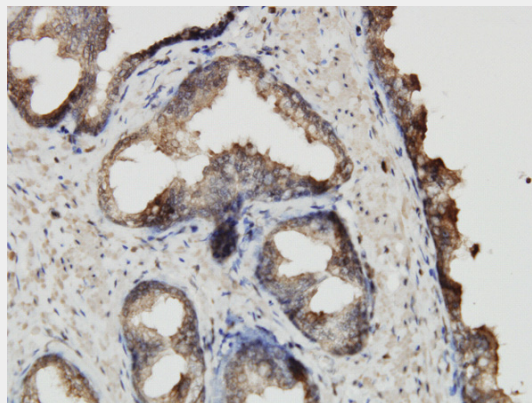


Western Blot analysis of ABCF2 expression in transfected 293T cell line by ABCF2 monoclonal antibody (M01), clone 1D11.

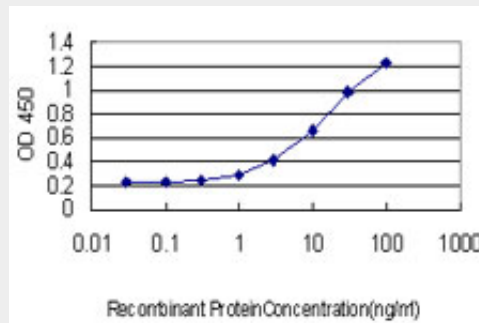
Lane 1: ABCF2 transfected lysate(68.53 KDa).
Lane 2: Non-transfected lysate.



Western blot analysis of ABCF2 over-expressed 293 cell line, cotransfected with ABCF2 Validated Chimera RNAi ((Cat # AT1010a)



Immunoperoxidase of monoclonal antibody to ABCF2 on formalin-fixed paraffin-embedded human prostate. [antibody concentration 3 ug/ml]



Detection limit for recombinant GST tagged ABCF2 is approximately 0.3ng/ml as a capture antibody.

ABCF2 Antibody (monoclonal) (M01) - Background

The protein encoded by this gene is a member of the superfamily of ATP-binding cassette (ABC) transporters. ABC proteins transport various molecules across extra- and intracellular membranes. ABC genes are divided into seven distinct subfamilies (ABC1, MDR/TAP, MRP, ALD, OABP, GCN20, and White). This protein is a member of the GCN20 subfamily. Alternative splicing of this gene results in multiple transcript variants.

ABCF2 Antibody (monoclonal) (M01) - References

Association study between single-nucleotide polymorphisms in 199 drug-related genes and commonly measured quantitative traits of 752 healthy Japanese subjects. Saito A, et al. *J Hum Genet*, 2009 Jun. PMID 19343046. Can ABCF2 protein expression predict the prognosis of uterine cancer? Nishimura S, et al. *Br J Cancer*, 2008 Nov 18. PMID 19002184. Differential expression of ABCF2 protein among different histologic types of epithelial ovarian cancer and in clear cell adenocarcinomas of different organs. Nishimura S, et al. *Hum Pathol*, 2007 Jan. PMID 16996567. Identification of overexpression and amplification of ABCF2 in clear cell ovarian adenocarcinomas by cDNA microarray analyses. Tsuda H, et al. *Clin Cancer Res*, 2005 Oct 1. PMID 16203778. The status, quality, and expansion of the NIH full-length cDNA project: the Mammalian Gene Collection (MGC). Gerhard DS, et al. *Genome Res*, 2004 Oct. PMID 15489334.