

**ABCC6 Antibody (monoclonal) (M02)****Mouse monoclonal antibody raised against a partial recombinant ABCC6.****Catalog # AT1008a****Specification**

---

**ABCC6 Antibody (monoclonal) (M02) - Product Information**

Application	<b>WB, E</b>
Primary Accession	<a href="#">O95255</a>
Other Accession	<a href="#">NM_001171</a>
Reactivity	<b>Human</b>
Host	<b>mouse</b>
Clonality	<b>Monoclonal</b>
Isotype	<b>IgG1 Kappa</b>
Calculated MW	<b>164906</b>

**ABCC6 Antibody (monoclonal) (M02) - Additional Information****Gene ID** 368**Other Names**

Multidrug resistance-associated protein 6, ATP-binding cassette sub-family C member 6, Anthracycline resistance-associated protein, Multi-specific organic anion transporter E, MOAT-E, ABCC6, ARA, MRP6

**Target/Specificity**

ABCC6 (NP\_001162, 831 a.a. ~ 930 a.a) partial recombinant protein with GST tag. MW of the GST tag alone is 26 KDa.

**Dilution**

WB~~1:500~1000

**Format**

Clear, colorless solution in phosphate buffered saline, pH 7.2 .

**Storage**

Store at -20°C or lower. Aliquot to avoid repeated freezing and thawing.

**Precautions**

ABCC6 Antibody (monoclonal) (M02) is for research use only and not for use in diagnostic or therapeutic procedures.

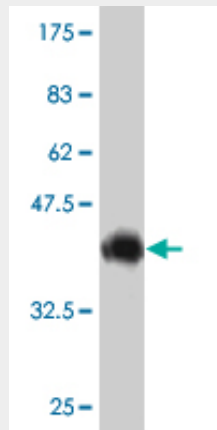
**ABCC6 Antibody (monoclonal) (M02) - Protocols**

Provided below are standard protocols that you may find useful for product applications.

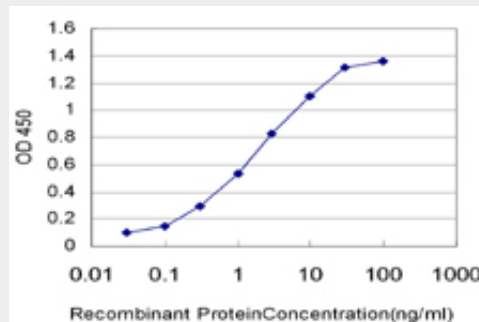
- [Western Blot](#)
- [Blocking Peptides](#)

- [Dot Blot](#)
- [Immunohistochemistry](#)
- [Immunofluorescence](#)
- [Immunoprecipitation](#)
- [Flow Cytometry](#)
- [Cell Culture](#)

### ABCC6 Antibody (monoclonal) (M02) - Images



Antibody Reactive Against Recombinant Protein. Western Blot detection against Immunogen (36.74 kDa) .



Detection limit for recombinant GST tagged ABCC6 is approximately 0.03ng/ml as a capture antibody.

### ABCC6 Antibody (monoclonal) (M02) - Background

The protein encoded by this gene is a member of the superfamily of ATP-binding cassette (ABC) transporters. ABC proteins transport various molecules across extra- and intra-cellular membranes. ABC genes are divided into seven distinct subfamilies (ABC1, MDR/TAP, MRP, ALD, OABP, GCN20, White). The encoded protein, a member of the MRP subfamily, is involved in multi-drug resistance. Mutations in this gene cause pseudoxanthoma elasticum. Alternatively spliced transcript variants that encode different proteins have been described for this gene.

### ABCC6 Antibody (monoclonal) (M02) - References

Analysis of MMP2 promoter polymorphisms in patients with pseudoxanthoma elasticum. Zarbock R, et al. Clin Chim Acta, 2010 Oct 9. PMID 20541540. The ERK1/2-hepatocyte nuclear factor 4alpha axis regulates human ABCC6 gene expression in hepatocytes. de Boussac H, et al. J Biol Chem, 2010 Jul 23. PMID 20463007. Novel deletions causing pseudoxanthoma elasticum underscore the genomic instability of the ABCC6 region. Costrop LM, et al. J Hum Genet, 2010 Feb. PMID 20075945. Pseudoxanthoma elasticum: molecular genetics and putative pathomechanisms. Uitto J,

et al. J Invest Dermatol, 2010 Mar. PMID 20032990. The R1141X loss-of-function mutation of the ABCC6 gene is a strong genetic risk factor for coronary artery disease. K?bl?s G, et al. Genet Test Mol Biomarkers, 2010 Feb. PMID 19929409.