

**Anti-HUMAN SERUM ALBUMIN (RABBIT) Antibody Biotin Conjugated**  
**Human Serum Albumin Antibody Biotin Conjugated**  
**Catalog # ASR5848**

**Specification**

**Anti-HUMAN SERUM ALBUMIN (RABBIT) Antibody Biotin Conjugated - Product Information**

Host	Rabbit
Conjugate	Biotin
FP Value	10-20
Target Species	Human
Reactivity	Human
Clonality	Polyclonal
Application	WB, IHC, E, I, LCI
Application Note	Anti-HUMAN SERUM ALBUMIN (RABBIT) Antibody Biotin Conjugated antibody has been tested in ELISA, western blot, and suitable in immunohistochemical assays. Optimal concentrations should be determined by researcher.
Physical State	Lyophilized
Buffer	0.02 M Potassium Phosphate, 0.15 M Sodium Chloride, pH 7.2
Immunogen	Human Serum Albumin
Reconstitution Volume	1.0 mL
Reconstitution Buffer	Restore with deionized water (or equivalent)
Stabilizer	10 mg/ml Polyethylene Glycol (PEG-8000)
Preservative	0.01% (w/v) Sodium Azide

**Anti-HUMAN SERUM ALBUMIN (RABBIT) Antibody Biotin Conjugated - Additional Information**

**Gene ID** 213

**Other Names**  
213

**Purity**

Anti-HUMAN SERUM ALBUMIN Antibody (Biotin Conjugated) was prepared from monospecific antiserum by immunoaffinity chromatography using purified human serum albumin. Assay by immunoelectrophoresis resulted in a single precipitin arc against anti-biotin and anti-Rabbit Serum. Analysis by SDS-PAGE was used to determine that this preparation is substantially free of aggregates and shows a banding pattern consistent with purified Rabbit IgG.

**Storage Condition**

Store vial at 4° C prior to restoration. For extended storage aliquot contents and freeze at -20° C or below. Avoid cycles of freezing and thawing. Centrifuge product if not completely clear after standing at room temperature. This product is stable for several weeks at 4° C as an undiluted liquid. Dilute only prior to immediate use.

**Precautions Note**

This product is for research use only and is not intended for therapeutic or diagnostic applications.

**Anti-HUMAN SERUM ALBUMIN (RABBIT) Antibody Biotin Conjugated - Protein Information****Name** ALB**Function**

Binds water, Ca(2+), Na(+), K(+), fatty acids, hormones, bilirubin and drugs (Probable). Its main function is the regulation of the colloidal osmotic pressure of blood (Probable). Major zinc transporter in plasma, typically binds about 80% of all plasma zinc (PubMed:<a href="http://www.uniprot.org/citations/19021548" target="\_blank">19021548</a>). Major calcium and magnesium transporter in plasma, binds approximately 45% of circulating calcium and magnesium in plasma (By similarity). Potentially has more than two calcium-binding sites and might additionally bind calcium in a non-specific manner (By similarity). The shared binding site between zinc and calcium at residue Asp-273 suggests a crosstalk between zinc and calcium transport in the blood (By similarity). The rank order of affinity is zinc > calcium > magnesium (By similarity). Binds to the bacterial siderophore enterobactin and inhibits enterobactin-mediated iron uptake of E.coli from ferric transferrin, and may thereby limit the utilization of iron and growth of enteric bacteria such as E.coli (PubMed:<a href="http://www.uniprot.org/citations/6234017" target="\_blank">6234017</a>). Does not prevent iron uptake by the bacterial siderophore aerobactin (PubMed:<a href="http://www.uniprot.org/citations/6234017" target="\_blank">6234017</a>).

**Cellular Location**

Secreted.

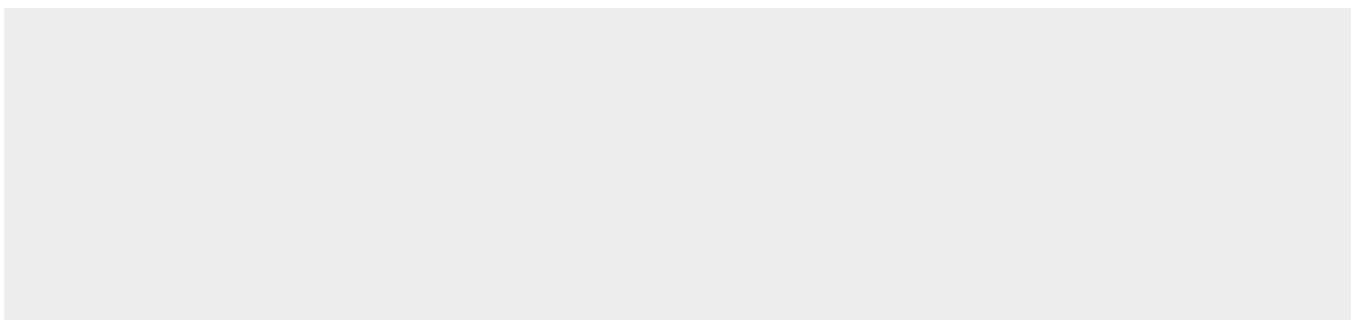
**Tissue Location**

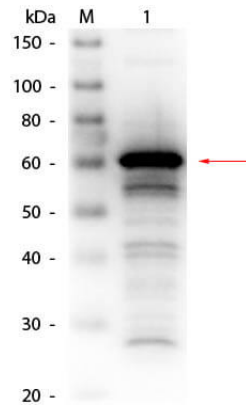
Plasma.

**Anti-HUMAN SERUM ALBUMIN (RABBIT) Antibody Biotin Conjugated - Protocols**

Provided below are standard protocols that you may find useful for product applications.

- [Western Blot](#)
- [Blocking Peptides](#)
- [Dot Blot](#)
- [Immunohistochemistry](#)
- [Immunofluorescence](#)
- [Immunoprecipitation](#)
- [Flow Cytometry](#)
- [Cell Culture](#)

**Anti-HUMAN SERUM ALBUMIN (RABBIT) Antibody Biotin Conjugated - Images**



Western Blot of Rabbit anti-Human Serum Albumin Antibody Biotin Conjugated. Lane 1: Human Serum Albumin. Load: 50 ng per lane. Primary antibody: Rabbit anti-Human Serum Albumin Antibody Biotin Conjugated at 1:1,000 overnight at 4°C. Secondary antibody: HRP Streptavidin secondary antibody at 1:40,000 for 30 min at RT. Block: MB-070 for 30 min at RT. Predicted/Observed size: 66 kDa, 60 kDa for Human Serum Albumin.

### **Anti-HUMAN SERUM ALBUMIN (RABBIT) Antibody Biotin Conjugated - Background**

HUMAN SERUM ALBUMIN Antibody Biotin Conjugated, is the most abundant protein in human blood plasma. It is produced in the liver. Albumin constitutes about half of the blood serum protein. It is soluble and monomeric. Human serum albumin functions to maintain oncotic pressure, transports thyroid hormones, transport fat-soluble hormones, transport fatty acids to the liver, and transport unconjugated bilirubin. Anti-BSA antibody is suitable for immunological and cardiovascular research.