

**Anti-STAT5 [Asym-dimethyl Arg31] (RABBIT) Antibody**  
**STAT5 R31-Me2a Antibody**  
**Catalog # ASR5535**

**Specification**

**Anti-STAT5 [Asym-dimethyl Arg31] (RABBIT) Antibody - Product Information**

Host	Rabbit
Conjugate	Unconjugated
Target Species	Human
Reactivity	Human
Clonality	Polyclonal
Application	WB, E, I, LCI
Application Note	Anti-STAT5 [Asym-dimethyl Arg31] antibody has been tested by Dot Blot and is useful for Western Blot. Specific conditions for reactivity should be optimized by the end user. Expect a band approximately ~90.6 kDa corresponding to STAT5 protein by Western Blotting in the appropriate cell lysate or extract.
Physical State	Liquid (sterile filtered)
Buffer	0.02 M Potassium Phosphate, 0.15 M Sodium Chloride, pH 7.2
Immunogen	STAT5A [Asym-dimethyl Arg31] affinity purified antibody was prepared from whole rabbit serum produced by repeated immunizations with a synthetic monomethylated peptide surrounding Arginine 31 of human STAT.
Stabilizer	30% Glycerol
Preservative	0.05% (w/v) Sodium Azide

**Anti-STAT5 [Asym-dimethyl Arg31] (RABBIT) Antibody - Additional Information**

**Gene ID** 6776

**Purity**

Anti-STAT5 R31/Me2a was affinity purified from monospecific antiserum by immunoaffinity chromatography. This antibody is specific for STAT5 R31/Me2a reacts with human STAT5. A BLAST analysis was used to suggest cross-reactivity with Human, mouse, and rat. Cross-reactivity with STAT5 from other sources has not been determined.

**Storage Condition**

Store vial at -20° C prior to opening. Aliquot contents and freeze at -20° C or below for extended storage. Avoid cycles of freezing and thawing. Centrifuge product if not completely clear after standing at room temperature. This product is stable for several weeks at 4° C as an undiluted liquid. Dilute only prior to immediate use.

**Precautions Note**

This product is for research use only and is not intended for therapeutic or diagnostic applications.

## Anti-STAT5 [Asym-dimethyl Arg31] (RABBIT) Antibody - Protein Information

**Name** STAT5A

**Synonyms** STAT5

### Function

Carries out a dual function: signal transduction and activation of transcription. Mediates cellular responses to the cytokine KITLG/SCF and other growth factors. Mediates cellular responses to ERBB4. May mediate cellular responses to activated FGFR1, FGFR2, FGFR3 and FGFR4. Binds to the GAS element and activates PRL- induced transcription. Regulates the expression of milk proteins during lactation.

### Cellular Location

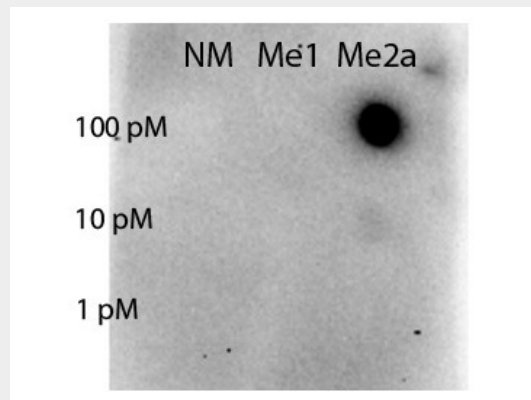
Cytoplasm. Nucleus. Note=Translocated into the nucleus in response to phosphorylation

## Anti-STAT5 [Asym-dimethyl Arg31] (RABBIT) Antibody - Protocols

Provided below are standard protocols that you may find useful for product applications.

- [Western Blot](#)
- [Blocking Peptides](#)
- [Dot Blot](#)
- [Immunohistochemistry](#)
- [Immunofluorescence](#)
- [Immunoprecipitation](#)
- [Flow Cytometry](#)
- [Cell Culture](#)

## Anti-STAT5 [Asym-dimethyl Arg31] (RABBIT) Antibody - Images



Dot blot of Rabbit Anti-STAT5 R31-Me2a antibody. Antigen: non-modified, monomethylated and asymmetric dimethylated forms of the immunizing peptide. Load: 100, 10, or 1 picomolar as indicated. Primary antibody: STAT5 R31-Me2a antibody at 1:1000 for 90 min at RT. (Date: 11/04/14; Exposure time: 82 seconds)

## Anti-STAT5 [Asym-dimethyl Arg31] (RABBIT) Antibody - Background

Signal transducer and activator of transcription 5 (Stat5) belongs to a family of cytoplasmic

transcription factors that can be activated (phosphorylated) by a cell surface receptor. Phosphorylation at Tyr694 is obligatory for Stat5 activation. Stat5 has two isoforms, Stat5a and Stat5b. Aberrant Stat5 activation has been implicated in the pathogenesis of chronic myelogenous leukemia, prostate and breast cancer and tumor metastasis. Stat5 is localized in the cytoplasm and upon phosphorylation at Y694 is translocated to the nucleus.