

Anti-Alga PCNA [RABBIT] Antibody
PCNA Antibody
Catalog # ASR5323

Specification

Anti-Alga PCNA [RABBIT] Antibody - Product Information

Host	Rabbit
Conjugate	Unconjugated
Target Species	Isochrysis galbana
Clonality	Polyclonal
Application	WB, E, IP, I, LCI
Application Note	This affinity purified antibody has been tested for use in ELISA and western blot. Specific conditions for reactivity should be optimized by the end user. Expect a band at ~29 kDa in size corresponding to PCNA by western blotting in the appropriate cell lysate or extract.
Physical State	Liquid (sterile filtered)
Buffer	0.02 M Potassium Phosphate, 0.15 M Sodium Chloride, pH 7.2
Immunogen	This affinity-purified antibody was prepared from whole rabbit serum produced by repeated immunizations with a synthetic peptide corresponding to an internal region near amino acids 50-75 of Isochrysis galbana PCNA.
Preservative	0.01% (w/v) Sodium Azide

Anti-Alga PCNA [RABBIT] Antibody - Additional Information

Purity

This affinity purified antibody is directed against algal PCNA. The product was affinity purified from monospecific antiserum by immunoaffinity purification. A BLAST analysis was used to suggest that this antibody would react with PCNA from the following alga sources: Prorocentrum minimum, Tetraselmis chui, Pleurochrysis carterae and Isochrysis galbana. Expect partial reactivity with PCNA from other alga sources as well as carrot, tobacco, peas, soybean and rice based on partial protein sequence homology. Species that have been tested but yielded no positive results are Pfiesteria piscicida, Emiliana huxleyi, Akashiwo sanguinea, Rhodomonas sp., Karlodinium micrum, and Skletonema costatum. Reactivity with PCNA from other sources has not been determined.

Storage Condition

Store vial at -20° C prior to opening. Aliquot contents and freeze at -20° C or below for extended storage. Avoid cycles of freezing and thawing. Centrifuge product if not completely clear after standing at room temperature. This product is stable for several weeks at 4° C as an undiluted liquid. Dilute only prior to immediate use.

Precautions Note

This product is for research use only and is not intended for therapeutic or diagnostic applications.

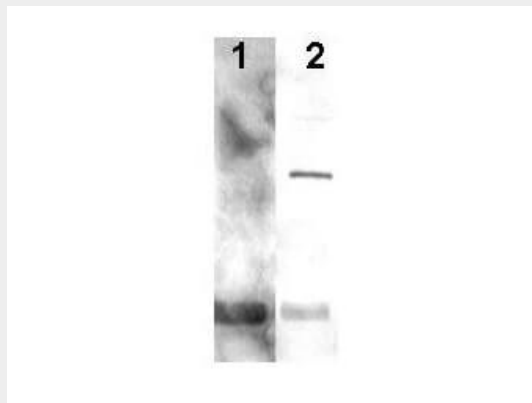
Anti-Alga PCNA [RABBIT] Antibody - Protein Information

Anti-Alga PCNA [RABBIT] Antibody - Protocols

Provided below are standard protocols that you may find useful for product applications.

- [Western Blot](#)
- [Blocking Peptides](#)
- [Dot Blot](#)
- [Immunohistochemistry](#)
- [Immunofluorescence](#)
- [Immunoprecipitation](#)
- [Flow Cytometry](#)
- [Cell Culture](#)

Anti-Alga PCNA [RABBIT] Antibody - Images



Western blot using Rockland's Affinity Purified anti-Alga PCNA antibody shows detection of a predominant band at ~29 kDa corresponding to PCNA (lane 2). Peptide competition effectively eliminates specific band reactivity (lane 1). For peptide competition, the antibody was pre-incubated with 100 μ g (excess) of the peptide for 2h at 37° C followed by overnight incubation at 4 °C with 100 μ g (excess) of the peptide, followed by a brief centrifugation and then reaction with the membrane. Each lane contains a lysate from 10⁵ cells from the marine dinoflagellate *Prorocentrum minimum*. Cells were separated by SDS-PAGE and transferred onto nitrocellulose using standard techniques. After blocking the membrane was probed with the primary antibody diluted to 1:200. Incubation was followed by washes and reaction with HRP Gt-a-Rabbit IgG [H&L] MX (611-103-122). Detection was by ECL using a 30 sec exposure time. Other detection systems will yield similar results. Personnel Communication. S. Lin, U.Conn.

Anti-Alga PCNA [RABBIT] Antibody - Background

PCNA, or Proliferating Cell Nuclear Antigen, is an auxiliary protein of DNA polymerase delta and is involved in the control of eukaryotic DNA replication by increasing the polymerase's processibility during elongation of the leading strand. PCNA is a nuclear protein.