

Anti-Gli2 (RABBIT) Antibody
Gli2 Antibody
Catalog # ASR5283**Specification**

Anti-Gli2 (RABBIT) Antibody - Product Information

Host	Rabbit
Conjugate	Unconjugated
Target Species	Mouse
Reactivity	Mouse
Clonality	Polyclonal
Application	WB, IHC, E, I, LCI
Application Note	This antibody has been tested for use in ELISA, immunohistochemistry and western blot. Specific conditions for reactivity should be optimized by the end user. See figure legend for expectations by WB and IHC. Multiple splice variants have been reported for this protein.
Physical State	Liquid (sterile filtered)
Buffer	0.02 M Potassium Phosphate, 0.15 M Sodium Chloride, pH 7.2
Immunogen	This affinity purified antibody was prepared from whole rabbit serum produced by repeated immunizations with a synthetic peptide corresponding to amino acids from an internal region of Mouse Gli-2.
Preservative	0.01% (w/v) Sodium Azide

Anti-Gli2 (RABBIT) Antibody - Additional Information**Other Names**
14633**Purity**

This affinity purified antibody is directed against mouse Gli-2 protein. The product was affinity purified from monospecific antiserum by immunoaffinity chromatography. A BLAST analysis was used to suggest cross-reactivity with Gli-2 from mouse and rat sources based on 100% sequence homology with the immunogen. Reactivity with Gli-2 from other sources is not known.

Storage Condition

Store vial at -20° C prior to opening. Aliquot contents and freeze at -20° C or below for extended storage. Avoid cycles of freezing and thawing. Centrifuge product if not completely clear after standing at room temperature. This product is stable for several weeks at 4° C as an undiluted liquid. Dilute only prior to immediate use.

Precautions Note

This product is for research use only and is not intended for therapeutic or diagnostic applications.

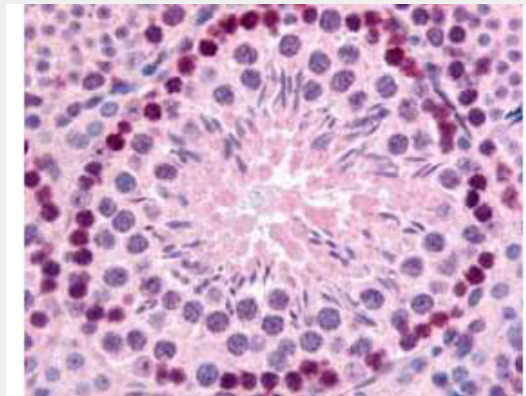
Anti-Gli2 (RABBIT) Antibody - Protein Information

Anti-Gli2 (RABBIT) Antibody - Protocols

Provided below are standard protocols that you may find useful for product applications.

- [Western Blot](#)
- [Blocking Peptides](#)
- [Dot Blot](#)
- [Immunohistochemistry](#)
- [Immunofluorescence](#)
- [Immunoprecipitation](#)
- [Flow Cytometry](#)
- [Cell Culture](#)

Anti-Gli2 (RABBIT) Antibody - Images



Rockland's Affinity Purified anti-mouse Gli-2 antibody was used at 10 µg/ml to evaluate staining on several mouse tissues. Moderate to strong staining was seen on many tissues, with low background staining. This image shows Gli-2 staining of mouse testis. Tissue was formalin-fixed and paraffin embedded.

Anti-Gli2 (RABBIT) Antibody - Background

Gli-2 (also known as Zinc Finger Protein Gli-2, GLI-Kruppel family member GLI-2 or Tax helper protein) belongs to the C2H2-type zinc finger protein subclass of the Gli family. Members of this subclass are characterized as transcription factors that bind DNA through zinc finger motifs. These motifs contain conserved H-C links. Gli family zinc finger proteins are mediators of Sonic hedgehog (Shh) signaling, and they are implicated as potent oncogenes in the embryonal carcinoma cell. The protein encoded by this gene localizes to the cytoplasm and activates patched Drosophila homolog (PTCH) gene expression. Gli-2 is also thought to play a role during embryogenesis. The encoded protein is associated with several phenotypes: Greig cephalopolysyndactyly syndrome, Pallister-Hall syndrome, pre-axial polydactyly type IV, and postaxial polydactyly types A1 and B. Anti-Gli 2 Antibody is useful for researchers interested in transcription factor activities, DNA binding, and chromatin binding research.