

Anti-ROBO-1 (RABBIT) Antibody
ROBO-1 Antibody
Catalog # ASR5279**Specification**

Anti-ROBO-1 (RABBIT) Antibody - Product Information

Host	Rabbit
Conjugate	Unconjugated
Target Species	Human
Reactivity	Human, Mouse
Clonality	Polyclonal
Application	WB, IHC, E, IP, I, LCI
Application Note	This affinity purified antibody has been tested for use in ELISA, western blot, and immunohistochemistry. It may be suitable for immunofluorescence and IP. Specific conditions for reactivity should be optimized by the end user. Expect a band at ~181 kDa in size corresponding to ROBO-1 by western blotting in the appropriate cell lysate or extract.
Physical State	Liquid (sterile filtered)
Buffer	0.02 M Potassium Phosphate, 0.15 M Sodium Chloride, pH 7.2
Immunogen	This affinity-purified antibody was prepared from whole rabbit serum produced by repeated immunizations with a synthetic peptide corresponding to an C-Terminal region near amino acids 1625-1650 of Human ROBO-1.
Preservative	0.01% (w/v) Sodium Azide

Anti-ROBO-1 (RABBIT) Antibody - Additional Information**Other Names**

6091

Purity

This affinity purified antibody is directed against human ROBO-1 protein. The product was affinity purified from monospecific antiserum by immunoaffinity purification. A BLAST analysis was used to suggest reactivity with this protein from human, mouse, rat and dog sources based on 100% homology for the immunogen sequence. Cross reactivity will occur with all isoforms of ROBO-1. Cross reactivity with ROBO-1 homologues from other sources has not been determined.

Storage Condition

Store vial at -20° C prior to opening. Aliquot contents and freeze at -20° C or below for extended storage. Avoid cycles of freezing and thawing. Centrifuge product if not completely clear after standing at room temperature. This product is stable for several weeks at 4° C as an undiluted liquid. Dilute only prior to immediate use.

Precautions Note

This product is for research use only and is not intended for therapeutic or diagnostic applications.

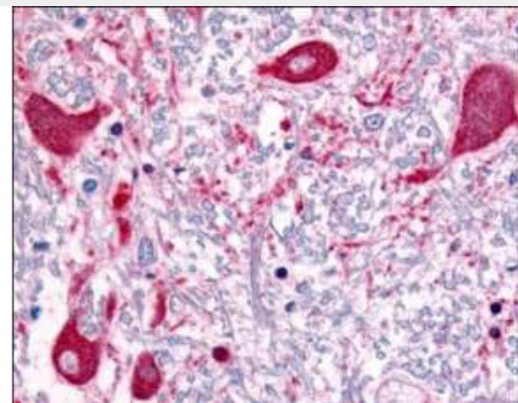
Anti-ROBO-1 (RABBIT) Antibody - Protein Information

Anti-ROBO-1 (RABBIT) Antibody - Protocols

Provided below are standard protocols that you may find useful for product applications.

- [Western Blot](#)
- [Blocking Peptides](#)
- [Dot Blot](#)
- [Immunohistochemistry](#)
- [Immunofluorescence](#)
- [Immunoprecipitation](#)
- [Flow Cytometry](#)
- [Cell Culture](#)

Anti-ROBO-1 (RABBIT) Antibody - Images



Rockland's Affinity Purified anti-ROBO1 antibody was used at a concentration of 5 $\mu\text{g/ml}$ to detect ROBO1 in a variety of tissues including multi-human, multi-brain and multi-cancer slides. This image shows staining of human brain tissue. Tissue was formalin-fixed and paraffin embedded. Personal Communication, Tina Roush, LifeSpanBiosciences, Seattle, WA.

Anti-ROBO-1 (RABBIT) Antibody - Background

ROBO-1 (also called Roundabout homolog 1 precursor and Deleted in U twenty twenty (DUTT)) functions as a receptor for SLIT1 and SLIT2. The SLIT proteins are thought to act as a molecular guidance cue in cellular migration, including axonal navigation at the ventral midline of the neural tube and projection of axons to different regions during neuronal development. In axon growth cones, the silencing of the attractive effect of NTN1 by SLIT2 may require the formation of a ROBO1-DCC complex. ROBO-1 may also be required for lung development. ROBO-1 is a type I membrane protein. ROBO-1 is a widely expressed protein with the exception of the kidney. Defects in ROBO1 may be a cause of breast and lung cancer. ROBO-1 maps within a region of overlapping homozygous deletions characterized in both small cell lung cancer cell lines (SCLC) and in a breast cancer cell line. Multiple splice variants have been identified for this protein.