

**Anti-HUS1B (RABBIT) Antibody**  
**HUS1B Antibody**  
**Catalog # ASR5262****Specification**

---

**Anti-HUS1B (RABBIT) Antibody - Product Information**

Host	Rabbit
Conjugate	Unconjugated
Target Species	Human
Reactivity	Human
Clonality	Polyclonal
Application	WB, E, IP, I, LCI
Application Note	Anti-HUS1B antibody has been tested for use in ELISA and western blot. Specific conditions for reactivity should be optimized by the end user. Expect a band approximately 38 kDa in size corresponding to Hus1B protein by western blotting in the appropriate cell lysate or extract.
Physical State	Liquid (sterile filtered)
Buffer	0.02 M Potassium Phosphate, 0.15 M Sodium Chloride, pH 7.2
Immunogen	This affinity purified antibody was prepared from whole rabbit serum produced by repeated immunizations with a synthetic peptide corresponding to an internal region near amino acids 100-125 of human Hus1B protein.
Preservative	0.01% (w/v) Sodium Azide

**Anti-HUS1B (RABBIT) Antibody - Additional Information****Gene ID** 135458**Other Names**  
135458**Purity**

This affinity-purified antibody is directed against human Hus1B protein. The product was affinity purified from monospecific antiserum by immunoaffinity purification. A BLAST analysis indicates 100% homology of the immunizing sequence with Hus1B protein from human. Partial reactivity with mouse Hus1B is not likely based on low (~64%, 9/14) sequence homology. Reactivity against homologues from other sources is not known.

**Storage Condition**

Store vial at -20° C prior to opening. Aliquot contents and freeze at -20° C or below for extended storage. Avoid cycles of freezing and thawing. Centrifuge product if not completely clear after standing at room temperature. This product is stable for several weeks at 4° C as an undiluted liquid. Dilute only prior to immediate use.

### Precautions Note

This product is for research use only and is not intended for therapeutic or diagnostic applications.

### Anti-HUS1B (RABBIT) Antibody - Protein Information

**Name** HUS1B

#### Tissue Location

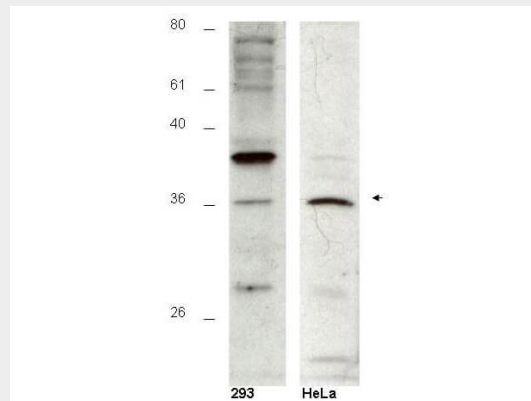
Expressed strongly in testis, less in spleen, thymus, prostate, colon and leukocytes.

### Anti-HUS1B (RABBIT) Antibody - Protocols

Provided below are standard protocols that you may find useful for product applications.

- [Western Blot](#)
- [Blocking Peptides](#)
- [Dot Blot](#)
- [Immunohistochemistry](#)
- [Immunofluorescence](#)
- [Immunoprecipitation](#)
- [Flow Cytometry](#)
- [Cell Culture](#)

### Anti-HUS1B (RABBIT) Antibody - Images



Western blot using Rockland's affinity purified anti-Hus1B antibody shows detection of a 36kDa band [arrow] corresponding to Hus1B in a HeLa cell lysate (p/n W09-000-364). The staining pattern in 293 cells (p/n W09-000-365) is less clear, showing a predominant band at 39 kDa. Personal Communication, A-Lien Lu-Chang, U. Maryland, Baltimore, MD.

### Anti-HUS1B (RABBIT) Antibody - Background

The protein encoded by the Hus1B gene is most closely related to HUS1, a component of a cell cycle checkpoint protein complex involved in cell cycle arrest in response to DNA damage. This protein can interact with the checkpoint protein RAD1 but not with RAD9. Over expression of this protein has been shown to induce cell death, which suggests a related but distinct role of this protein, as compared to HUS1. Hus1B is expressed strongly in testis, less in spleen, thymus, prostate, colon and leukocytes. Anti-HUS1B Antibody is useful for researchers interested in DNA damage and repair.