

Anti-KLH (RABBIT) Antibody
KLH Antibody
Catalog # ASR5242

Specification

Anti-KLH (RABBIT) Antibody - Product Information

Host	Rabbit
Conjugate	Unconjugated
Clonality	Polyclonal
Application	WB, IHC, E, I, LCI
Application Note	Anti-KLH Antibody has been tested for western blotting to detect a single band of the expected apparent molecular weight and for ELISA. Researchers should determine optimal titers for applications that are not stated below.
Physical State	Liquid (sterile filtered)
Buffer	0.02 M Potassium Phosphate, 0.15 M Sodium Chloride, pH 7.2
Immunogen	KLH (Keyhole Limpet Hemocyanin)
Preservative	0.01% (w/v) Sodium Azide

Anti-KLH (RABBIT) Antibody - Additional Information

Purity

Anti-KLH antibody was prepared from monospecific antiserum by immunoaffinity chromatography using KLH coupled to agarose beads followed by solid phase adsorption(s) to remove any unwanted reactivities. Assay by immunoelectrophoresis resulted in a single precipitin arc against anti-Rabbit Serum and KLH.

Storage Condition

Store KLH antibody at 4° C prior to opening. Aliquot contents and freeze at -20° C or below for extended storage. Avoid cycles of freezing and thawing. Centrifuge product if not completely clear after standing at room temperature. This product is stable for several weeks at 4° C as an undiluted liquid. Dilute only prior to immediate use.

Precautions Note

This product is for research use only and is not intended for therapeutic or diagnostic applications.

Anti-KLH (RABBIT) Antibody - Protein Information

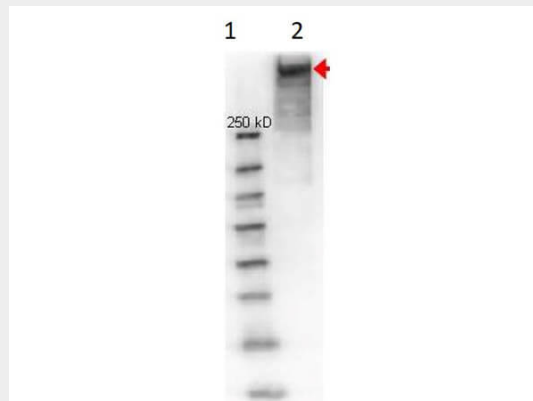
Anti-KLH (RABBIT) Antibody - Protocols

Provided below are standard protocols that you may find useful for product applications.

- [Western Blot](#)

- [Blocking Peptides](#)
- [Dot Blot](#)
- [Immunohistochemistry](#)
- [Immunofluorescence](#)
- [Immunoprecipitation](#)
- [Flow Cytometry](#)
- [Cell Culture](#)

Anti-KLH (RABBIT) Antibody - Images



Western Blot of Rabbit anti-KLH antibody. Lane 1: Molecular Weight Marker. Lane 2: KLH. Load: 10 μ g. Primary antibody: Anti-KLH at 1:1000 in 1% BSA-TBS, overnight at 4°C. Secondary antibody: HRP rabbit secondary antibody at 1:40,000 for 45 min at RT. Block: 1% BSA-TTBS for 30 min RT. Predicted/Observed size: ~350-390 kDa for KLH.

Anti-KLH (RABBIT) Antibody - Background

KLH Antibody detects Keyhole Limpet Hemocyanin protein which is a very large, heterogeneous glycosylated protein consisting of subunits with a molecular weight of 350,000 and 390,000. KLH readily forms aggregates with molecular weights of 4,500,000-13,000,000 daltons. Each domain of a KLH subunit contains two copper atoms that together bind a single oxygen molecule (O₂). When oxygen is bound to hemocyanin, the molecule takes on a distinctive transparent, opalescent blue color. The KLH protein is potentially immunogenic yet safe in humans and is therefore highly prized as a vaccine carrier protein. The large and highly glycosylated KLH protein cannot be reproduced synthetically. It is available only as a purified biological product from the Keyhole Limpet *Megathura crenulata*. KLH is being tested in a variety of cancer vaccines, including non-Hodgkins lymphoma, cutaneous melanoma, breast and bladder cancer.