

**Anti-RFA2 pan reactive (RABBIT) Antibody**  
**RFA2 Antibody**  
**Catalog # ASR5231**

**Specification**

---

**Anti-RFA2 pan reactive (RABBIT) Antibody - Product Information**

Host	Rabbit
Conjugate	Unconjugated
Target Species	Yeast
Reactivity	Yeast
Clonality	Polyclonal
Application	WB, E, IP, I, LCI
Application Note	This affinity-purified antibody was tested for use in western blotting against RFA2 containing cell lysates and by ELISA against the immunizing peptide. Reactivity in other immunoassays is unknown.
Physical State	Liquid (sterile filtered)
Buffer	0.02 M Potassium Phosphate, 0.15 M Sodium Chloride, pH 7.2
Immunogen	This affinity purified antibody was prepared from whole rabbit serum produced by repeated immunizations with a synthetic peptide corresponding to an internal region near aa 110-135 (of 273) of yeast DNA Replication Factor A (RFA2). The RFA complex consists of a heterotrimer of RFA1, RFA2 and RFA3, 69, 36 and 13 kda chains respectively. Yeast RFA2 is phosphorylated at the G <sub>1</sub> /S transition and is dephosphorylated at mitosis.
Preservative	0.01% (w/v) Sodium Azide

**Anti-RFA2 pan reactive (RABBIT) Antibody - Additional Information**

**Gene ID** 855404

**Other Names**  
855404

**Purity**

This affinity purified antibody is directed against yeast RFA2. The product was affinity purified from monospecific antiserum by immunoaffinity purification. Antiserum was purified against the phosphorylated form of the immunizing peptide and then cross adsorbed against the non-phosphorylated form of the peptide. This antibody consists of antibodies eluted from the non-phospho peptide column.

**Storage Condition**

Store vial at -20° C prior to opening. Aliquot contents and freeze at -20° C or below for extended

storage. Avoid cycles of freezing and thawing. Centrifuge product if not completely clear after standing at room temperature. This product is stable for several weeks at 4° C as an undiluted liquid. Dilute only prior to immediate use.

#### Precautions Note

This product is for research use only and is not intended for therapeutic or diagnostic applications.

### Anti-RFA2 pan reactive (RABBIT) Antibody - Protein Information

**Name** RFA2

**Synonyms** BUF1

#### Function

Binds to single-stranded sequences participating in DNA replication in addition to those mediating transcriptional repression (URS1) and activation (CAR1). Stimulates the activity of a cognate strand exchange protein (SEP1). It cooperates with T-AG and DNA topoisomerase I to unwind template DNA containing the simian virus 40 origin of DNA replication.

#### Cellular Location

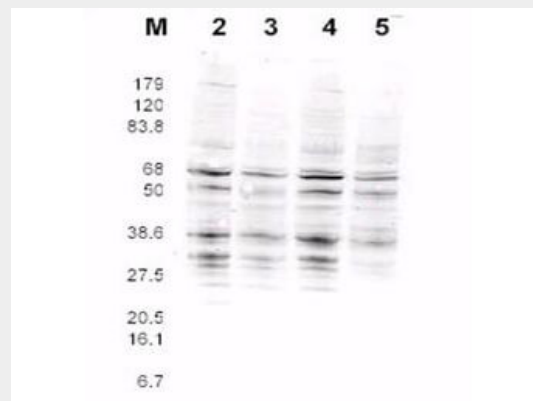
Nucleus.

### Anti-RFA2 pan reactive (RABBIT) Antibody - Protocols

Provided below are standard protocols that you may find useful for product applications.

- [Western Blot](#)
- [Blocking Peptides](#)
- [Dot Blot](#)
- [Immunohistochemistry](#)
- [Immunofluorescence](#)
- [Immunoprecipitation](#)
- [Flow Cytometry](#)
- [Cell Culture](#)

### Anti-RFA2 pan reactive (RABBIT) Antibody - Images



This product was assayed by western blotting against RFA2 containing cell lysates. Blot incubated for 1 hr at RT with affinity purified Rabbit anti RFA2 pan reactive Lot 13229 at 1.0 ug/ml followed

by 1:5000 dilution of IRDye800 Sheep anti Rabbit IgG (lot 13218) for 1 hr at RT.

**Anti-RFA2 pan reactive (RABBIT) Antibody - Background**

RFA2 binds to single-stranded sequences participating in DNA replication in addition to those mediating transcriptional repression (URS1) and activation (CAR1). It stimulates the activity of a cognate strand exchange protein (SEP1). It cooperates with T-AG and DNA topoisomerase I to unwind template DNA containing the simian virus 40 origin of DNA replication.