

**Anti-PhosphoSerine (pS) (RABBIT) Antibody**  
**Phosphoserine Antibody**  
**Catalog # ASR5173****Specification**

---

**Anti-PhosphoSerine (pS) (RABBIT) Antibody - Product Information**

Host	Rabbit
Conjugate	Unconjugated
Reactivity	Mouse
Clonality	Polyclonal
Application	WB, IHC, E, IP, I, LCI
Application Note	Phosphoserine Antibody is tested for use in ELISA, western blotting, Immunohistochemistry-P, and immunoprecipitation assays. The antibody reacts specifically with phosphoserine and shows minimal reactivity by ELISA and western blotting with proteins containing phosphotyrosine or phosphothreonine residues. The antibody reacts with free phosphoserine, phosphoserine conjugated to carriers such as thyroglobulin or BSA, and detects the presence of phosphoserine in proteins of both unstimulated and stimulated cell lysates. Although not tested, this antibody is likely functional in RIA and flow cytometry.
Physical State	Liquid (sterile filtered)
Buffer	0.02 M Potassium Phosphate, 0.15 M Sodium Chloride, pH 7.2
Immunogen	Phosphoserine Antibody was prepared from whole rabbit serum produced by repeated immunizations with phosphoserine conjugated KLH.
Stabilizer	50% (v/v) Glycerol

**Anti-PhosphoSerine (pS) (RABBIT) Antibody - Additional Information****Purity**

Anti-Phosphoserine Antibody was prepared from monospecific antiserum by immunoaffinity chromatography using phosphorylated serine peptide coupled to agarose. Assay by immunoelectrophoresis resulted in a single precipitin arc against anti-Rabbit IgG. Reactivity is specific for phosphoserine and minimal cross-reactivity is observed against phosphotyrosine or phosphothreonine.

**Storage Condition**

Store vial at -20° C prior to opening. Aliquot contents and freeze at -20° C or below for extended storage. Avoid cycles of freezing and thawing. Centrifuge product if not completely clear after standing at room temperature. This product is stable for several weeks at 4° C as an undiluted liquid. Dilute only prior to immediate use.

### Precautions Note

This product is for research use only and is not intended for therapeutic or diagnostic applications.

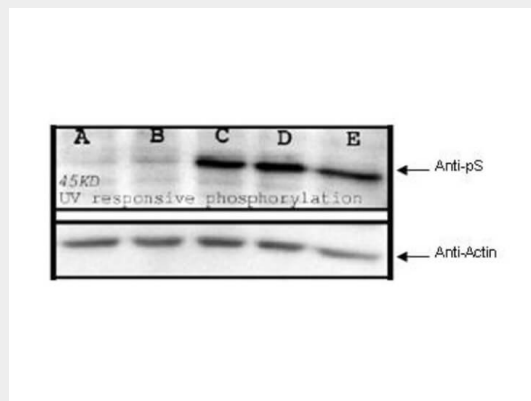
## Anti-PhosphoSerine (pS) (RABBIT) Antibody - Protein Information

### Anti-PhosphoSerine (pS) (RABBIT) Antibody - Protocols

Provided below are standard protocols that you may find useful for product applications.

- [Western Blot](#)
- [Blocking Peptides](#)
- [Dot Blot](#)
- [Immunohistochemistry](#)
- [Immunofluorescence](#)
- [Immunoprecipitation](#)
- [Flow Cytometry](#)
- [Cell Culture](#)

### Anti-PhosphoSerine (pS) (RABBIT) Antibody - Images



Rockland's Affinity Purified anti-phosphoserine (pS) antibody is shown to detect phosphorylated proteins present in UV-treated mouse spleen cell lysates (top panel).

### Anti-PhosphoSerine (pS) (RABBIT) Antibody - Background

Anti-Phosphoserine Antibody detects phosphorylated Serines. Serine is one of the proteinogenic amino acids. By virtue of the hydroxyl group, serine is classified as a polar amino acid. It is not essential to the human diet, since it is synthesized in the body from other metabolites, including glycine. Serine is important in metabolism in that it participates in the biosynthesis of purines and pyrimidines. It is the precursor to several amino acids including glycine and cysteine, and tryptophan in bacteria. It is also the precursor to numerous other metabolites, including sphingolipids and folate, which is the principal donor of one-carbon fragments in biosynthesis. Anti-phospho Serine Antibody is ideal for investigators involved in Cell Signaling, Neuroscience, Immunology, Cancer research and Signal Transduction research.