

Anti-HUMAN SERUM ALBUMIN (RABBIT) Antibody
Human Serum Albumin Antibody
Catalog # ASR5135**Specification**

Anti-HUMAN SERUM ALBUMIN (RABBIT) Antibody - Product Information

Host	Rabbit
Conjugate	Unconjugated
Target Species	Human
Reactivity	Human
Clonality	Polyclonal
Application	WB, IHC, E, I, LCI
Application Note	Anti-Human Serum Albumin Antibody has been tested by ELISA, dot blot, and western blot. This product is suitable for the detection of human serum albumin in blood and tissue samples. Antibody is suitable for western blotting to detect a single band of 67 kDa, the expected apparent molecular weight, and for use in ELISA. Researchers should determine optimal titers for applications that are not stated below.
Physical State	Liquid (sterile filtered)
Buffer	0.02 M Potassium Phosphate, 0.15 M Sodium Chloride, pH 7.2
Immunogen	Human Serum Albumin
Preservative	0.01% (w/v) Sodium Azide

Anti-HUMAN SERUM ALBUMIN (RABBIT) Antibody - Additional Information**Other Names**

213

Purity

Anti-Human Serum Albumin Antibody was prepared from monospecific antiserum by immunoaffinity chromatography using purified human serum albumin. Assay by immunoelectrophoresis resulted in a single precipitin arc against anti-Rabbit Serum. Analysis by SDS-PAGE was used to determine that this preparation is substantially free of aggregates and shows a banding pattern consistent with purified Rabbit IgG.

Storage Condition

Store vial at -20° C prior to opening. Aliquot contents and freeze at -20° C or below for extended storage. Avoid cycles of freezing and thawing. Centrifuge product if not completely clear after standing at room temperature. This product is stable for several weeks at 4° C as an undiluted liquid. Dilute only prior to immediate use.

Precautions Note

This product is for research use only and is not intended for therapeutic or diagnostic applications.

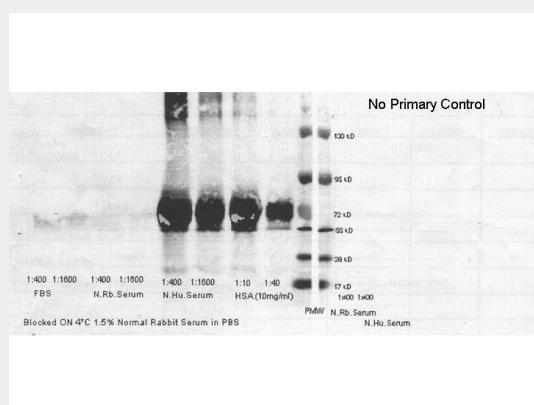
Anti-HUMAN SERUM ALBUMIN (RABBIT) Antibody - Protein Information

Anti-HUMAN SERUM ALBUMIN (RABBIT) Antibody - Protocols

Provided below are standard protocols that you may find useful for product applications.

- [Western Blot](#)
- [Blocking Peptides](#)
- [Dot Blot](#)
- [Immunohistochemistry](#)
- [Immunofluorescence](#)
- [Immunoprecipitation](#)

Anti-HUMAN SERUM ALBUMIN (RABBIT) Antibody - Images



Western Blot of human serum albumin. Lane 1: 1:400 of FBS. Lane 2: 1:1600 of FBS. Lane 3: 1:400 of normal rabbit serum. Lane 4: 1:1600 of normal rabbit serum. Lane 5: 1:400 of normal human serum. Lane 6: 1:1600 of normal human serum. Lane 7: 1:10 of human serum albumin (10mg/mL). Lane 8: 1:40 of human serum albumin (10mg/mL). Lane 9: molecular weight. Right Blot: Secondary only incubated for control. Primary antibody: human serum albumin at 1:400 for overnight at 4°C. Secondary antibody: Biotin conjugated rabbit anti human serum albumin with 10 mg/ml BSA added to stock was diluted 1:5000 in PBST for 2hrs at RT. DyLight 649 conjugated Streptavidin 1:50000 in PBST 1 hr RT was used as a secondary reagent. Block: 1.5 % rabbit serum overnight at 4°C.

Anti-HUMAN SERUM ALBUMIN (RABBIT) Antibody - Background

Anti-Human Serum Albumin Antibody detects serum albumin which is the most abundant protein in human blood plasma. Serum albumin is produced in the liver and constitutes about half of the blood serum protein. It is soluble and monomeric, and is shown to transport hormones, fatty acids, and other compounds, buffers pH, and maintains osmotic pressure, among other functions. Albumin is synthesized in the liver as preproalbumin, which has an N-terminal peptide that is removed before the nascent protein is released from the rough endoplasmic reticulum. The product, proalbumin, is in turn cleaved in the Golgi vesicles to produce the secreted albumin. The reference range for albumin concentrations in blood is 3.4 to 5.4 g/dL. Serum Albumin has a molecular mass of 67 kDa. This antibody is suitable for researchers in cardiovascular research, Serum Protein Component research, as well as general research.