

**Anti-BIOTIN (RABBIT) Antibody Rhodamine Conjugated**  
**Biotin Antibody Rhodamine Conjugated**  
**Catalog # ASR5132****Specification**

---

**Anti-BIOTIN (RABBIT) Antibody Rhodamine Conjugated - Product Information**

Host	Rabbit
Conjugate	Rhodamine (TRITC)
FP Value	1.7
Clonality	Polyclonal
Application	I, LCI
Application Note	Anti-Biotin Rhodamine Conjugated Antibody has been tested by western blot. This product is designed for immunofluorescence microscopy, fluorescence based plate assays (FLISA) and fluorescent western blotting. This product is also suitable for multiplex analysis, including multicolor imaging, utilizing various commercial platforms.
Physical State	Lyophilized
Buffer	0.02 M Potassium Phosphate, 0.15 M Sodium Chloride, pH 7.2
Immunogen	Biotin conjugated to Keyhole Limpet Hemocyanin (KLH)
Reconstitution Volume	100 µL
Reconstitution Buffer	Restore with deionized water (or equivalent)
Stabilizer	10 mg/mL Bovine Serum Albumin (BSA) - Immunoglobulin and Protease free
Preservative	0.01% (w/v) Sodium Azide

**Anti-BIOTIN (RABBIT) Antibody Rhodamine Conjugated - Additional Information****Purity**

This product was prepared from monospecific antiserum by immunoaffinity chromatography using Biotin coupled to sepharose beads. Assay by immunoelectrophoresis resulted in a single precipitin arc against anti-Rabbit Serum, Biotin conjugated IgG and Biotin conjugated Bovine Serum Albumin.

**Storage Condition**

Store vial at 4° C prior to restoration. For extended storage aliquot contents and freeze at -20° C or below. Avoid cycles of freezing and thawing. Centrifuge product if not completely clear after standing at room temperature. This product is stable for several weeks at 4° C as an undiluted liquid. Dilute only prior to immediate use.

**Precautions Note**

This product is for research use only and is not intended for therapeutic or diagnostic applications.

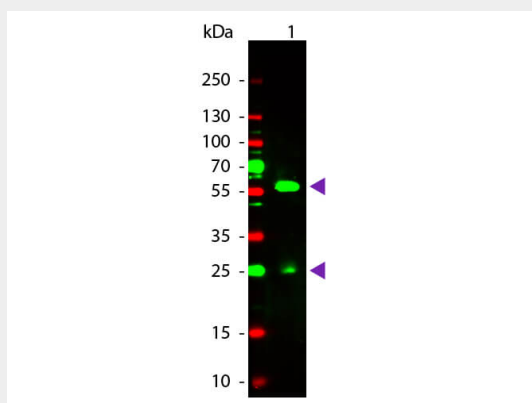
## Anti-BIOTIN (RABBIT) Antibody Rhodamine Conjugated - Protein Information

## Anti-BIOTIN (RABBIT) Antibody Rhodamine Conjugated - Protocols

Provided below are standard protocols that you may find useful for product applications.

- [Western Blot](#)
- [Blocking Peptides](#)
- [Dot Blot](#)
- [Immunohistochemistry](#)
- [Immunofluorescence](#)
- [Immunoprecipitation](#)
- [Flow Cytometry](#)
- [Cell Culture](#)

## Anti-BIOTIN (RABBIT) Antibody Rhodamine Conjugated - Images



Western Blot of Rabbit anti-Biotin Rhodamine Conjugated Antibody. Lane 1: Biotin Conjugated Guinea Pig IgG. Lane 2: None. Load: 50 ng per lane. Primary antibody: None. Secondary antibody: Rhodamine rabbit secondary antibody at 1:1,000 for 60 min at RT. Block: MB-070 for 30 min at RT. Predicted/Observed size: 28 & 55 kDa, 28 & 55 kDa for Guinea Pig IgG. Other band(s): None.

## Anti-BIOTIN (RABBIT) Antibody Rhodamine Conjugated - Background

Biotin Antibody detects Biotin. Biotin is a water-soluble B-complex vitamin (vitamin B7). It is composed of a ureido (tetrahydroimidazole) ring fused with a tetrahydrothiophene ring. A valeric acid substituent is attached to one of the carbon atoms of the tetrahydrothiophene ring. Biotin is a coenzyme for carboxylase enzymes, involved in the synthesis of fatty acids, isoleucine, and valine, and in gluconeogenesis. Biotin is necessary for cell growth, the production of fatty acids, and the metabolism of fats and amino acids. Anti-Biotin Antibody is ideal for investigators involved in Cell Signaling and Cell Biology research.