

**Anti-p33 ING1 (GOAT) Antibody**  
**p33ING1 Antibody**  
**Catalog # ASR5082****Specification**

---

**Anti-p33 ING1 (GOAT) Antibody - Product Information**

Host	Goat
Conjugate	Unconjugated
Target Species	Human
Reactivity	Human
Clonality	Polyclonal
Application	WB, E, I, LCI
Application Note	This affinity-purified antibody has been tested for use in ELISA and western blotting using over expressed cell lysates. Expect a band approximately 47 kDa, 33 kDa or 24 kDa in size corresponding to variants of ING1 by western blotting in the appropriate cell lysate or extract. Specific conditions for other applications should be optimized by the end user.
Physical State	Liquid (sterile filtered)
Buffer	0.02 M Potassium Phosphate, 0.15 M Sodium Chloride, pH 7.2
Immunogen	This affinity purified antibody was prepared from whole Goat serum produced by repeated immunizations with a synthetic peptide corresponding to an internal region near aa 275-300 of Human p33 ING1 protein (Inhibitor of growth family, member 1).
Preservative	0.01% (w/v) Sodium Azide

**Anti-p33 ING1 (GOAT) Antibody - Additional Information****Gene ID** 3621**Other Names**  
3621**Purity**

This is an affinity purified antibody produced by immunoaffinity chromatography using the immunizing peptide after immobilization to a solid phase. Reactivity occurs against human p33 ING1 protein and is 100% homologous to all splice variants for ING1. Cross reactivity with p33 ING1 protein from mouse and rat sources is expected based on high homology (one amino acid change in sequence) by BLAST. Reactivity with p33 ING1 proteins from other sources is not known.

**Storage Condition**

Store vial at -20° C prior to opening. Aliquot contents and freeze at -20° C or below for extended

storage. Avoid cycles of freezing and thawing. Centrifuge product if not completely clear after standing at room temperature. This product is stable for several weeks at 4° C as an undiluted liquid. Dilute only prior to immediate use.

#### Precautions Note

This product is for research use only and is not intended for therapeutic or diagnostic applications.

### Anti-p33 ING1 (GOAT) Antibody - Protein Information

**Name** ING1

#### Function

Cooperates with p53/TP53 in the negative regulatory pathway of cell growth by modulating p53-dependent transcriptional activation. Implicated as a tumor suppressor gene.

#### Cellular Location

Nucleus.

#### Tissue Location

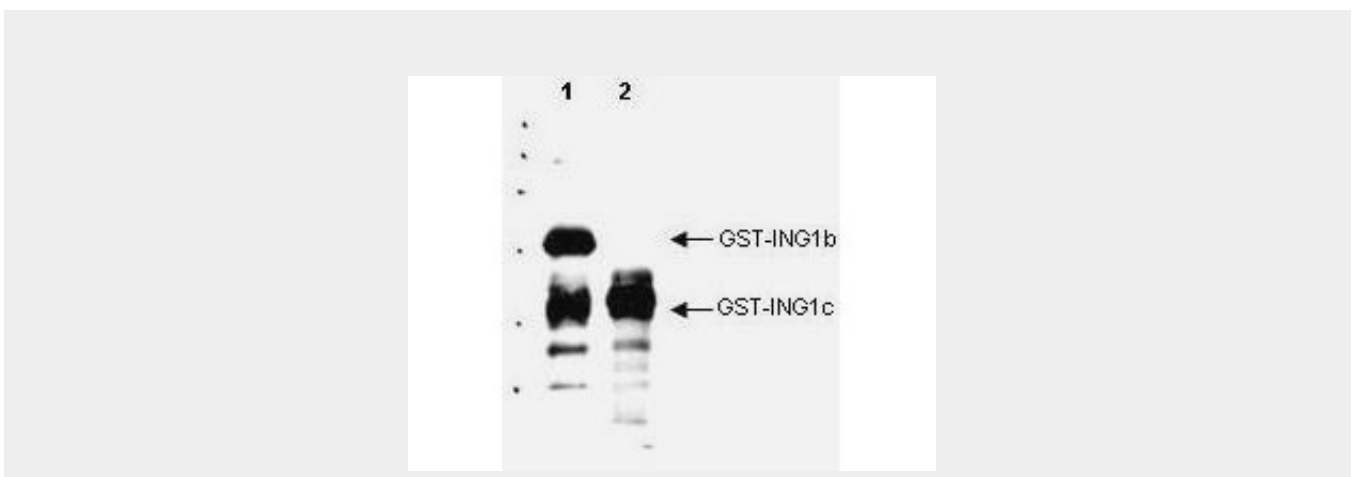
Isoform 2 was expressed in all normal tissues and cells examined, as well as in all breast cancer and melanoma cell lines examined. Isoform 3 was expressed in testis, liver, and kidney, weakly expressed in colon and brain and not expressed in breast and cultured melanocytes. Isoform 4 was highly expressed in testis and weakly expressed in brain, but not expressed in breast, colon, kidney, melanocytes, breast cancer or melanoma cell lines

### Anti-p33 ING1 (GOAT) Antibody - Protocols

Provided below are standard protocols that you may find useful for product applications.

- [Western Blot](#)
- [Blocking Peptides](#)
- [Dot Blot](#)
- [Immunohistochemistry](#)
- [Immunofluorescence](#)
- [Immunoprecipitation](#)
- [Flow Cytometry](#)
- [Cell Culture](#)

### Anti-p33 ING1 (GOAT) Antibody - Images



Western blot analysis is shown using Rockland's Affinity Purified anti-p33 ING1 antibody to detect over expressed Human ING1 present in cell nuclear extracts. This western blot shows reactivity with purified recombinant GST tagged human ING1b (lane 1, ~33kDa) and ING1c protein (lane 2, ~24kDa). No reactivity is seen against GST or other ING proteins (not shown). Reactivity of this polyclonal antibody is similar to the specificity of a positive control monoclonal antibody (not shown). The blot was incubated with a 1:1,000 dilution of the antibody at room temperature followed by detection using standard techniques. Personal communication Xiaolan Feng, U. Calgary.

#### **Anti-p33 ING1 (GOAT) Antibody - Background**

p33 ING1 is a tumor suppressor protein that can induce cell growth arrest and apoptosis. The encoded protein is a nuclear protein that physically interacts with the tumor suppressor protein TP53 and is a component of the p53-signaling pathway. Reduced expression and rearrangement of this gene have been detected in various cancers. Multiple alternatively spliced transcript variants encoding distinct isoforms have been reported. The accession number listed below is for variant (4) that encodes the longest isoform (D). Other synonyms for p33 ING1 include p33, p47, p33ING1, p24ING1c, p33ING1b, p47ING1a, growth inhibitor ING1, inhibitor of growth 1, tumor suppressor ING1 and growth inhibitory protein ING1.