

**Anti-NAG-1 (RABBIT) Antibody**  
**NAG-1 Antibody**  
**Catalog # ASR4929**

**Specification**

---

**Anti-NAG-1 (RABBIT) Antibody - Product Information**

Host	Rabbit
Conjugate	Unconjugated
Target Species	Human
Reactivity	Human, Mouse
Clonality	Polyclonal
Application	WB, E, I, LCI
Application Note	This Protein-A purified, MBP-cross-adsorbed NaG-1 antibody has been tested by ELISA and Western Blot of human and mouse NAG-1 protein. For detection of NAG-1 in human serum, a sandwich ELISA is suggested using this antibody in combination with anti-NAG-1/GDF15 C-terminal specific antibodies. This antibody is useful in dual antibody immunometric assays (EIA). Specific conditions for reactivity should be optimized by the end user. Expect bands in western blots of approximately 14 kDa in size corresponding to NAG-1 monomer using the appropriate cell lysate or extract.
Physical State	Liquid (sterile filtered)
Buffer	0.02 M Potassium Phosphate, 0.15 M Sodium Chloride, pH 7.2
Immunogen	This Protein-A purified antibody was prepared by repeated immunizations with an MBP-tagged recombinant protein produced in E.coli corresponding to mature human NAG-1 protein. Cross reactivity to MBP was removed via cross-adsorption chromatography.
Preservative	0.01% (w/v) Sodium Azide

**Anti-NAG-1 (RABBIT) Antibody - Additional Information**

**Gene ID** 9518

**Other Names**  
9518

**Purity**

This antibody reacts with endogenous NAG-1 protein from human tissues. A BLAST analysis using the immunizing recombinant protein suggests reactivity with NAG-1 from human and chimpanzee

based on 100% and 98% homology, respectively, and with macaque based on an 94% homology, and with mouse and rat based on 70% homology with the immunizing sequence. Cross-reactivity with NAG-1 from other sources has not been determined.

### Storage Condition

Store vial at -20° C prior to opening. Aliquot contents and freeze at -20° C or below for extended storage. Avoid cycles of freezing and thawing. Centrifuge product if not completely clear after standing at room temperature. This product is stable for several weeks at 4° C as an undiluted liquid. Dilute only prior to immediate use.

### Precautions Note

This product is for research use only and is not intended for therapeutic or diagnostic applications.

## Anti-NAG-1 (RABBIT) Antibody - Protein Information

**Name** GDF15 {ECO:0000303|PubMed:23468844, ECO:0000312|HGNC:HGNC:30142}

### Function

Hormone produced in response to various stresses to confer information about those stresses to the brain, and trigger an aversive response, characterized by nausea, vomiting, and/or loss of appetite (PubMed: <a href="http://www.uniprot.org/citations/23468844" target="\_blank">23468844</a>, PubMed: <a href="http://www.uniprot.org/citations/24971956" target="\_blank">24971956</a>, PubMed: <a href="http://www.uniprot.org/citations/28846097" target="\_blank">28846097</a>, PubMed: <a href="http://www.uniprot.org/citations/28846098" target="\_blank">28846098</a>, PubMed: <a href="http://www.uniprot.org/citations/28846099" target="\_blank">28846099</a>, PubMed: <a href="http://www.uniprot.org/citations/28953886" target="\_blank">28953886</a>, PubMed: <a href="http://www.uniprot.org/citations/29046435" target="\_blank">29046435</a>, PubMed: <a href="http://www.uniprot.org/citations/30639358" target="\_blank">30639358</a>, PubMed: <a href="http://www.uniprot.org/citations/31875646" target="\_blank">31875646</a>, PubMed: <a href="http://www.uniprot.org/citations/33589633" target="\_blank">33589633</a>, PubMed: <a href="http://www.uniprot.org/citations/38092039" target="\_blank">38092039</a>). The aversive response is both required to reduce continuing exposure to those stresses at the time of exposure and to promote avoidance behavior in the future (PubMed: <a href="http://www.uniprot.org/citations/30639358" target="\_blank">30639358</a>, PubMed: <a href="http://www.uniprot.org/citations/33589633" target="\_blank">33589633</a>, PubMed: <a href="http://www.uniprot.org/citations/38092039" target="\_blank">38092039</a>). Acts by binding to its receptor, GFRAL, activating GFRAL-expressing neurons localized in the area postrema and nucleus tractus solitarius of the brainstem (PubMed: <a href="http://www.uniprot.org/citations/28846097" target="\_blank">28846097</a>, PubMed: <a href="http://www.uniprot.org/citations/28846098" target="\_blank">28846098</a>, PubMed: <a href="http://www.uniprot.org/citations/28846099" target="\_blank">28846099</a>, PubMed: <a href="http://www.uniprot.org/citations/28953886" target="\_blank">28953886</a>, PubMed: <a href="http://www.uniprot.org/citations/31535977" target="\_blank">31535977</a>). It then triggers the activation of neurons localized within the parabrachial nucleus and central amygdala, which constitutes part of the 'emergency circuit' that shapes responses to stressful conditions (PubMed: <a href="http://www.uniprot.org/citations/28953886" target="\_blank">28953886</a>). The GDF15-GFRAL signal induces expression of genes involved in metabolism, such as lipid metabolism in adipose tissues (PubMed: <a href="http://www.uniprot.org/citations/31402172" target="\_blank">31402172</a>). Required for avoidance behavior in response to food allergens: induced downstream of mast cell activation to promote aversion and minimize harmful effects of exposure to noxious substances (By similarity). In addition to suppress appetite, also promotes weight loss by enhancing energy expenditure in muscle: acts by increasing calcium futile cycling in muscle (By similarity). Contributes to the effect of metformin, an anti-diabetic drug, on appetite reduction and weight loss: produced in the kidney in response to metformin treatment, thereby

activating the GDF15-GFRAL response, leading to reduced appetite and weight (PubMed:<a href="http://www.uniprot.org/citations/31875646" target="\_blank">31875646</a>, PubMed:<a href="http://www.uniprot.org/citations/37060902" target="\_blank">37060902</a>). The contribution of GDF15 to weight loss following metformin treatment is however limited and subject to discussion (PubMed:<a href="http://www.uniprot.org/citations/36001956" target="\_blank">36001956</a>). Produced in response to anticancer drugs, such as camptothecin or cisplatin, promoting nausea, vomiting and contributing to malnutrition (By similarity). Overproduced in many cancers, promoting anorexia in cancer (cachexia) (PubMed:<a href="http://www.uniprot.org/citations/32661391" target="\_blank">32661391</a>). Responsible for the risk of nausea and vomiting during pregnancy: high levels of GDF15 during pregnancy, mostly originating from the fetus, are associated with increased nausea and vomiting (PubMed:<a href="http://www.uniprot.org/citations/38092039" target="\_blank">38092039</a>). Maternal sensitivity to nausea is probably determined by pre-pregnancy exposure to GDF15, women with naturally high level of GDF15 being less susceptible to nausea than women with low levels of GDF15 before pregnancy (PubMed:<a href="http://www.uniprot.org/citations/38092039" target="\_blank">38092039</a>). Promotes metabolic adaptation in response to systemic inflammation caused by bacterial and viral infections in order to promote tissue tolerance and prevent tissue damage (PubMed:<a href="http://www.uniprot.org/citations/31402172" target="\_blank">31402172</a>). Required for tissue tolerance in response to myocardial infarction by acting as an inhibitor of leukocyte integrin activation, thereby protecting against cardiac rupture (By similarity). Inhibits growth hormone signaling on hepatocytes (By similarity).

#### Cellular Location

Secreted Note=Secreted in the plasma.

#### Tissue Location

Detected in plasma (at protein level) (PubMed:28572090, PubMed:29046435). Highly expressed in placenta, with lower levels in prostate and colon and some expression in kidney (PubMed:37060902, PubMed:9348093).

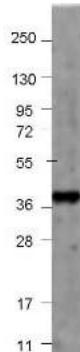
#### Anti-NAG-1 (RABBIT) Antibody - Protocols

Provided below are standard protocols that you may find useful for product applications.

- [Western Blot](#)
- [Blocking Peptides](#)
- [Dot Blot](#)
- [Immunohistochemistry](#)
- [Immunofluorescence](#)
- [Immunoprecipitation](#)
- [Flow Cytometry](#)
- [Cell Culture](#)

#### Anti-NAG-1 (RABBIT) Antibody - Images





Western blot using Rockland's affinity purified anti-Human NAG-1 antibody shows detection of a 42 kDa band corresponding to purified recombinant fusion protein MBP-human NAG-1. Samples were electrophoresed on a 4-20% gradient gel under reducing conditions. Primary antibody was used at 1:1000 in 1% BSA-TBST overnight at 4°C. DyLight649™ Goat Anti-Rabbit IgG secondary antibody (p/n 611-143-122) was used at 1:20,000 in Blocking Buffer for Fluorescent Western Blotting (MB-070) for 30 min at room temperature. Molecular weight estimation was made by comparison to prestained MW markers. Image was captured using the BioRad Versadoc™ 4000MP Imaging System. Other detection systems will yield similar results.

#### **Anti-NAG-1 (RABBIT) Antibody - Background**

Non-steroidal anti-inflammatory drug (NSAID) activated gene (NAG-1) is a member of the transforming growth factor-beta (TGF-beta) superfamily. NAG-1 is also known as Macrophage Inhibitory Cytokine-1 (MIC-1), Growth Differentiation Factor 15 (GDF15), Placental Bone Morphogenetic Protein (PLAB), or Prostate Derived Factor (PDF). NAG-1 is expressed in human placenta, prostate and colon. It possesses antitumorigenic and proapoptotic activities. NAG-1 expression is dramatically increased in inflammation, injury and malignancy. Increase of NAG-1 expression is a feature of many cancers including breast, colon, pancreas and prostate. In a number of studies, NAG-1 expression was increased by a number of NSAIDs. This increase in expression may correlate with the chemopreventive effect NSAIDs seem to have with certain cancers. NAG-1 expression is also induced by PPAR gamma ligands and by several dietary compounds such as conjugated linoleic acids (CLAs), naturally occurring fatty acids in ruminant food products, indoles, epicatechin gallate, and genistein. Induced expression of NAG-1 results in stimulation of apoptosis and inhibition of cell growth. Inhibition of NAG-1 induced expression by small interference RNA (siRNA) results in repression of induced apoptosis. NAG-1 expression is regulated by a number of transcription factors such as ERG-1 and Sp1. EGR-1 may be necessary for NSAID-induced NAG-1 expression. The study of expression of NAG-1 proteins, including variants, is important to define their potential role as serum biomarkers for cancer diagnosis, treatment monitoring, epidemiology study, and nutrition surveys.