

Anti-Low Molecular Weight E.Coli Protein Host Cell Protein (HCP) Antibody
LMW E.Coli Host Cell Protein Antibody
Catalog # ASR4479

Specification

Anti-Low Molecular Weight E.Coli Protein Host Cell Protein (HCP) Antibody - Product Information

Host	Rabbit
Conjugate	Unconjugated
Target Species	Escherichia coli
Reactivity	E. coli
Clonality	Polyclonal
Application	WB, E, I, LCI
Application Note	Anti-LMW Host Cell Proteins Antibody detects over 270 E.coli LMW proteins and has been tested by 2D-Page, western blotting, and ELISA.
Physical State	Liquid (sterile filtered)
Buffer	0.02 M Potassium Phosphate, 0.15 M Sodium Chloride, pH 7.2
Immunogen	Anti-LMW E.Coli Host Cell Proteins Antibody was prepared by repeated immunizations with a mixture low molecular weight (LMW) proteins from E.Coli (BL21).
Preservative	0.01% (w/v) Sodium Azide

Anti-Low Molecular Weight E.Coli Protein Host Cell Protein (HCP) Antibody - Additional Information

Purity

LMW Host Cell Protein A purified antibody is directed against low molecular weight E.coli Host Cell Proteins. The product was purified from monospecific antiserum by Protein A affinity chromatography.

Storage Condition

Store vial at -20° C prior to opening. Aliquot contents and freeze at -20° C or below for extended storage. Avoid cycles of freezing and thawing. Centrifuge product if not completely clear after standing at room temperature. This product is stable for several weeks at 4° C as an undiluted liquid. Dilute only prior to immediate use.

Precautions Note

This product is for research use only and is not intended for therapeutic or diagnostic applications.

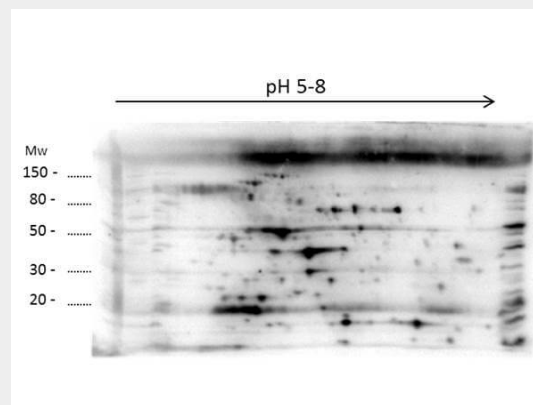
Anti-Low Molecular Weight E.Coli Protein Host Cell Protein (HCP) Antibody - Protein Information

Anti-Low Molecular Weight E.Coli Protein Host Cell Protein (HCP) Antibody - Protocols

Provided below are standard protocols that you may find useful for product applications.

- [Western Blot](#)
- [Blocking Peptides](#)
- [Dot Blot](#)
- [Immunohistochemistry](#)
- [Immunofluorescence](#)
- [Immunoprecipitation](#)
- [Flow Cytometry](#)
- [Cell Culture](#)

Anti-Low Molecular Weight E.Coli Protein Host Cell Protein (HCP) Antibody - Images



2D Western Blot of anti-E.coli Low Molecular Weight Host Cell Protein antibody. Load: 35 μ g LMW HCP. Primary antibody: Rabbit anti-LMW-HCP antibody at 1:200 for overnight at 4°C. Secondary antibody: Goat anti-rabbit secondary antibody at 1:10,000 for 30 min at RT. Block: MB-070 for 1 hour at RT.

Anti-Low Molecular Weight E.Coli Protein Host Cell Protein (HCP) Antibody - Background

Anti-LMW Host Cell Proteins Antibody recognizes low molecular weight protein fractions from E.coli. This antibody has been analyzed by 2D electrophoresis western blot to assure highest possible coverage of E.coli HCP. Host Cell Proteins are process-related impurities derived from a host cell expression system that may be present in trace amounts in a final drug substance. HCP Antibodies are used to detect impurities in biologically-based therapeutics. Detecting impurities often unseen by 1-D electrophoresis, a 2D electrophoresis western blot analysis delivers more complete insight into the immunocoverage of protein components of the host cell lysate.