

Anti-Bovine CCL2 (RABBIT) Antibody
CCL2 Antibody
Catalog # ASR4429

Specification

Anti-Bovine CCL2 (RABBIT) Antibody - Product Information

Host	Rabbit
Conjugate	Unconjugated
Target Species	Bovine
Reactivity	Bovine
Clonality	Polyclonal
Application	WB, E, I, LCI
Application Note	This protein-A purified antibody has been tested for use in ELISA and western blotting. Specific conditions for reactivity should be optimized by the end user. Expect a band approximately 8.8 kDa in size corresponding to bovine CCL2 protein by western blotting in the appropriate cell lysate or extract.
Physical State	Lyophilized
Buffer	0.02 M Potassium Phosphate, 0.15 M Sodium Chloride, pH 7.2
Immunogen	This protein-A purified antibody was prepared from whole rabbit serum produced by repeated immunizations with a recombinant protein raised in yeast, corresponding to the 76 amino acids of the mature bovine CCL2 protein.
Reconstitution Volume	100 µL
Reconstitution Buffer	Restore with deionized water (or equivalent)
Preservative	0.01% (w/v) Sodium Azide

Anti-Bovine CCL2 (RABBIT) Antibody - Additional Information

Other Names
281043

Purity

This product was Protein-A purified from monospecific antiserum by chromatography. This antibody is specific for bovine CCL2 protein. A BLAST analysis was used to suggest cross-reactivity with CCL2 from bovine sources based on 100% homology with the immunizing sequence. Partial reactivity is expected against *Sus scrofa* 85.5% and *Bos Taurus* 81.1%. Cross-reactivity with CCL2 from other sources has not been determined.

Storage Condition

Store vial at 4° C prior to restoration. For extended storage aliquot contents and freeze at -20° C or below. Avoid cycles of freezing and thawing. Centrifuge product if not completely clear after standing at room temperature. This product is stable for several weeks at 4° C as an undiluted

liquid. Dilute only prior to immediate use.

Precautions Note

This product is for research use only and is not intended for therapeutic or diagnostic applications.

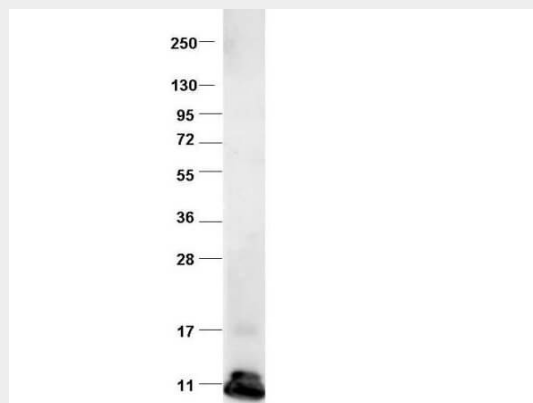
Anti-Bovine CCL2 (RABBIT) Antibody - Protein Information

Anti-Bovine CCL2 (RABBIT) Antibody - Protocols

Provided below are standard protocols that you may find useful for product applications.

- [Western Blot](#)
- [Blocking Peptides](#)
- [Dot Blot](#)
- [Immunohistochemistry](#)
- [Immunofluorescence](#)
- [Immunoprecipitation](#)
- [Flow Cytometry](#)
- [Cell Culture](#)

Anti-Bovine CCL2 (RABBIT) Antibody - Images



Western blot using Rockland's protein-A purified anti-bovine CCL2 antibody shows detection of recombinant bovine CCL2 at 8.8kDa raised in yeast. Protein was purified and resolved by SDS-PAGE, then transferred to PVDF membrane. Membrane was blocked with 3% BSA (BSA-30, diluted 1:10), and probed with Rockland Inc. Anti-bovine CCL2. After washing, membrane was probed with Dylight 649 Conjugated Anti-Rabbit IgG (H&L) (Donkey) Antibody (611-743-127).

Anti-Bovine CCL2 (RABBIT) Antibody - Background

CCL2 is a small cytokine belonging to the CC chemokine family that recruits monocytes, memory T cells, and dendritic cells to sites of tissue injury and infection. This chemokine is produced as a protein precursor containing a signal peptide of 23 amino acids and a mature peptide of 76 amino acids. It is a monomeric polypeptide, with a total molecular weight of approximately 8.8 kDa. The cell surface receptors that bind CCL2 are CCR2 and CCR4. CCL2 is found at the site of tooth eruption and bone degradation. In the bone, CCL2 is expressed by mature osteoclasts and osteoblasts and is under the control of nuclear factor κ B (NF κ B). In human osteoclasts, CCL2 and RANTES (regulated on activation normal T cell expressed and secreted) may act as an autocrine loop in human osteoclast differentiation. CCL2 causes the degranulation of basophils and mast

cells, an effect potentiated by pre-treatment with IL-3 and other cytokines.