

**Anti-Selenophosphate Synthetase 2 (SPS2) (RABBIT) Antibody**  
**Selenophosphate Synthetase 2 Antibody**  
**Catalog # ASR4415**

**Specification**

---

**Anti-Selenophosphate Synthetase 2 (SPS2) (RABBIT) Antibody - Product Information**

Host	<b>Rabbit</b>
Conjugate	<b>Unconjugated</b>
Target Species	<b>Mouse</b>
Reactivity	<b>Mouse</b>
Clonality	<b>Polyclonal</b>
Application	<b>WB, E, IP, I, LCI</b>
Application Note	<b>This Protein A purified antibody has been tested for use in ELISA and western blotting. Specific conditions for reactivity should be optimized by the end user. Expect a band approximately 48 kDa in size corresponding to SPS2 by western blotting in the appropriate cell lysate or extract.</b>
Physical State	<b>Liquid (sterile filtered)</b>
Buffer	<b>0.02 M Potassium Phosphate, 0.15 M Sodium Chloride, pH 7.2</b>
Immunogen	<b>This Protein A purified antibody was prepared from whole rabbit serum produced by repeated immunizations with a full-length recombinant protein corresponding to mouse SPS2.</b>
Preservative	<b>0.01% (w/v) Sodium Azide</b>

**Anti-Selenophosphate Synthetase 2 (SPS2) (RABBIT) Antibody - Additional Information**

**Gene ID** 20768

**Other Names**  
20768

**Purity**

This product was purified by Protein A chromatography from monospecific antiserum. This antibody reacts with mouse SPS2 and shows partial cross-reactivity with SPS1. A BLAST analysis was used to suggest cross-reactivity with SPS2 from human sources based on an 84% homology with the immunizing sequence. Cross-reactivity with SPS2 from other sources has not been determined.

**Storage Condition**

Store vial at -20° C prior to opening. Aliquot contents and freeze at -20° C or below for extended storage. Avoid cycles of freezing and thawing. Centrifuge product if not completely clear after standing at room temperature. This product is stable for several weeks at 4° C as an undiluted liquid. Dilute only prior to immediate use.

### Precautions Note

This product is for research use only and is not intended for therapeutic or diagnostic applications.

## Anti-Selenophosphate Synthetase 2 (SPS2) (RABBIT) Antibody - Protein Information

**Name** Seps2

**Synonyms** Sps2

### Function

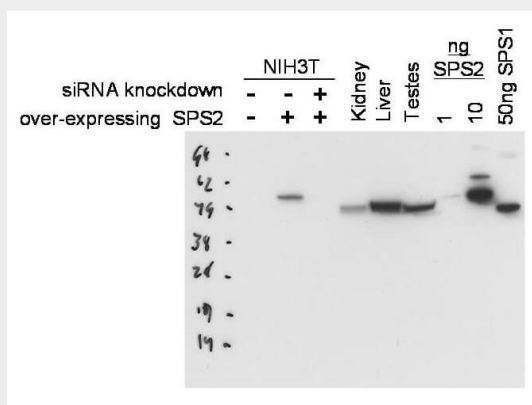
Synthesizes selenophosphate from selenide and ATP.

## Anti-Selenophosphate Synthetase 2 (SPS2) (RABBIT) Antibody - Protocols

Provided below are standard protocols that you may find useful for product applications.

- [Western Blot](#)
- [Blocking Peptides](#)
- [Dot Blot](#)
- [Immunohistochemistry](#)
- [Immunofluorescence](#)
- [Immunoprecipitation](#)
- [Flow Cytometry](#)
- [Cell Culture](#)

## Anti-Selenophosphate Synthetase 2 (SPS2) (RABBIT) Antibody - Images



Western blot using Rockland's Protein A purified anti-SPS2 antibody shows detection of SPS2 in NIH3T3 cells over-expressing this protein. No signal is seen in control lysates or in lysates from cells over-expressing the protein after pre-treatment with SPS2 siRNA. Endogenous SPS2 can be detected in mouse kidney, liver and testes tissue lysates. Partial cross-reactivity is seen against recombinant SPS1. The primary antibody was used at a 1:1000 dilution. Personal Communication, D. Hatfield, NCI, Bethesda, MD.

## Anti-Selenophosphate Synthetase 2 (SPS2) (RABBIT) Antibody - Background

This antibody is designed, produced, and validated as part of a collaboration between Rockland and the National Cancer Institute (NCI) and is suitable for Cancer, Immunology and Nuclear Signaling research. Selenophosphate synthetase (SeID) catalyzes the conversion of selenium to

selenophosphate which is required by a number of bacterial, archaeal and eukaryotic organisms for synthesis of selenocysteine-tRNA, the precursor of selenocysteine in selenoenzymes. A second selenophosphate synthetase (SPS2) was identified in mammals. SPS2 is itself a selenoprotein in mammals.