

**Anti-SPANX-C (RABBIT) Antibody**  
**SPANX-C Antibody**  
**Catalog # ASR4410**

**Specification**

---

**Anti-SPANX-C (RABBIT) Antibody - Product Information**

Host	Rabbit
Conjugate	Unconjugated
Target Species	Human
Reactivity	Human
Clonality	Polyclonal
Application	WB, IHC, E, I, LCI
Application Note	This protein A purified antibody has been tested for use in ELISA, immunohistochemistry, and by western blot. Specific conditions for reactivity should be optimized by the end user. Expect a band approximately 15-20 kDa in size corresponding to SPANX family members by western blotting in the appropriate human tissue. Most human cell lines are SPANX negative.
Physical State	Lyophilized
Buffer	0.02 M Potassium Phosphate, 0.15 M Sodium Chloride, pH 7.2
Immunogen	This Protein A purified antibody was prepared from whole rabbit serum produced by repeated immunizations with full-length recombinant human SPANX-C protein.
Reconstitution Volume	100 µL
Reconstitution Buffer	Restore with deionized water (or equivalent)
Preservative	0.01% (w/v) Sodium Azide

**Anti-SPANX-C (RABBIT) Antibody - Additional Information**

**Gene ID** 64663

**Other Names**  
64663

**Purity**

This Protein A purified antibody is directed against human SPANX-C protein. The product was purified from monospecific antiserum by protein A chromatography followed by exhaustive dialysis against the buffer stated above. A protein-protein BLAST analysis was used to suggest cross reactivity with most SPANX proteins from human, gorilla and chimpanzee. Reactivity against homologues from is not known.

**Storage Condition**

Store vial at 4° C prior to restoration. For extended storage aliquot contents and freeze at -20° C or below. Avoid cycles of freezing and thawing. Centrifuge product if not completely clear after standing at room temperature. This product is stable for several weeks at 4° C as an undiluted liquid. Dilute only prior to immediate use.

#### **Precautions Note**

This product is for research use only and is not intended for therapeutic or diagnostic applications.

### **Anti-SPANX-C (RABBIT) Antibody - Protein Information**

**Name** SPANXC

#### **Cellular Location**

Cytoplasm. Nucleus. Note=Associated with nuclear craters

#### **Tissue Location**

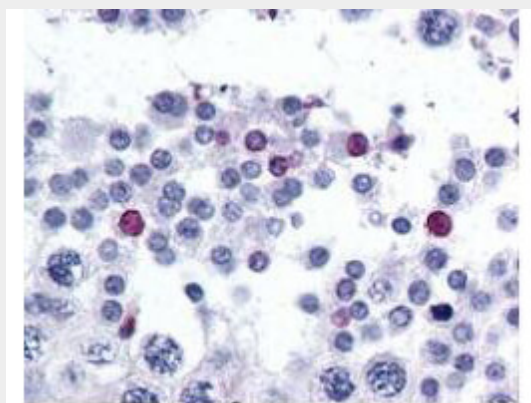
Detected in testis, melanoma and bladder carcinoma.

### **Anti-SPANX-C (RABBIT) Antibody - Protocols**

Provided below are standard protocols that you may find useful for product applications.

- [Western Blot](#)
- [Blocking Peptides](#)
- [Dot Blot](#)
- [Immunohistochemistry](#)
- [Immunofluorescence](#)
- [Immunoprecipitation](#)
- [Flow Cytometry](#)
- [Cell Culture](#)

### **Anti-SPANX-C (RABBIT) Antibody - Images**



Rockland's affinity purified anti-SPANX-C antibody was used at 2.5 µg/ml to detect signal in a variety of tissues including multi-human, multi-brain and multi-cancer slides. This image shows moderate positive staining of human sperm and spermatids at 60X. Tissue was formalin-fixed and paraffin embedded. The image shows localization of the antibody as the precipitated red signal, with a hematoxylin purple nuclear counterstain. Personal Communication, Tina Roush, LifeSpanBiosciences, Seattle, WA.

**Anti-SPANX-C (RABBIT) Antibody - Background**

This antibody is designed, produced, and validated as part of a collaboration between Rockland and the National Cancer Institute (NCI) and is suitable for Cancer, Immunology and Nuclear Signaling research. Human Sperm Proteins Associated with the Nucleus on X-chromosome (SPANX) are relatively low molecular weight cytoplasmic proteins found in testis and sperm. Their expression in other tissues indicates malignancies. Family members are observed as proteins that range from 15 to 20 kDa.