

Anti-RREB1 (RABBIT) Antibody
Rreb1 Antibody
Catalog # ASR4408**Specification**

Anti-RREB1 (RABBIT) Antibody - Product Information

Host	Rabbit
Conjugate	Unconjugated
Target Species	Mouse
Reactivity	Mouse
Clonality	Polyclonal
Application	WB, E, I, LCI
Application Note	This Protein A purified antibody has been tested for use in ELISA and by western blot. Specific conditions for reactivity should be optimized by the end user. Expect a predominant band approximately 90-180 kDa in size corresponding to RREB1 by western blotting in the appropriate cell lysate or extract. Multiple bands seen in the above western blot may indicate cross-reactive isoforms or truncated protein products.
Physical State	Liquid (sterile filtered)
Buffer	0.02 M Potassium Phosphate, 0.15 M Sodium Chloride, pH 7.2
Immunogen	Anti-RREB1 antibody was prepared from whole rabbit serum produced by repeated immunizations with a recombinant protein corresponding to mouse RREB1 protein.
Preservative	0.01% (w/v) Sodium Azide

Anti-RREB1 (RABBIT) Antibody - Additional Information**Gene ID** 68750**Other Names**
68750**Purity**

Anti-RREB1 antibody is directed against the mouse RREB1 protein. The product was Protein A purified from monospecific antiserum by immunoaffinity purification. Reactivity against homologues from other sources is not known.

Storage Condition

Store vial at -20° C prior to opening. Aliquot contents and freeze at -20° C or below for extended storage. Avoid cycles of freezing and thawing. Centrifuge product if not completely clear after standing at room temperature. This product is stable for several weeks at 4° C as an undiluted liquid. Dilute only prior to immediate use.

Precautions Note

This product is for research use only and is not intended for therapeutic or diagnostic applications.

Anti-RREB1 (RABBIT) Antibody - Protein Information**Name** Rreb1**Function**

Transcription factor that binds specifically to the RAS- responsive elements (RRE) of gene promoters (PubMed: [12700664](http://www.uniprot.org/citations/12700664)). Represses the angiotensinogen gene (By similarity). Negatively regulates the transcriptional activity of AR (By similarity). Potentiates the transcriptional activity of NEUROD1 (By similarity). Binds specifically to the allelic variant of the CDKN2A promoter present in Balb/c mice, which leads to a down-regulation of CDKN2A expression in this strain, and, as a consequence, to an elevated susceptibility to pristane-induced tumors (PubMed: [12700664](http://www.uniprot.org/citations/12700664)). Promotes brown adipocyte differentiation (PubMed: [27923061](http://www.uniprot.org/citations/27923061)). May be involved in Ras/Raf-mediated cell differentiation by enhancing calcitonin expression (By similarity).

Cellular Location

Nucleus speckle.

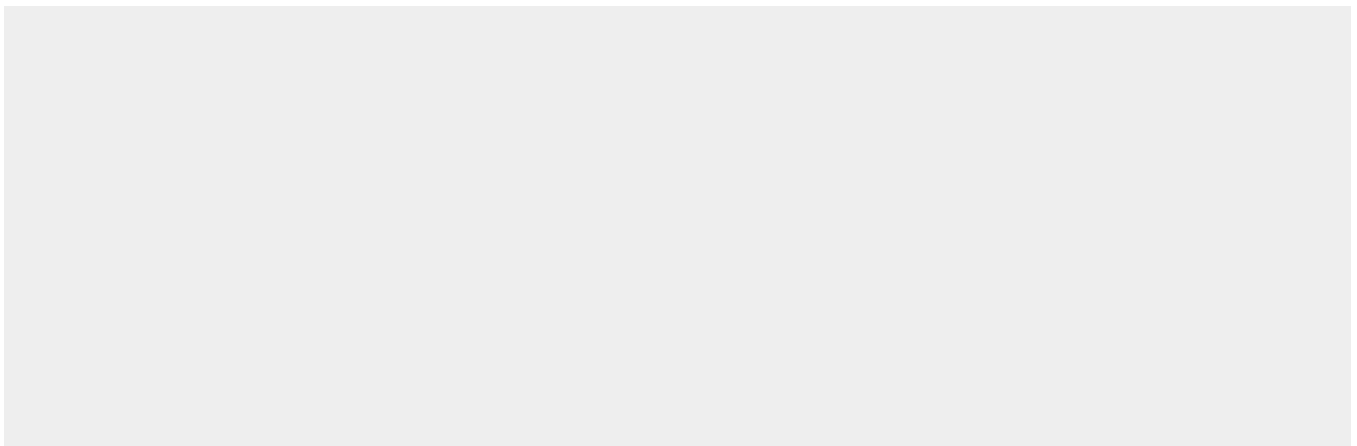
Tissue Location

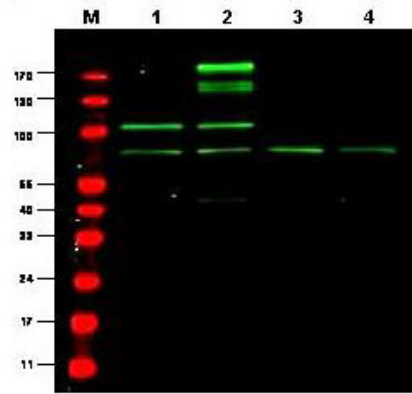
Expressed in splenic B-cells.

Anti-RREB1 (RABBIT) Antibody - Protocols

Provided below are standard protocols that you may find useful for product applications.

- [Western Blot](#)
- [Blocking Peptides](#)
- [Dot Blot](#)
- [Immunohistochemistry](#)
- [Immunofluorescence](#)
- [Immunoprecipitation](#)
- [Flow Cytometry](#)
- [Cell Culture](#)

Anti-RREB1 (RABBIT) Antibody - Images



Western blot using Rockland's Protein A Purified anti-RREB1 antibody shows detection of a predominant band believed to be RREB1 in various cell lysates (1 - HEK293, 2 - RFP-RREB transfected HEK293, 3 - M460 and 4 - T1165). All lysates were loaded at 20 µg per lane and separated by SDS-PAGE. After transfer to nitrocellulose, the membrane was probed with the primary antibody diluted to 1:1,000. The membrane was washed and reacted with IRDye800 conjugated Gt-a-Rabbit IgG [H&L] MX (611-132-122). IRDye800 fluorescence image was captured using the Odyssey® Infrared Imaging System developed by LI-COR. IRDye is a trademark of LI-COR, Inc. Size estimation was made by comparison to prestained MW markers as indicated. Personal Communication, Shuling Zhang, CCR, NCI, Bethesda, MD.

Anti-RREB1 (RABBIT) Antibody - Background

This antibody is designed, produced, and validated as part of a collaboration between Rockland and the National Cancer Institute (NCI) and is suitable for Cancer, Neuroscience, and Signal Transduction research. RREB1 (also known as RAS-responsive element binding protein 1 and Raf responsive zinc finger protein) is a transcription factor that binds specifically to the distal RAS-responsive element (RRE) of gene promoters. May be involved in Ras/Raf-mediated cell differentiation by enhancing calcitonin expression.