

Anti-RFX5 (aa 320 to 494) (RABBIT) Antibody
RFX5 Antibody
Catalog # ASR4384**Specification**

Anti-RFX5 (aa 320 to 494) (RABBIT) Antibody - Product Information

Host	Rabbit
Conjugate	Unconjugated
Target Species	Human
Reactivity	Human
Clonality	Polyclonal
Application	WB, E, I, LCI
Application Note	Anti RFX5 antibody has been assayed by immunoblot and found to be reactive against RFX5 (aa 320 to 494) from a variety of fibroblast and B-cell lysates at a dilution of 1:1,000 followed by reaction with Peroxidase conjugated Affinity Purified anti-Rabbit IgG. Anti-RFX5 (aa 320 to 494) detects a 75 kDa band by immunoblot for human RFX5. This product was also tested in a gel supershift assay and found to be reactive against RFX5 complexes using 0.5 to 1.0 µl per assay.
Physical State	Liquid (sterile filtered)
Buffer	0.02 M Potassium Phosphate, 0.15 M Sodium Chloride, pH 7.2
Immunogen	RFX5 peptide corresponding to a region at amino acids 320 to 494 of the human protein conjugated to Keyhole Limpet Hemocyanin (KLH).
Preservative	0.01% (w/v) Sodium Azide

Anti-RFX5 (aa 320 to 494) (RABBIT) Antibody - Additional Information**Gene ID** 5993**Other Names**
5993**Purity**

RFX5 antibody was prepared from monospecific antiserum by delipidation, salt fractionation and ion exchange chromatography. Anti-RFX5 (aa 320 to 494) may react with unknown minor bands at 65 kDa and 80 kDa.

Storage Condition

Store vial at -20° C prior to opening. Aliquot contents and freeze at -20° C or below for extended storage. Avoid cycles of freezing and thawing. Centrifuge product if not completely clear after standing at room temperature. This product is stable for several weeks at 4° C as an undiluted liquid. Dilute only prior to immediate use.

Precautions Note

This product is for research use only and is not intended for therapeutic or diagnostic applications.

Anti-RFX5 (aa 320 to 494) (RABBIT) Antibody - Protein Information

Name RFX5

Function

Activates transcription from class II MHC promoters. Recognizes X-boxes. Mediates cooperative binding between RFX and NF-Y. RFX binds the X1 box of MHC-II promoters.

Cellular Location

Nucleus.

Tissue Location

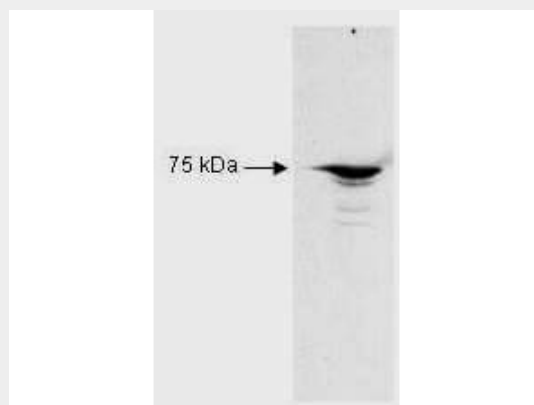
Ubiquitous.

Anti-RFX5 (aa 320 to 494) (RABBIT) Antibody - Protocols

Provided below are standard protocols that you may find useful for product applications.

- [Western Blot](#)
- [Blocking Peptides](#)
- [Dot Blot](#)
- [Immunohistochemistry](#)
- [Immunofluorescence](#)
- [Immunoprecipitation](#)
- [Flow Cytometry](#)
- [Cell Culture](#)

Anti-RFX5 (aa 320 to 494) (RABBIT) Antibody - Images



Western Blot of Rabbit Anti-RFX5 antibody. Lane 1: Raji B cell nuclear extract lysates. Lane 2: none. Load: 35 µg per lane. Primary antibody: RFX5 antibody at 1:2,500 for overnight at 4°C. Secondary antibody: HRP Goat-a-Rabbit IgG secondary antibody at 1:5,000 for 45 min at RT. Block: 5% BLOTTO overnight at 4°C. Predicted/Observed size: 65.3 kDa, 72 kDa for RFX5. Other band(s): none.

Anti-RFX5 (aa 320 to 494) (RABBIT) Antibody - Background

Anti-RFX5 is specific for the RFX5 protein. RFX5 is the fifth member of the growing family of DNA-binding proteins sharing a novel and highly characteristic DNA-binding domain called the RFX motif. Multiple alternatively spliced transcript variants have been found but the full-length nature of only two have been determined. RFX5 has been shown to interact with CIITA.