

Anti-ALKALINE PHOSPHATASE (Human Intestine) (RABBIT) Antibody
ALKALINE PHOSPHATASE Antibody
Catalog # ASR4379

Specification

Anti-ALKALINE PHOSPHATASE (Human Intestine) (RABBIT) Antibody - Product Information

Host	Rabbit
Conjugate	Unconjugated
Target Species	Human
Reactivity	Human
Clonality	Polyclonal
Application	WB, E, I, LCI
Application Note	ALKALINE PHOSPHATASE Antibody has been assayed against 1.0 µg of Alkaline Phosphatase [Human Intestine] in a standard ELISA using Peroxidase conjugated Affinity Purified anti-Rabbit IgG [H&L] (Goat) code #611-1302 and (ABTS (2,2'-azino-bis-[3-ethylbenthiiazoline-6-sulfonic acid]) code # ABTS-100 as a substrate for 30 minutes at room temperature. A working dilution of 1:20,000 to 1:100,000 of the reconstitution concentration is suggested for this product.
Physical State	Lyophilized
Buffer	0.02 M Potassium Phosphate, 0.15 M Sodium Chloride, pH 7.2
Immunogen	Alkaline Phosphatase [Human Intestine]
Reconstitution Volume	100 µL
Reconstitution Buffer	Restore with deionized water (or equivalent)
Preservative	0.01% (w/v) Sodium Azide

Anti-ALKALINE PHOSPHATASE (Human Intestine) (RABBIT) Antibody - Additional Information

Gene ID 248

Other Names
248

Purity

Anti-ALKALINE PHOSPHATASE is an IgG fraction antibody purified from monospecific antiserum by a multi-step process which includes delipidation, salt fractionation and ion exchange chromatography followed by extensive dialysis against the buffer stated above. Assay by immunoelectrophoresis resulted in a single precipitin arc against anti-Rabbit Serum as well as purified and partially purified Alkaline Phosphatase [Human Intestine]. Cross reactivity against Alkaline Phosphatase from other sources is unknown.

Storage Condition

Store vial at 4° C prior to restoration. For extended storage aliquot contents and freeze at -20° C or below. Avoid cycles of freezing and thawing. Centrifuge product if not completely clear after standing at room temperature. This product is stable for several weeks at 4° C as an undiluted liquid. Dilute only prior to immediate use.

Precautions Note

This product is for research use only and is not intended for therapeutic or diagnostic applications.

Anti-ALKALINE PHOSPHATASE (Human Intestine) (RABBIT) Antibody - Protein Information

Name ALPI

Function

Alkaline phosphatase that can hydrolyze various phosphate compounds.

Cellular Location

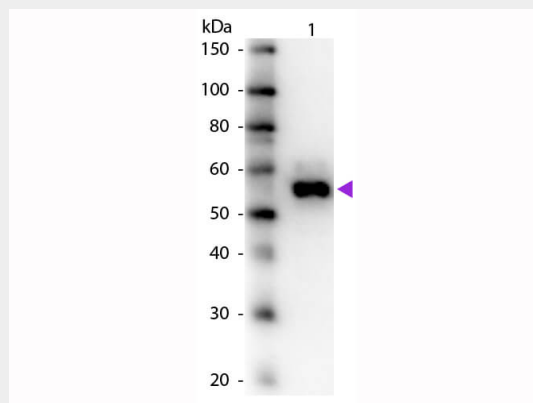
Cell membrane {ECO:0000250|UniProtKB:P15693}; Lipid-anchor, GPI-anchor {ECO:0000250|UniProtKB:P15693}

Anti-ALKALINE PHOSPHATASE (Human Intestine) (RABBIT) Antibody - Protocols

Provided below are standard protocols that you may find useful for product applications.

- [Western Blot](#)
- [Blocking Peptides](#)
- [Dot Blot](#)
- [Immunohistochemistry](#)
- [Immunofluorescence](#)
- [Immunoprecipitation](#)
- [Flow Cytometry](#)
- [Cell Culture](#)

Anti-ALKALINE PHOSPHATASE (Human Intestine) (RABBIT) Antibody - Images



Western Blot of Rabbit Anti-Alkaline Phosphatase Primary Antibody. Molecular Weight Marker. Lane 1: Alkaline Phosphatase. Load: 50 ng per lane. Primary antibody: Alkaline Phosphatase primary antibody at 1:1,000 overnight at 4°C. Secondary antibody: Peroxidase rabbit secondary

antibody (p/n 611-1302) at 1:40,000 for 30 min at RT. Block: (p/n MB-070) for 30 min at RT. Predicted/Observed size: 58 kDa for Alkaline Phosphatase.

Anti-ALKALINE PHOSPHATASE (Human Intestine) (RABBIT) Antibody - Background

In most mammals there are four different isozymes: placental, placental-like, intestinal and tissue non-specific (liver/bone/kidney). Alkaline Phosphatase catalytic activity is phosphate monoester + H₂O = an alcohol + phosphate.