

Anti-B-PHYCOERYTHRIN (RABBIT) Antibody
B-Phycoerythrin Antibody
Catalog # ASR4362**Specification**

Anti-B-PHYCOERYTHRIN (RABBIT) Antibody - Product Information

Host	Rabbit
Conjugate	Unconjugated
Clonality	Polyclonal
Application	WB, IHC, E, I, LCI
Application Note	Anti-B-Phycoerythrin antibody has been tested by ELISA and dot blot and is suitable for western blot and immunohistochemistry, as well as other assays requiring lot-to-lot consistency.
Physical State	Liquid (sterile filtered)
Buffer	0.02 M Potassium Phosphate, 0.15 M Sodium Chloride, pH 7.2
Immunogen	Phycoerythrin [Porphyridium creuentum]
Preservative	0.01% (w/v) Sodium Azide

Anti-B-PHYCOERYTHRIN (RABBIT) Antibody - Additional Information**Purity**

Anti-B-Phycoerythrin Antibody is an IgG fraction antibody purified from monospecific antiserum by a multi-step process which includes delipidation, salt fractionation and ion exchange chromatography followed by extensive dialysis against the buffer stated above. Assay by immunoelectrophoresis resulted in a single precipitin arc against anti-Rabbit Serum as well as purified and partially purified Phycoerythrin [Porphyridium creuentum].

Storage Condition

Store vial at -20° C prior to opening. Aliquot contents and freeze at -20° C or below for extended storage. Avoid cycles of freezing and thawing. Centrifuge product if not completely clear after standing at room temperature. This product is stable for several weeks at 4° C as an undiluted liquid. Dilute only prior to immediate use.

Precautions Note

This product is for research use only and is not intended for therapeutic or diagnostic applications.

Anti-B-PHYCOERYTHRIN (RABBIT) Antibody - Protein Information

Name cpeA

Function

Light-harvesting photosynthetic bile pigment-protein from the phycobiliprotein complex.

Cellular Location

Plastid, chloroplast thylakoid membrane; Peripheral membrane protein; Stromal side. Note=Forms

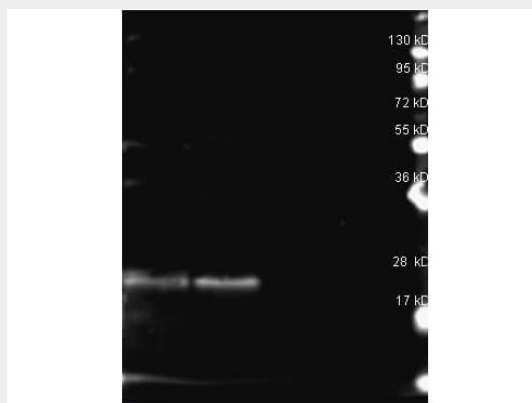
the periphery of the phycobilisome rod

Anti-B-PHYCOERYTHRIN (RABBIT) Antibody - Protocols

Provided below are standard protocols that you may find useful for product applications.

- [Western Blot](#)
- [Blocking Peptides](#)
- [Dot Blot](#)
- [Immunohistochemistry](#)
- [Immunofluorescence](#)
- [Immunoprecipitation](#)
- [Flow Cytometry](#)
- [Cell Culture](#)

Anti-B-PHYCOERYTHRIN (RABBIT) Antibody - Images



Rockland Rabbit anti B-Phycoerythrin antibody (200-4199 lot 25411) was used to detect B-Phycoerythrin under reducing (R) conditions. Reduced samples of purified Phycoerythrin contained 4% BME and were boiled for 5 minutes. Samples of ~1 μ g of protein per lane were run by SDS-PAGE. Protein was transferred to nitrocellulose and probed with 1:1000 dilution of anti B-Phycoerythrin antibody (200-4199 lot 25411 ON 4 C) and detection was using Dylight 649 conjugated Donkey anti rabbit (611-743-127 lot 20831 1:10K 1.5 hr RT in MB-070) and imaged on the BioRad VersaDoc System.

Anti-B-PHYCOERYTHRIN (RABBIT) Antibody - Background

Anti-B-Phycoerythrin Antibody detects the B-PE phycoerythrin protein. Phycoerythrin is a red protein from the light-harvesting phycobiliprotein family, present in cyanobacteria, and red algae. Phycoerythrin is organized in a hexameric structure of alpha and beta chains, covalently binding chromophores called phycobilins. R-Phycoerythrin and B-Phycoerythrin are among the brightest biological fluorescent dyes and are commonly used as a fluorescent dye in many assays and is frequently conjugated to antibodies as a reporter molecule. The spectral properties of B-Phycoerythrin are absorption at 545 nm and emission at 572 nm.