

**Anti-TRYPSIN INHIBITOR (RABBIT) Antibody**  
**Trypsin Inhibitor Antibody**  
**Catalog # ASR4354****Specification****Anti-TRYPSIN INHIBITOR (RABBIT) Antibody - Product Information**

Host	Rabbit
Conjugate	Unconjugated
Target Species	Soy Bean
Clonality	Polyclonal
Application	WB, E, IP, I, LCI
Application Note	Soybean trypsin inhibitor antibody has been tested by ELISA and western blot and is assayed against 1.0 ug of Trypsin Inhibitor [Soybean] in a standard ELISA using Peroxidase conjugated Affinity Purified anti-Rabbit IgG #611-1302 and (ABTS (2,2'-azino-bis-[3-ethylbenthiiazoline -6-sulfonic acid]) as a substrate for 30 minutes at room temperature. A working dilution of 1:3,000 to 1:12,000 of the reconstitution concentration is suggested for this product.
Physical State	Liquid (sterile filtered)
Buffer	0.02 M Potassium Phosphate, 0.15 M Sodium Chloride, pH 7.2
Immunogen	Trypsin Inhibitor [Soybean]
Preservative	0.01% (w/v) Sodium Azide

**Anti-TRYPSIN INHIBITOR (RABBIT) Antibody - Additional Information****Gene ID** 547831**Other Names**  
547831**Purity**

Anti-trypsin inhibitor antibody is an IgG fraction antibody purified from monospecific antiserum by a multi-step process which includes delipidation, salt fractionation and ion exchange chromatography followed by extensive dialysis against the buffer stated above. Assay by immunoelectrophoresis resulted in a single precipitin arc against anti-Rabbit Serum as well as purified and partially purified Trypsin Inhibitor [Soybean]. Cross reactivity against Trypsin Inhibitor from other sources may occur but have not been specifically determined.

**Storage Condition**

Store vial at -20° C prior to opening. Aliquot contents and freeze at -20° C or below for extended storage. Avoid cycles of freezing and thawing. Centrifuge product if not completely clear after standing at room temperature. This product is stable for several weeks at 4° C as an undiluted liquid. Dilute only prior to immediate use.

### Precautions Note

This product is for research use only and is not intended for therapeutic or diagnostic applications.

### Anti-TRYPSIN INHIBITOR (RABBIT) Antibody - Protein Information

**Name** KT13

#### Function

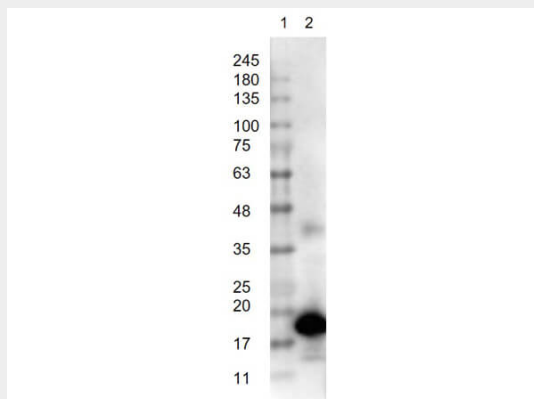
Inhibition of trypsin.

### Anti-TRYPSIN INHIBITOR (RABBIT) Antibody - Protocols

Provided below are standard protocols that you may find useful for product applications.

- [Western Blot](#)
- [Blocking Peptides](#)
- [Dot Blot](#)
- [Immunohistochemistry](#)
- [Immunofluorescence](#)
- [Immunoprecipitation](#)
- [Flow Cytometry](#)
- [Cell Culture](#)

### Anti-TRYPSIN INHIBITOR (RABBIT) Antibody - Images



Western Blot of Rabbit Anti-Trypsin Inhibitor Antibody. Lane 1: Opal PreStained Molecular Weight Marker (p/n MB-210-0500). Lane 2: Trypsin Inhibitor [50ng]. Primary Antibody: Anti-Trypsin Inhibitor at 1  $\mu\text{g}/\text{mL}$  overnight at 2-8°C. Secondary Antibody: Goat Anti-Rabbit IgG HRP (p/n 611-103-122) 1:40,000 for 30mins at RT. Block: BlockOut Buffer (p/n MB-073) for 30mins at RT. Expect: ~25kDa.

### Anti-TRYPSIN INHIBITOR (RABBIT) Antibody - Background

Trypsin inhibitor antibody is specific for soybean trypsin inhibitor. Soybean trypsin inhibitor inhibits trypsin, but also chymotrypsin and plasmin at a reduced level. SBTI has inhibitory effects towards plasma kallikrein and coagulation Factor Xa. Soybean trypsin inhibitor will not inhibit metalloproteases, tissue-based kallikrein, acid proteases, or thio proteases.