

**Anti-AKT1 (MOUSE) Fluorescein Conjugated Monoclonal Antibody**  
**AKT1 FITC Antibody**  
**Catalog # ASR4303****Specification****Anti-AKT1 (MOUSE) Fluorescein Conjugated Monoclonal Antibody - Product Information**

Host	Mouse
Conjugate	Fluorescein (FITC)
FP Value	5.0
Target Species	Human
Reactivity	Rat, Human, Mouse
Clonality	Monoclonal
Application	WB, IHC, E, I, LCI
Application Note	Anti-AKT1 FITC Antibody has been tested by ELISA and western blot and is suitable for Flow Cytometry, immunohistochemistry, and western blotting. Expect a band approximately 56 kDa in size corresponding to AKT1 protein by western blotting in the appropriate cell lysate or extract. This monoclonal antibody reacts with human AKT. Specific conditions for reactivity should be optimized by the end user. For immunohistochemistry we recommend the use of fresh frozen tissues. Attempts at staining paraffin-embedded formalin fixed tissues were negative. No pre-treatment of sample is required.
Physical State	Lyophilized
Buffer	0.02 M Potassium Phosphate, 0.5 M Sodium Chloride, pH 7.2
Immunogen	Anti-AKT1 Antibody was produced in mice by repeated immunizations with a synthetic peptide corresponding to internal residues of human AKT1 protein followed by monoclonal development.
Reconstitution Volume	50 µL
Reconstitution Buffer	Restore with deionized water (or equivalent)
Stabilizer	10 mg/mL Bovine Serum Albumin (BSA) - Immunoglobulin and Protease free
Preservative	0.01% (w/v) Sodium Azide

**Anti-AKT1 (MOUSE) Fluorescein Conjugated Monoclonal Antibody - Additional Information**

Gene ID 207

Other Names  
207

### Purity

Anti-AKT1 antibody is directed against human AKT1. The antibody detects both unphosphorylated and phosphorylated forms of the protein. Anti-AKT1 antibody was purified from ascites by Protein A chromatography. Cross reactivity with AKT1 from other species has not been determined, however, the sequence of the immunogen shows 85% identity to mouse and 92% identity with rat, therefore, cross reactivity is expected.

### Storage Condition

Store vial at 4° C prior to restoration. Restore with deionized water (or equivalent). For extended storage aliquot contents and freeze at -20° C or below. Avoid cycles of freezing and thawing. Centrifuge product if not completely clear after standing at room temperature. This product is stable for several weeks at 4° C as an undiluted liquid. Dilute only prior to immediate use.

### Precautions Note

This product is for research use only and is not intended for therapeutic or diagnostic applications.

## Anti-AKT1 (MOUSE) Fluorescein Conjugated Monoclonal Antibody - Protein Information

**Name** AKT1

**Synonyms** PKB, RAC

### Function

AKT1 is one of 3 closely related serine/threonine-protein kinases (AKT1, AKT2 and AKT3) called the AKT kinase, and which regulate many processes including metabolism, proliferation, cell survival, growth and angiogenesis (PubMed: <a href="http://www.uniprot.org/citations/11882383" target="\_blank">11882383</a>, PubMed: <a href="http://www.uniprot.org/citations/15526160" target="\_blank">15526160</a>, PubMed: <a href="http://www.uniprot.org/citations/15861136" target="\_blank">15861136</a>, PubMed: <a href="http://www.uniprot.org/citations/21432781" target="\_blank">21432781</a>, PubMed: <a href="http://www.uniprot.org/citations/21620960" target="\_blank">21620960</a>, PubMed: <a href="http://www.uniprot.org/citations/31204173" target="\_blank">31204173</a>). This is mediated through serine and/or threonine phosphorylation of a range of downstream substrates (PubMed: <a href="http://www.uniprot.org/citations/11882383" target="\_blank">11882383</a>, PubMed: <a href="http://www.uniprot.org/citations/15526160" target="\_blank">15526160</a>, PubMed: <a href="http://www.uniprot.org/citations/21432781" target="\_blank">21432781</a>, PubMed: <a href="http://www.uniprot.org/citations/21620960" target="\_blank">21620960</a>, PubMed: <a href="http://www.uniprot.org/citations/31204173" target="\_blank">31204173</a>). Over 100 substrate candidates have been reported so far, but for most of them, no isoform specificity has been reported (PubMed: <a href="http://www.uniprot.org/citations/11882383" target="\_blank">11882383</a>, PubMed: <a href="http://www.uniprot.org/citations/15526160" target="\_blank">15526160</a>, PubMed: <a href="http://www.uniprot.org/citations/21432781" target="\_blank">21432781</a>, PubMed: <a href="http://www.uniprot.org/citations/21620960" target="\_blank">21620960</a>). AKT is responsible of the regulation of glucose uptake by mediating insulin-induced translocation of the SLC2A4/GLUT4 glucose transporter to the cell surface (By similarity). Phosphorylation of PTPN1 at 'Ser-50' negatively modulates its phosphatase activity preventing dephosphorylation of the insulin receptor and the attenuation of insulin signaling (By similarity). Phosphorylation of TBC1D4 triggers the binding of this effector to inhibitory 14-3-3 proteins, which is required for insulin-stimulated glucose transport (PubMed: <a href="http://www.uniprot.org/citations/11994271" target="\_blank">11994271</a>). AKT regulates also the storage of glucose in the form of glycogen by phosphorylating GSK3A at 'Ser-21' and GSK3B at 'Ser-9', resulting in inhibition of its kinase activity (By similarity). Phosphorylation of GSK3 isoforms by AKT is also thought to be one mechanism by which cell proliferation is driven (By similarity). AKT regulates also cell survival via the phosphorylation of MAP3K5 (apoptosis signal-related kinase) (PubMed: <a href="http://www.uniprot.org/citations/11154276" target="\_blank">11154276</a>

target="\_blank">11154276</a>). Phosphorylation of 'Ser-83' decreases MAP3K5 kinase activity stimulated by oxidative stress and thereby prevents apoptosis (PubMed:<a href="http://www.uniprot.org/citations/11154276" target="\_blank">11154276</a>). AKT mediates insulin-stimulated protein synthesis by phosphorylating TSC2 at 'Ser-939' and 'Thr-1462', thereby activating the mTORC1 signaling pathway, and leading to both phosphorylation of 4E-BP1 and in activation of RPS6KB1 (PubMed:<a href="http://www.uniprot.org/citations/12150915" target="\_blank">12150915</a>, PubMed:<a href="http://www.uniprot.org/citations/12172553" target="\_blank">12172553</a>). Also regulates the mTORC1 signaling pathway by catalyzing phosphorylation of CASTOR1 and DEPDC5 (PubMed:<a href="http://www.uniprot.org/citations/31548394" target="\_blank">31548394</a>, PubMed:<a href="http://www.uniprot.org/citations/33594058" target="\_blank">33594058</a>). AKT is involved in the phosphorylation of members of the FOXO factors (Forkhead family of transcription factors), leading to binding of 14-3-3 proteins and cytoplasmic localization (PubMed:<a href="http://www.uniprot.org/citations/10358075" target="\_blank">10358075</a>). In particular, FOXO1 is phosphorylated at 'Thr-24', 'Ser-256' and 'Ser-319' (PubMed:<a href="http://www.uniprot.org/citations/10358075" target="\_blank">10358075</a>). FOXO3 and FOXO4 are phosphorylated on equivalent sites (PubMed:<a href="http://www.uniprot.org/citations/10358075" target="\_blank">10358075</a>). AKT has an important role in the regulation of NF- kappa-B-dependent gene transcription and positively regulates the activity of CREB1 (cyclic AMP (cAMP)-response element binding protein) (PubMed:<a href="http://www.uniprot.org/citations/9829964" target="\_blank">9829964</a>). The phosphorylation of CREB1 induces the binding of accessory proteins that are necessary for the transcription of pro-survival genes such as BCL2 and MCL1 (PubMed:<a href="http://www.uniprot.org/citations/9829964" target="\_blank">9829964</a>). AKT phosphorylates 'Ser-454' on ATP citrate lyase (ACLY), thereby potentially regulating ACLY activity and fatty acid synthesis (By similarity). Activates the 3B isoform of cyclic nucleotide phosphodiesterase (PDE3B) via phosphorylation of 'Ser-273', resulting in reduced cyclic AMP levels and inhibition of lipolysis (By similarity). Phosphorylates PIKFYVE on 'Ser-318', which results in increased PI(3)P-5 activity (By similarity). The Rho GTPase-activating protein DLC1 is another substrate and its phosphorylation is implicated in the regulation cell proliferation and cell growth (By similarity). AKT plays a role as key modulator of the AKT-mTOR signaling pathway controlling the tempo of the process of newborn neurons integration during adult neurogenesis, including correct neuron positioning, dendritic development and synapse formation (By similarity). Signals downstream of phosphatidylinositol 3-kinase (PI(3)K) to mediate the effects of various growth factors such as platelet-derived growth factor (PDGF), epidermal growth factor (EGF), insulin and insulin-like growth factor 1 (IGF1) (PubMed:<a href="http://www.uniprot.org/citations/12176338" target="\_blank">12176338</a>, PubMed:<a href="http://www.uniprot.org/citations/12964941" target="\_blank">12964941</a>). AKT mediates the antiapoptotic effects of IGF1 (By similarity). Essential for the SPATA13-mediated regulation of cell migration and adhesion assembly and disassembly (PubMed:<a href="http://www.uniprot.org/citations/19934221" target="\_blank">19934221</a>). May be involved in the regulation of the placental development (By similarity). Phosphorylates STK4/MST1 at 'Thr-120' and 'Thr-387' leading to inhibition of its: kinase activity, nuclear translocation, autophosphorylation and ability to phosphorylate FOXO3 (PubMed:<a href="http://www.uniprot.org/citations/17726016" target="\_blank">17726016</a>). Phosphorylates STK3/MST2 at 'Thr-117' and 'Thr-384' leading to inhibition of its: cleavage, kinase activity, autophosphorylation at Thr-180, binding to RASSF1 and nuclear translocation (PubMed:<a href="http://www.uniprot.org/citations/20086174" target="\_blank">20086174</a>). Phosphorylates SRPK2 and enhances its kinase activity towards SRSF2 and ACIN1 and promotes its nuclear translocation (PubMed:<a href="http://www.uniprot.org/citations/19592491" target="\_blank">19592491</a>). Phosphorylates RAF1 at 'Ser-259' and negatively regulates its activity (PubMed:<a href="http://www.uniprot.org/citations/10576742" target="\_blank">10576742</a>). Phosphorylation of BAD stimulates its pro-apoptotic activity (PubMed:<a href="http://www.uniprot.org/citations/10926925" target="\_blank">10926925</a>). Phosphorylates KAT6A at 'Thr-369' and this phosphorylation inhibits the interaction of KAT6A with PML and negatively regulates its acetylation activity towards p53/TP53 (PubMed:<a href="http://www.uniprot.org/citations/23431171" target="\_blank">23431171</a>). Phosphorylates palladin (PALLD), modulating cytoskeletal organization and cell motility

(PubMed:<a href="http://www.uniprot.org/citations/20471940" target="\_blank">20471940</a>). Phosphorylates prohibitin (PHB), playing an important role in cell metabolism and proliferation (PubMed:<a href="http://www.uniprot.org/citations/18507042" target="\_blank">18507042</a>). Phosphorylates CDKN1A, for which phosphorylation at 'Thr-145' induces its release from CDK2 and cytoplasmic relocation (PubMed:<a href="http://www.uniprot.org/citations/16982699" target="\_blank">16982699</a>). These recent findings indicate that the AKT1 isoform has a more specific role in cell motility and proliferation (PubMed:<a href="http://www.uniprot.org/citations/16139227" target="\_blank">16139227</a>). Phosphorylates CLK2 thereby controlling cell survival to ionizing radiation (PubMed:<a href="http://www.uniprot.org/citations/20682768" target="\_blank">20682768</a>). Phosphorylates PCK1 at 'Ser-90', reducing the binding affinity of PCK1 to oxaloacetate and changing PCK1 into an atypical protein kinase activity using GTP as donor (PubMed:<a href="http://www.uniprot.org/citations/32322062" target="\_blank">32322062</a>). Also acts as an activator of TMEM175 potassium channel activity in response to growth factors: forms the lysoK(GF) complex together with TMEM175 and acts by promoting TMEM175 channel activation, independently of its protein kinase activity (PubMed:<a href="http://www.uniprot.org/citations/32228865" target="\_blank">32228865</a>). Acts as a regulator of mitochondrial calcium uptake by mediating phosphorylation of MICU1 in the mitochondrial intermembrane space, impairing MICU1 maturation (PubMed:<a href="http://www.uniprot.org/citations/30504268" target="\_blank">30504268</a>). Acts as an inhibitor of tRNA methylation by mediating phosphorylation of the N-terminus of METTL1, thereby inhibiting METTL1 methyltransferase activity (PubMed:<a href="http://www.uniprot.org/citations/15861136" target="\_blank">15861136</a>). In response to LPAR1 receptor pathway activation, phosphorylates Rabin8/RAB3IP which alters its activity and phosphorylates WDR44 which induces WDR44 binding to Rab11, thereby switching Rab11 vesicular function from preciliary trafficking to endocytic recycling (PubMed:<a href="http://www.uniprot.org/citations/31204173" target="\_blank">31204173</a>).

#### Cellular Location

Cytoplasm {ECO:0000250|UniProtKB:P31750}. Nucleus. Cell membrane. Mitochondrion intermembrane space {ECO:0000250|UniProtKB:P31750}. Note=Nucleus after activation by integrin-linked protein kinase 1 (ILK1). Nuclear translocation is enhanced by interaction with TCL1A. Phosphorylation on Tyr-176 by TNK2 results in its localization to the cell membrane where it is targeted for further phosphorylations on Thr-308 and Ser-473 leading to its activation and the activated form translocates to the nucleus Colocalizes with WDFY2 in intracellular vesicles (PubMed:16792529) Also localizes to mitochondrial intermembrane space in response to rapamycin treatment (By similarity). {ECO:0000250|UniProtKB:P31750, ECO:0000269|PubMed:16792529}

#### Tissue Location

Expressed in prostate cancer and levels increase from the normal to the malignant state (at protein level). Expressed in all human cell types so far analyzed. The Tyr-176 phosphorylated form shows a significant increase in expression in breast cancers during the progressive stages i.e. normal to hyperplasia (ADH), ductal carcinoma in situ (DCIS), invasive ductal carcinoma (IDC) and lymph node metastatic (LNMM) stages.

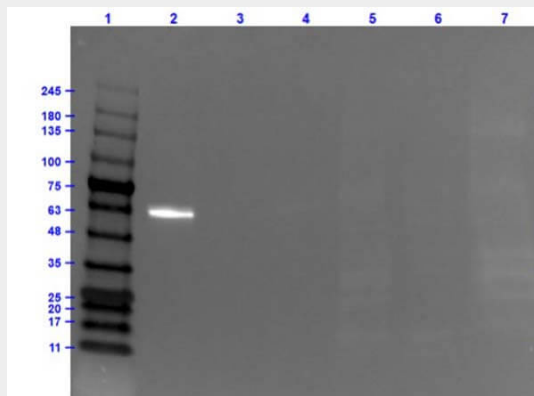
### Anti-AKT1 (MOUSE) Fluorescein Conjugated Monoclonal Antibody - Protocols

Provided below are standard protocols that you may find useful for product applications.

- [Western Blot](#)
- [Blocking Peptides](#)
- [Dot Blot](#)
- [Immunohistochemistry](#)
- [Immunofluorescence](#)

- [Immunoprecipitation](#)
- [Flow Cytometry](#)
- [Cell Culture](#)

### Anti-AKT1 (MOUSE) Fluorescein Conjugated Monoclonal Antibody - Images



Western Blot of Mouse Anti-AKT1 Fluorescein Conjugated Antibody. Lane 1: Opal Prestained Molecular Weight Marker (p/n MB-210-0500). Lane 2: AKT1 Recombinant Protein (0.05  $\mu$ g). Lane 3: AKT2 Recombinant Protein (0.05  $\mu$ g). Lane 4: AKT3 Recombinant Protein (0.05  $\mu$ g). Lane 5: HEPG2 Whole Cell Lysate (20  $\mu$ g). Lane 6: C2C12 Whole Cell Lysate (20  $\mu$ g). Lane 7: A549 Whole Cell Lysate (20  $\mu$ g). Primary Antibody: Mouse Anti-AKT1 FITC at 1.0  $\mu$ g/mL overnight at 2-8°C. Secondary Antibody: Rabbit Anti-Mouse HRP (p/n 610-403-C46) at 1:40,000 for 30mins at RT. Blocking: Fluorescent Buffer (p/n MB-073) for 1hr at RT. Predicted MW: ~56kDa. Exposure: 0.5 sec.

### Anti-AKT1 (MOUSE) Fluorescein Conjugated Monoclonal Antibody - Background

AKT is a component of the PI-3 kinase pathway and is activated by phosphorylation at Ser 473 and Thr 308. AKT is a cytoplasmic protein also known as AKT1, Protein Kinase B (PKB) and rac (related to A and C kinases). AKT is a key regulator of many signal transduction pathways. AKT Exhibits tight control over cell proliferation and cell viability. Overexpression or inappropriate activation of AKT is noted in many types of cancer. AKT mediates many of the downstream events of PI 3-kinase (a lipid kinase activated by growth factors, cytokines and insulin). PI 3-kinase recruits AKT to the membrane, where it is activated by PDK1 phosphorylation. Once phosphorylated, AKT dissociates from the membrane and phosphorylates targets in the cytoplasm and the cell nucleus. AKT has two main roles: (i) inhibition of apoptosis; (ii) promotion of proliferation. Anti-AKT1 (MOUSE) PE conjugated Monoclonal Antibody is ideal for investigators involved in Cell Signaling, Cancer, Neuroscience, Signal Transduction research.