

Anti-GSTM1 (MOUSE) Monoclonal Antibody
GSTM1 Antibody
Catalog # ASR4228

Specification

Anti-GSTM1 (MOUSE) Monoclonal Antibody - Product Information

Host	Mouse
Conjugate	Unconjugated
Target Species	Mouse
Reactivity	Human
Clonality	Monoclonal
Application	WB, IHC, E, IP, I, LCI
Application Note	Anti-GSTM1 antibody has been tested by ELISA and Western Blot. Suitable for most immunological techniques requiring high titer binding and lot-to-lot consistency. Specific conditions for reactivity should be optimized by the end user.
Physical State	Liquid (sterile filtered)
Buffer	0.02 M Potassium Phosphate, 0.15 M Sodium Chloride, pH 7.2
Immunogen	This Protein A purified antibody was prepared by repeated immunizations in mice with M1 Protein
Preservative	0.01% (w/v) Sodium Azide

Anti-GSTM1 (MOUSE) Monoclonal Antibody - Additional Information

Gene ID 2944

Purity

This product is purified from roller bottle culture by Protein A chromatography followed by extensive dialysis against the buffer stated above. Reacts specifically with M1 protein. Cross reactivity from other sources has not been determined.

Storage Condition

Store vial at -20° C prior to opening. Aliquot contents and freeze at -20° C or below for extended storage. Avoid cycles of freezing and thawing. Centrifuge product if not completely clear after standing at room temperature. This product is stable for several weeks at 4° C as an undiluted liquid. Dilute only prior to immediate use.

Precautions Note

This product is for research use only and is not intended for therapeutic or diagnostic applications.

Anti-GSTM1 (MOUSE) Monoclonal Antibody - Protein Information

Name GSTM1 ([HGNC:4632](#))

Synonyms GST1

Function

Conjugation of reduced glutathione to a wide number of exogenous and endogenous hydrophobic electrophiles. Involved in the formation of glutathione conjugates of both prostaglandin A2 (PGA2) and prostaglandin J2 (PGJ2) (PubMed:9084911). Participates in the formation of novel hepoxilin regioisomers (PubMed:21046276).

Cellular Location

Cytoplasm.

Tissue Location

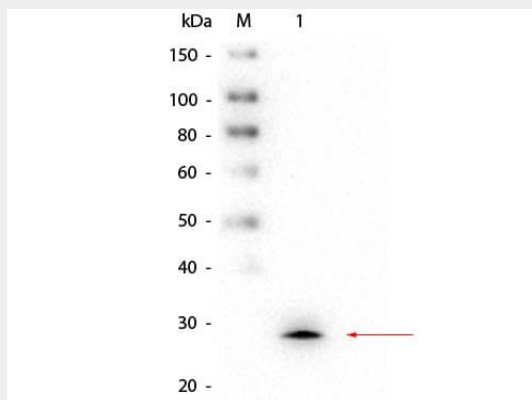
Liver (at protein level).

Anti-GSTM1 (MOUSE) Monoclonal Antibody - Protocols

Provided below are standard protocols that you may find useful for product applications.

- [Western Blot](#)
- [Blocking Peptides](#)
- [Dot Blot](#)
- [Immunohistochemistry](#)
- [Immunofluorescence](#)
- [Immunoprecipitation](#)
- [Flow Cytometry](#)
- [Cell Culture](#)

Anti-GSTM1 (MOUSE) Monoclonal Antibody - Images



Western Blot of Mouse anti-GSTM1 Monoclonal Antibody. Lane 1: rGSTM1 protein. Lane 2: GST (p/n 000-001-200). Load: 50 ng per lane. Primary antibody: Mouse anti-GSTM1 Monoclonal Antibody at 1:1,000 overnight at 4°C. Secondary antibody: Peroxidase conjugated Rb-a-Ms IgG (p/n 610-403-C46) at 1:40,000 for 30 min at RT. Block: (p/n MB-070) for 30 min at RT. Predicted/Observed size: 27 kDa, 27 kDa for GSTM1.

Anti-GSTM1 (MOUSE) Monoclonal Antibody - Background

Rockland produces a wide range of human GST antibodies in our laboratories. Select appropriate GST antibodies for your research by isotype, epitope, applications and species reactivity. There are 22 members of the human GST family of proteins. GST is responsible for the conjugation of reduced

glutathione to a wide number of exogenous and endogenous hydrophobic electrophiles. The amino acid sequence GST is highly conserved in most organisms including mammals. GSTs proteins are typically homodimeric, with both heterologous GST dimers have been observed. GST monomers have an average molecular weight of approximately 25-28 kDa in size. Note a different form of non-human GST (Glutathione-S-Transferase) is used as a protein expression tag commonly in molecular biology applications. All anti-GST antibodies may not react with recombinant GST-fusion proteins.