

Anti-BIN3 (MOUSE) Monoclonal Antibody
BIN3 Antibody
Catalog # ASR4213

Specification

Anti-BIN3 (MOUSE) Monoclonal Antibody - Product Information

| | |
|------------------|--|
| Host | Mouse |
| Conjugate | Unconjugated |
| Target Species | Human |
| Reactivity | Mouse |
| Clonality | Monoclonal |
| Application | WB, E, IP, I, LCI |
| Application Note | Anti-BIN3 antibody has been tested for use in ELISA, Western Blot, and IP. Specific conditions for reactivity should be optimized by the end user. |
| Physical State | Liquid (sterile filtered) |
| Buffer | 0.02 M Potassium Phosphate, 0.15 M Sodium Chloride, pH 7.2 |
| Immunogen | Anti-BIN3 (MOUSE) Monoclonal Antibody was produced in mouse by repeated immunizations with a full length human BIN3 recombinant protein followed by hybridoma development. |
| Preservative | 0.01% (w/v) Sodium Azide |

Anti-BIN3 (MOUSE) Monoclonal Antibody - Additional Information

Gene ID 55909

Other Names
55909

Purity

Anti-BIN3 was purified from clarified mouse ascetic fluid by Protein A chromatography followed by extensive dialysis against the buffer stated above. BIN3 antibody is specific for human BIN3 protein. A BLAST analysis was used to suggest cross-reactivity with BIN3 from human and mouse sources based on 100% homology with the immunizing sequence. Cross-reactivity with BIN3 from other sources has not been determined.

Storage Condition

Store vial at -20° C prior to opening. Aliquot contents and freeze at -20° C or below for extended storage. Avoid cycles of freezing and thawing. Centrifuge product if not completely clear after standing at room temperature. This product is stable for several weeks at 4° C as an undiluted liquid. Dilute only prior to immediate use.

Precautions Note

This product is for research use only and is not intended for therapeutic or diagnostic applications.

Anti-BIN3 (MOUSE) Monoclonal Antibody - Protein Information

Name BIN3

Function

Involved in cytokinesis and septation where it has a role in the localization of F-actin.

Cellular Location

Cytoplasm, cytoskeleton.

Tissue Location

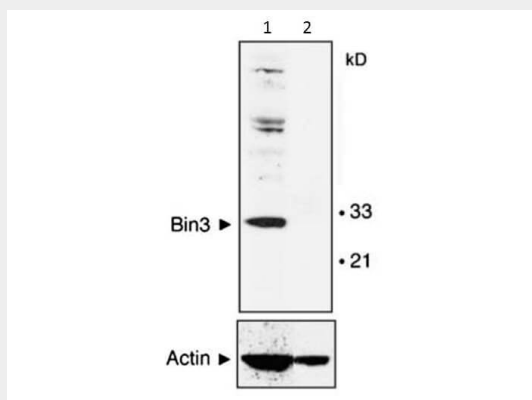
Ubiquitously expressed except in brain.

Anti-BIN3 (MOUSE) Monoclonal Antibody - Protocols

Provided below are standard protocols that you may find useful for product applications.

- [Western Blot](#)
- [Blocking Peptides](#)
- [Dot Blot](#)
- [Immunohistochemistry](#)
- [Immunofluorescence](#)
- [Immunoprecipitation](#)
- [Flow Cytometry](#)
- [Cell Culture](#)

Anti-BIN3 (MOUSE) Monoclonal Antibody - Images



Western Blot of Mouse Anti-BIN3 antibody. Lane 1: MEF cells wild type. Lane 2: MEF cells null mice. Load: 35 μ g per lane. Primary antibody: BIN3 antibody overnight at 4°C. Secondary antibody: IRDye800™ mouse secondary antibody for 45 min at RT. Block: 5% BLOTTO overnight at 4°C. Predicted/Observed size: 29.7 kDa, 30 kDa for BIN-3. Other band(s): non-specific.

Anti-BIN3 (MOUSE) Monoclonal Antibody - Background

BIN-3 encodes an evolutionarily conserved and ubiquitously expressed member of the BAR superfamily of curved membrane and GTPase-binding proteins implicated in signal transduction and vesicular trafficking. In humans, Bin3 maps to chromosome 8p21.3, a region widely implicated in cancer suppression that is often deleted in non-Hodgkin's lymphomas and various epithelial tumors. Study in mouse suggests that homozygous inactivation of Bin3 causes cataracts and an increased susceptibility to lymphomas during aging.