

**Anti-6X HIS EPITOPE TAG (MOUSE) Monoclonal Antibody**  
**6X His Epitope Tag Antibody**  
**Catalog # ASR4150****Specification****Anti-6X HIS EPITOPE TAG (MOUSE) Monoclonal Antibody - Product Information**

Host	<b>Mouse</b>
Conjugate	<b>Unconjugated</b>
Clonality	<b>Monoclonal</b>
Application	<b>WB, E, IP, I, LCI</b>
Application Note	<b>Anti-6X His is optimally suited for monitoring expression of His-tagged fusion proteins. As such, Anti-6X His/6XHIS can be used to identify fusion proteins that contain the 6X His epitope. The antibody recognizes the His tag fused either to the amino- or carboxy- termini of targeted proteins. This antibody has been tested by ELISA and western blotting against both the immunizing peptide and His-containing recombinant proteins. Although not tested, this antibody is likely functional for immunoprecipitation and immunocytochemistry.</b>
Physical State	<b>Liquid (sterile filtered)</b>
Buffer	<b>0.02 M Potassium Phosphate, 0.15 M Sodium Chloride, pH 7.2</b>
Immunogen	<b>HIS Tag antibody was produced in mice by repeated immunizations with 6X His epitope tag peptide H-H-H-H-H-H conjugated to KLH using maleimide.</b>
Preservative	<b>0.01% (w/v) Sodium Azide</b>

**Anti-6X HIS EPITOPE TAG (MOUSE) Monoclonal Antibody - Additional Information****Purity**

6X HIS Epitope Tag antibody was purified from concentrated tissue culture supernate by Protein A chromatography and is directed against the 6X His motif and is useful in determining its presence in various assays. This monoclonal anti-6X His tag antibody detects over-expressed proteins containing the 6X His epitope tag. To date, this antibody has reacted with all His tagged proteins so far tested. In western blotting of bacterial extracts, the antibody does not cross-react with endogenous proteins. The antibody recognizes the His-tag (His-His-His-His-His-His) fused to either the amino- or carboxy-termini of targeted proteins in transfected or transformed cells.

**Storage Condition**

Store 6X HIS Tag Antibody at -20° C prior to opening. Aliquot contents and freeze at -20° C or below for extended storage. Avoid cycles of freezing and thawing. Centrifuge product if not completely clear after standing at room temperature. Anti-6X HIS Tag is stable for several weeks at 4° C as an undiluted liquid. Dilute only prior to immediate use.

### Precautions Note

This product is for research use only and is not intended for therapeutic or diagnostic applications.

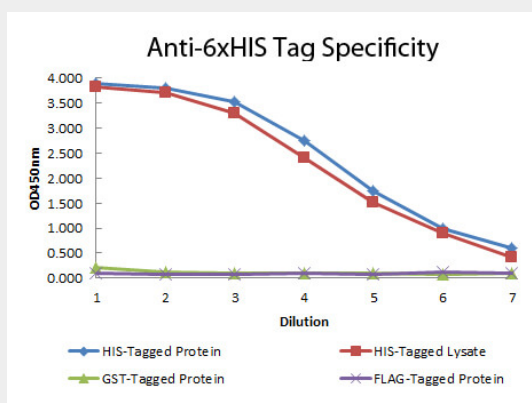
## Anti-6X HIS EPI TOPE TAG (MOUSE) Monoclonal Antibody - Protein Information

### Anti-6X HIS EPI TOPE TAG (MOUSE) Monoclonal Antibody - Protocols

Provided below are standard protocols that you may find useful for product applications.

- [Western Blot](#)
- [Blocking Peptides](#)
- [Dot Blot](#)
- [Immunohistochemistry](#)
- [Immunofluorescence](#)
- [Immunoprecipitation](#)
- [Flow Cytometry](#)
- [Cell Culture](#)

### Anti-6X HIS EPI TOPE TAG (MOUSE) Monoclonal Antibody - Images



ELISA of Mouse anti-6xHIS Tag Antibody. Antigen: HIS-tagged purified protein and E. coli cell lysates expressing HIS-Tagged construct, GST- and RON-tagged purified proteins. Coating amount: 0.15ug per well. Primary antibody: 6xHIS Tag antibody at 100ug/mL. Dilution series: 2-fold. Mid-point concentration: 200ng/mL. Secondary antibody: Peroxidase mouse secondary antibody at 1:10,000. Substrate: TMB (p/n TMBE-1000).

### Anti-6X HIS EPI TOPE TAG (MOUSE) Monoclonal Antibody - Background

6X His Tag Antibody as well as other Epitope tags are short peptide sequences that are easily recognized by tag-specific antibodies. Due to their small size, epitope tags do not affect the tagged protein's biochemical properties. Most often sequences encoding the epitope tag are included with target DNA at the time of cloning to produce fusion proteins containing the epitope tag sequence. This allows anti-epitope tag antibodies to serve as universal detection reagents for any tag containing protein produced by recombinant means. This means that anti-epitope tag antibodies are a useful alternative to generating specific antibodies to identify, immunoprecipitate or immunoaffinity purify a recombinant protein. The anti-epitope tag antibody is usually functional in a variety of antibody-dependent experimental procedures. Expression vectors producing epitope tag fusion proteins are available for a variety of host expression systems including bacteria, yeast, insect and mammalian cells. Rockland Immunochemicals produces anti-epitope tag antibodies

against many common epitope tags including Myc, GST, GFP, 6X His, MBP, FLAG and HA. Rockland Immunochemicals also produces antibodies to other tags including FITC, Rhodamine (TRITC), DNP and biotin.