

Anti-PAPAIN (GOAT) Antibody
Papain Antibody
Catalog # ASR4077**Specification**

Anti-PAPAIN (GOAT) Antibody - Product Information

Host	Goat
Conjugate	Unconjugated
Target Species	Carica papaya
Clonality	Polyclonal
Application	WB, IHC, E, I, LCI
Application Note	Anti-Papain antibody has been tested by western blotting to detect a single band of the expected apparent molecular weight and for ELISA. Researchers should determine optimal titers for applications that are not stated below.
Physical State	Lyophilized
Buffer	0.02 M Potassium Phosphate, 0.15 M Sodium Chloride, pH 7.2
Immunogen	Anti-Papain antibody was produced by repeated immunizations with pork Papain protein isolated from papaya.
Reconstitution Volume	100 µL
Reconstitution Buffer	Restore with deionized water (or equivalent)
Preservative	0.01% (w/v) Sodium Azide

Anti-PAPAIN (GOAT) Antibody - Additional Information**Purity**

Anti-Papain antibody is an IgG fraction antibody purified from monospecific antiserum by a multi-step process which includes delipidation, salt fractionation and ion exchange chromatography followed by extensive dialysis against the buffer stated above. Assay by immunoelectrophoresis resulted in a single precipitin arc against anti-Goat Serum as well as purified and partially purified Papain [Carica papaya]. Cross reactivity against Papain from other sources may occur but has not been specifically determined.

Storage Condition

Store vial at 4° C prior to restoration. For extended storage aliquot contents and freeze at -20° C or below. Avoid cycles of freezing and thawing. Centrifuge product if not completely clear after standing at room temperature. This product is stable for several weeks at 4° C as an undiluted liquid. Dilute only prior to immediate use.

Precautions Note

This product is for research use only and is not intended for therapeutic or diagnostic applications.

Anti-PAPAIN (GOAT) Antibody - Protein Information

Name PAPA1

Function

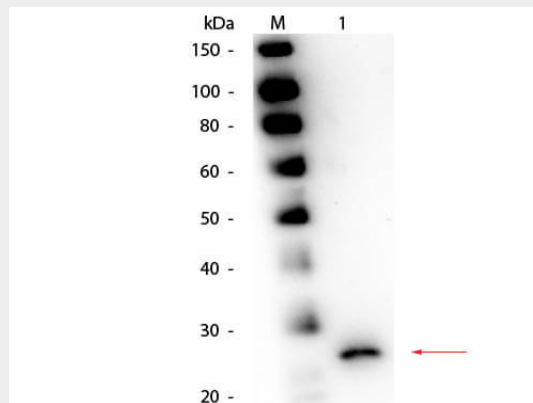
Cysteine proteinase with a high level of diversity in substrate specificity, an amino acid bearing a large hydrophobic side chain at the P2 position is preferred.

Anti-PAPAIN (GOAT) Antibody - Protocols

Provided below are standard protocols that you may find useful for product applications.

- [Western Blot](#)
- [Blocking Peptides](#)
- [Dot Blot](#)
- [Immunohistochemistry](#)
- [Immunofluorescence](#)
- [Immunoprecipitation](#)
- [Flow Cytometry](#)
- [Cell Culture](#)

Anti-PAPAIN (GOAT) Antibody - Images



Western Blot of Goat anti-Papain Antibody. Lane 1: Papain. Load: 50 ng per lane. Primary antibody: Goat anti-Papain Antibody at 1:1,000 overnight at 4°C. Secondary antibody: HRP goat secondary antibody at 1:40,000 for 30 min at RT. Block: MB-070 for 30 min at RT. Predicted/Observed size: 23 kDa, 23 kDa for Papain.

Anti-PAPAIN (GOAT) Antibody - Background

Papain Antibody detects Papain protein from papaya. Papain belongs to the peptidase C1 family and hydrolyses proteins with broad specificity for peptide bonds. The proteolysis preference of Papain is at amino acids bearing a large hydrophobic side chain at the P2 position and is inhibited when Val is at position P1. Papain may cause allergic reactions in humans. Anti-Papain Antibody is ideal for investigators involved in Cell Signaling and Cell Biology research.