

Anti-GLYCEROL KINASE (Cellulomonas species) (GOAT) Antibody Biotin Conjugated
Glycerol Kinase Antibody Biotin Conjugated
Catalog # ASR4037

Specification

**Anti-GLYCEROL KINASE (Cellulomonas species) (GOAT) Antibody Biotin Conjugated -
Product Information**

Host	Goat
Conjugate	Biotin
Target Species	Cellulomonas
Clonality	Polyclonal
Application	WB, E, I, LCI
Application Note	Anti-Glycerol Kinase has been tested by ELISA and western blot. This product is assayed against 1.0 ug of Glycerol Kinase in a standard capture ELISA using Peroxidase Conjugated Streptavidin #S000-03 and ABTS (2,2'-azino-bis-[3-ethyl benthiazoline-6-sulfonic acid]) code # ABTS-100 as a substrate for 30 minutes at room temperature. A working dilution of 1:4,000 to 1:20,000 of the reconstitution concentration is suggested for this product.
Physical State	Lyophilized
Buffer	0.02 M Potassium Phosphate, 0.15 M Sodium Chloride, pH 7.2
Immunogen	Glycerol Kinase [Cellulomonas species]
Reconstitution Volume	100 µL
Reconstitution Buffer	Restore with deionized water (or equivalent)
Stabilizer	10 mg/mL Bovine Serum Albumin (BSA) - Immunoglobulin and Protease free
Preservative	0.01% (w/v) Sodium Azide

**Anti-GLYCEROL KINASE (Cellulomonas species) (GOAT) Antibody Biotin Conjugated -
Additional Information**

Other Names
6960048

Purity

Anti-Glycerol Kinase is an IgG fraction antibody purified from monospecific antiserum by a multi-step process which includes delipidation, salt fractionation and ion exchange chromatography followed by extensive dialysis against the buffer stated above. Assay by immunoelectrophoresis resulted in a single precipitin arc against anti-Biotin, anti-Goat Serum as well as purified and partially purified Glycerol Kinase [Cellulomonas species]. Cross reactivity against Glycerol Kinase from other sources is unknown.

Storage Condition

Store vial at 4° C prior to restoration. For extended storage aliquot contents and freeze at -20° C or below. Avoid cycles of freezing and thawing. Centrifuge product if not completely clear after standing at room temperature. This product is stable for several weeks at 4° C as an undiluted liquid. Dilute only prior to immediate use.

Precautions Note

This product is for research use only and is not intended for therapeutic or diagnostic applications.

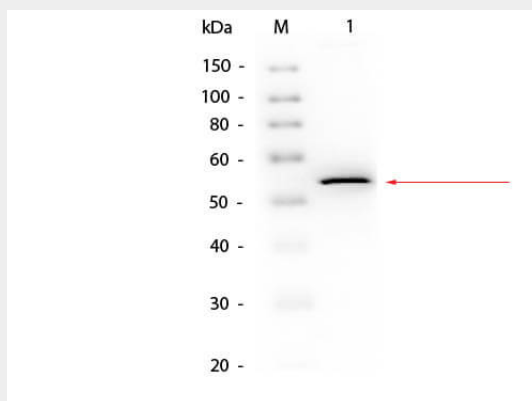
Anti-GLYCEROL KINASE (Cellulomonas species) (GOAT) Antibody Biotin Conjugated - Protein Information

Anti-GLYCEROL KINASE (Cellulomonas species) (GOAT) Antibody Biotin Conjugated - Protocols

Provided below are standard protocols that you may find useful for product applications.

- [Western Blot](#)
- [Blocking Peptides](#)
- [Dot Blot](#)
- [Immunohistochemistry](#)
- [Immunofluorescence](#)
- [Immunoprecipitation](#)
- [Flow Cytometry](#)
- [Cell Culture](#)

Anti-GLYCEROL KINASE (Cellulomonas species) (GOAT) Antibody Biotin Conjugated - Images



Western Blot of Goat anti-Glycerol Kinase Antibody Biotin Conjugated. Lane 1: Glycerol Kinase. Load: 50 ng per lane. Primary antibody: Glycerol Kinase Antibody Biotin Conjugated at 1:1000 overnight at 4°C. Secondary antibody: HRP Streptavidin (p/n S000-03) secondary antibody at 1:40,000 for 30 min at RT. Block: MB-070 for 30 min at RT. Predicted/Observed size: 55 kDa, 55 kDa for Glycerol Kinase.

Anti-GLYCEROL KINASE (Cellulomonas species) (GOAT) Antibody Biotin Conjugated - Background

Anti-Glycerol Kinase antibody recognizes the phosphotransferase enzyme glycerol kinase. Glycerol kinase catalyzes the formation of glycerol phosphate by transferring a phosphate from ATP to

glycerol. Dihydroxyacetone and L-glyceraldehyde can also act as acceptors in place of glycerol. Anti-Glycerol Kinase is ideal for investigators interested in Cancer, Metabolism, and Kinase/Phosphatase enzymology.