

Anti-LUCIFERASE (GOAT) Antibody
Luciferase Antibody
Catalog # ASR3953**Specification**

Anti-LUCIFERASE (GOAT) Antibody - Product Information

Host	Goat
Conjugate	Unconjugated
Clonality	Polyclonal
Application	WB, IHC, E, I, LCI
Application Note	Anti-Luciferase Antibody has been tested in Western Blot, IHC, IF, and ELISA. Expect a band ~60kDa in appropriate cell lysates. Although not tested, this antibody would be useful in immunoprecipitation, immunocytochemistry, and most immunological methods requiring high titers and specificity.
Physical State	Liquid (sterile filtered)
Buffer	0.02 M Potassium Phosphate, 0.15 M Sodium Chloride, pH 7.2
Immunogen	Luciferase [Photinus pyralis (Firefly)]
Preservative	0.01% (w/v) Sodium Azide

Anti-LUCIFERASE (GOAT) Antibody - Additional Information**Purity**

This product is an IgG fraction antibody purified from monospecific antiserum by a multi-step process which includes delipidation, salt fractionation and ion exchange chromatography followed by extensive dialysis against the buffer stated above. Assay by immunoelectrophoresis resulted in a single precipitin arc against anti-Goat Serum as well as purified and partially purified Luciferase [Photinus pyralis (Firefly)]. No reactivity is observed against Sea pansy (Renilla reniformis) luciferase.

Storage Condition

Store vial at -20° C prior to opening. Aliquot contents and freeze at -20° C or below for extended storage. Avoid cycles of freezing and thawing. Centrifuge product if not completely clear after standing at room temperature. This product is stable for several weeks at 4° C as an undiluted liquid. Dilute only prior to immediate use.

Precautions Note

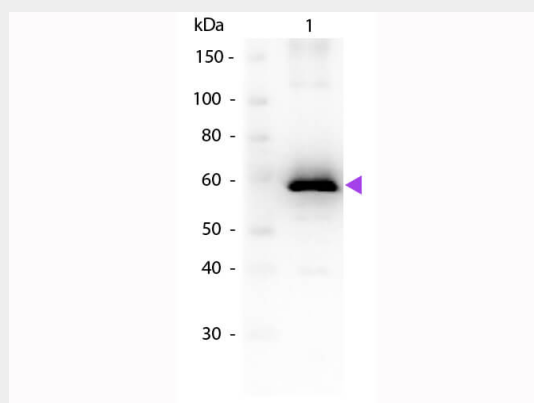
This product is for research use only and is not intended for therapeutic or diagnostic applications.

Anti-LUCIFERASE (GOAT) Antibody - Protein Information**Anti-LUCIFERASE (GOAT) Antibody - Protocols**

Provided below are standard protocols that you may find useful for product applications.

- [Western Blot](#)
- [Blocking Peptides](#)
- [Dot Blot](#)
- [Immunohistochemistry](#)
- [Immunofluorescence](#)
- [Immunoprecipitation](#)
- [Flow Cytometry](#)
- [Cell Culture](#)

Anti-LUCIFERASE (GOAT) Antibody - Images



Western Blot of Goat anti-Luciferase Antibody. Lane 1: Luciferase. Load: 50ng per lane. Primary antibody: Luciferase antibody at 1:1000 overnight at 4°C. Secondary antibody: Peroxidase goat secondary antibody (p/n 611-103-122) at 1:40,000 for 30 min at RT. Block: (p/n MB-070) for 30 min at RT. Predicted/Observed size: ~60 kDa for Luciferase. Other band(s): None.

Anti-LUCIFERASE (GOAT) Antibody - Background

Anti luciferase Antibody recognizes luciferase that is commonly used in biological research as a reporter to assess the transcriptional activity in cells that are transfected with a genetic construct containing the luciferase gene under the control of a promoter of interest. Luciferase can also be used to detect the level of cellular ATP in cell viability assays or for kinase activity assays. Additionally proluminescent molecules that are converted to luciferin upon activity of a particular enzyme can be used to detect enzyme activity in coupled or two-step luciferase assays. Such substrates have been used to detect caspase activity and cytochrome P450 activity, among others.