

Anti-RFP (GOAT) Antibody
RFP Antibody
Catalog # ASR3950**Specification**

Anti-RFP (GOAT) Antibody - Product Information

Host	Goat
Conjugate	Unconjugated
Clonality	Polyclonal
Application	WB, E, I, LCI
Application Note	Polyclonal anti-RFP has been tested by and western blot and is designed to detect RFP and its variants. Optimal titers for applications should be determined by the researcher. Expect a band ~27kDa in Western Blot in the appropriate cell lysate or extract.
Physical State	Liquid (sterile filtered)
Buffer	0.02 M Potassium Phosphate, 0.15 M Sodium Chloride, pH 7.2
Immunogen	The immunogen is a Red Fluorescent Protein (RFP) fusion protein corresponding to the full length amino acid sequence (234aa) derived from the mushroom polyp coral <i>Discosoma</i> .
Preservative	0.01% (w/v) Sodium Azide

Anti-RFP (GOAT) Antibody - Additional Information**Purity**

Anti-RFP (GOAT) is an IgG fraction purified from monospecific antiserum by a multi-step process which includes delipidation, salt fractionation and ion exchange chromatography followed by extensive dialysis against the buffer stated above. Assay by immunoelectrophoresis resulted in a single precipitin arc against anti-Goat Serum and purified and partially purified Red Fluorescent Protein (*Discosoma*). No reaction was observed against Human, Mouse or Rat serum proteins. Expect reactivity against RFP and its variants: mCherry, tdTomato, mBanana, mOrange, mPlum, mOrange and mStrawberry.

Storage Condition

Store vial at -20° C prior to opening. Aliquot contents and freeze at -20° C or below for extended storage. Avoid cycles of freezing and thawing. Centrifuge product if not completely clear after standing at room temperature. This product is stable for several weeks at 4° C as an undiluted liquid. Dilute only prior to immediate use.

Precautions Note

This product is for research use only and is not intended for therapeutic or diagnostic applications.

Anti-RFP (GOAT) Antibody - Protein Information

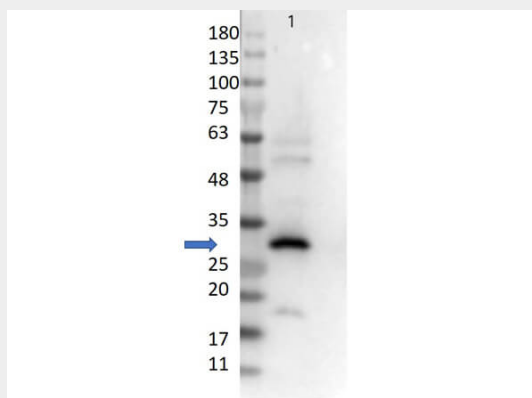
Name RFP**Function**

Thought to play a role in photoprotection of the coral's resident symbiont microalgae's photosystems from photoinhibition caused by high light levels found near the surface of coral reefs. In deeper water, the fluorescence may be to convert blue light into longer wavelengths more suitable for use in photosynthesis by the microalgal symbionts.

Anti-RFP (GOAT) Antibody - Protocols

Provided below are standard protocols that you may find useful for product applications.

- [Western Blot](#)
- [Blocking Peptides](#)
- [Dot Blot](#)
- [Immunohistochemistry](#)
- [Immunofluorescence](#)
- [Immunoprecipitation](#)
- [Flow Cytometry](#)
- [Cell Culture](#)

Anti-RFP (GOAT) Antibody - Images

Western Blot of Goat Anti-RFP Antibody. Lane 1: 50ng of RFP protein (p/n 000-001-379). Primary Antibody: Goat Anti-RFP at 1:10,000 overnight at 2-8°C. Secondary Antibody: Donkey anti-Goat IgG HRP (p/n 605-703-125) at 1:40,000 for 30 min at RT. Blocking buffer: BlockOut® (p/n MB-073). Predicted MW: ~27kDa.

Anti-RFP (GOAT) Antibody - Background

Antibodies to RFP (Discosoma spp.) are intended for use in immunological assays including ELISA, western blotting, immunofluorescence, and fluorescence activated cell sorting (FACS).